

HLA-A (MHC I) Antibody

Mouse Monoclonal Antibody [Clone 108-2C5]

Catalog No	Format	Size
3105-MSM3-P0	Purified Ab with BSA and Azide at 200ug/ml	20 ug
3105-MSM3-P1	Purified Ab with BSA and Azide at 200ug/ml	100 ug
3105-MSM3-P1ABX	Purified Ab WITHOUT BSA and Azide at 1.0mg/ml	100 ug

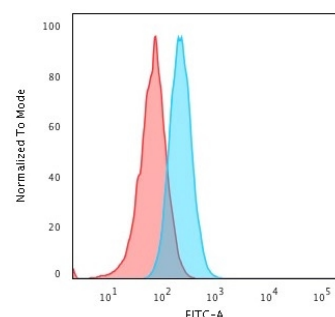
Applications	Tested Dillution	Note
Flow Cytometry (Flow)	1-2ug/million cells	
Immunofluorescence (IF)	1-3ug/ml	

Product Details

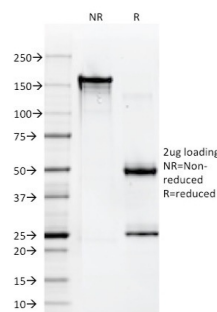
Clone	108-2C5
Gene Name	HLA-B
Immunogen	Normal human peripheral blood lymphocytes
Host	Mouse
Clonality	Monoclonal
Isotype / Light Chain	IgG1 / Kappa
Mol. Weight of Antigen	~41kDa
Cellular Localization	Cell membrane, Endoplasmic reticulum membrane
Species Reactivity	Human
Positive Control	Raji, THP-1 and Jurkat cells. Tonsil or lymph node.

**Optimal dilution for a specific application should be determined.*

Product Images for HLA-A (MHC I) Antibody



Flow Cytometric Analysis of Raji cells. HLA-A Mouse Monoclonal Antibody (108-2C5) followed by goat anti-Mouse IgG-CF488 (Blue); Isotype control (Red).



SDS-PAGE Analysis of Purified HLA-A Mouse Monoclonal Antibody (108-2C5). Confirmation of Purity and Integrity of Antibody.

Specificity & Comments

HLA-A, with HLA-B and HLA-C, belongs to major histocompatibility complex (MHC) class I antigens and expresses constitutively on all nucleated cells. MHC class I antigens play a role in class I MHC-associated antigen presentation, inhibition of NK cell cytotoxicity, tumor surveillance, and tissue allotransplantation. This MAb is useful for HLA molecular typing of peripheral blood leukocytes as well as a large number of leukemic cell lines. It reacts with an intralocus determinant present on a limited number of HLA-A locus-encoded gene products (HLA-A2, -A3, -A28, -A29, -A30, -A31 and -Aw33). Its epitope maps between aa65-to-aa80 of the 1 domain of the HLA-A. This MAb recognizes an intralocus determinant present on a limited number of HLA-A locus-encoded gene products (HLA-A2, -A3, A28, -A29, -A30, -A31 and -Aw33). Furthermore, by testing its reactivity with HLA-A2 natural variants and mutants, the importance of amino acid residues 79 and/or 80 of the alpha1 domain was demonstrated in the formation of an intralocus HLA-A determinant.

Limitations and Warranty

This antibody is available for research use only and is not approved for use in diagnosis. There are no warranties, expressed or implied, which extend beyond this description. Company is not liable for any personal injury or economic loss resulting from this product.

Supplied As

200ug/ml of Ab Purified from Bioreactor Concentrate. Prepared in 10mM PBS with 0.05% BSA & 0.05% azide. Also available WITHOUT BSA & azide at 1.0mg/ml.

Storage and Stability

Antibody with azide - store at 2 to 8°C. Antibody without azide - store at -20 to -80°C. Antibody is stable for 24 months. Non-hazardous. No MSDS required.

Research Areas

Cytokine Signaling, Dendritic Cell Marker, Immunology, Infectious Disease, Mesenchymal Stem Cell Differentiation