

Annexin A1 / (Hairy Cell Leukemia Marker) Antibody

Mouse Monoclonal Antibody [Clone ANXA1/3566]

Catalog No	Format	Size
301-MSM6-P0	Purified Ab with BSA and Azide at 200ug/ml	20 ug
301-MSM6-P1	Purified Ab with BSA and Azide at 200ug/ml	100 ug
301-MSM6-P1ABX	Purified Ab WITHOUT BSA and Azide at 1.0mg/ml	100 ug

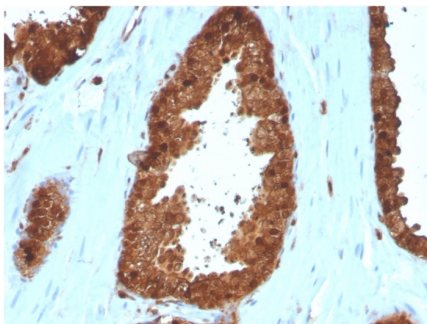
Applications	Tested Dillution	Note
Flow Cytometry (Flow)	1-2ug/million cells	
Immunofluorescence (IF)	1-3ug/ml	
Immunohistochemistry (IHC)	1-2ug/ml	30 min at RT. Staining of formalin-fixed tissues requires heating tissue sections in 10mM Tris with 1mM EDTA, pH 9.0, for 45 min at 95°C followed by cooling at RT for 20 minutes
Western Blot (WB)	2-4ug/ml	

Product Details

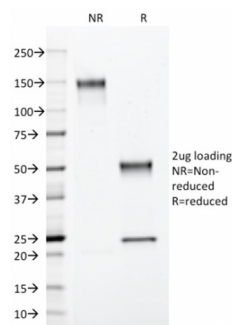
Clone	ANXA1/3566
Gene Name	ANXA1
Immunogen	Recombinant full-length human Annexin A1 protein
Host	Mouse
Clonality	Monoclonal
Isotype / Light Chain	IgG2a / Kappa
Mol. Weight of Antigen	38kDa
Cellular Localization	Apical cell membrane, Basolateral cell membrane, Cell membrane, Cell projection, Cilium, Cytoplasm, Cytoplasmic vesicle, Cytoplasmic vesicle membrane, Early endosome, Endosome membrane, Extracellular exosome, Extracellular space, Lateral cell membrane, Membrane, Nucleus, Phagocytic cup, Secreted, Secretory vesicle lumen
Species Reactivity	Human
Positive Control	A431 and K562 cell lysates, A549, HeLa, human esophagus, placenta and prostate tissues.

*Optimal dilution for a specific application should be determined.

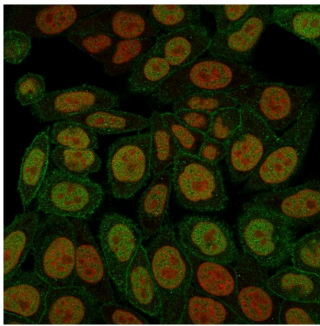
Product Images for Annexin A1 / (Hairy Cell Leukemia Marker) Antibody



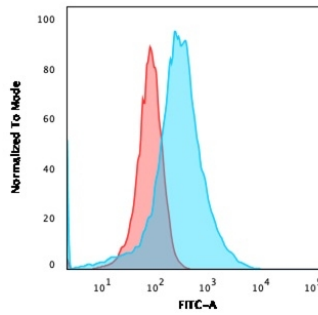
Formalin-fixed, paraffin-embedded human Prostate Carcinoma stained with Annexin A1 Mouse Monoclonal Antibody (ANXA1/3566).



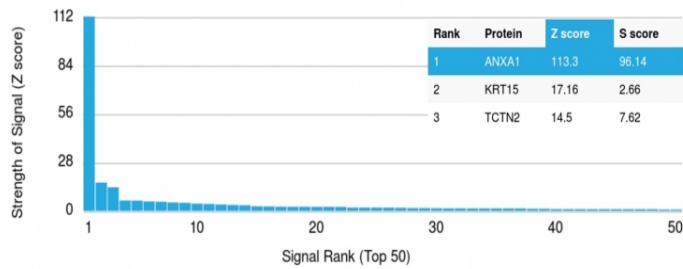
SDS-PAGE Analysis Purified Annexin A1 Mouse Monoclonal Antibody (ANXA1/3566). Confirmation of Purity and Integrity of Antibody.



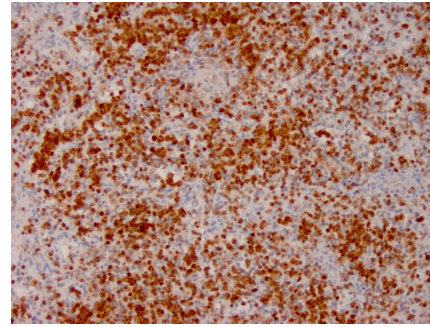
Immunofluorescence staining of paraformaldehyde-fixed HeLa cells with Annexin A1 Mouse Monoclonal Antibody (ANXA1/3566) followed by goat anti-Mouse IgG-CF488 (Green). Nuclei are labeled with Reddot (Red).



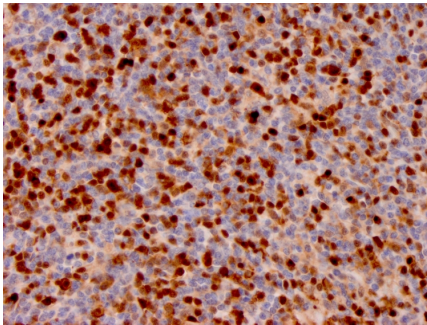
Flow Cytometric Analysis of PFA-fixed HeLa cells using Annexin A1 Mouse Monoclonal Antibody (ANXA1/3566) followed by goat anti-Mouse IgG-CF488 (Blue); Isotype Control (Red).



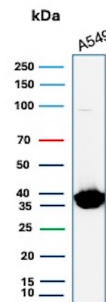
Analysis of Protein Array containing more than 19,000 full-length human proteins using Annexin A1 Mouse Monoclonal Antibody (ANXA1/3566). Z- and S- Score: The Z-score represents the strength of a signal that a monoclonal antibody (MAb) (in combination with a fluorescently-tagged anti-IgG secondary antibody) produces when binding to a particular protein on the HuProt™ array. Z-scores are described in units of standard deviations (SD's) above the mean value of all signals generated on that array. If targets on HuProt™ are arranged in descending order of the Z-score, the S-score is the difference (also in units of SD's) between the Z-score. S-score therefore represents the relative target specificity of a MAb to its intended target. A MAb is considered to be specific to its intended target, if the MAb has an S-score of at least 2.5. For example, if a MAb binds to protein X with a Z-score of 43 and to protein Y with a Z-score of 14, then the S-score for the binding of that MAb to protein X is equal to 29.



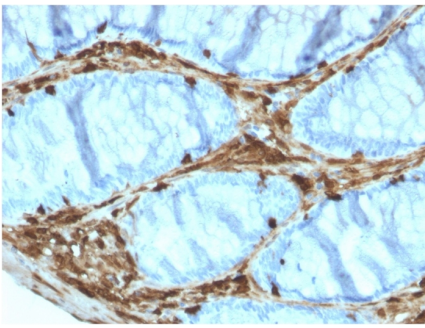
Formalin-fixed, paraffin-embedded human Lymph Node stained with Annexin A1 Mouse Monoclonal Antibody (ANXA1/3566).



Formalin-fixed, paraffin-embedded human Lymph Node stained with Annexin A1 Mouse Monoclonal Antibody (ANXA1/3566).



Western blot analysis of A549 lysate using Annexin A1 Mouse Monoclonal Antibody (ANXA1/3566).



Formalin-fixed, paraffin-embedded human Colon Carcinoma stained with Annexin A1 Mouse Monoclonal Antibody (ANXA1/3566).

Specificity & Comments

The ANXA1 gene belongs to the annexin family, and contains 4 annexin repeats. A pair of annexin repeats may form one binding site for calcium and a phospholipid. ANXA1 promotes membrane fusion and is involved in exocytosis. The gene for ANXA1 is upregulated in hairy cell leukemia (HCL), and its protein expression is specific for HCL. Detection of ANXA1 provides a simple, highly sensitive and specific assay for diagnosing HCL. Annexin A1 has also been found to be protective against DNA damage induced by heat in breast cancer cells, suggesting it is involved in tumor suppressive and protective activities, and also is associated with treatment resistance.

Limitations and Warranty

This antibody is available for research use only and is not approved for use in diagnosis. There are no warranties, expressed or implied, which extend beyond this description. Company is not liable for any personal injury or economic loss resulting from this product.

Supplied As

200ug/ml of Ab Purified from Bioreactor Concentrate by Protein A/G. Prepared in 10mM PBS with 0.05% BSA & 0.05% azide. Also available WITHOUT BSA & azide at 1.0mg/ml.

Storage and Stability

Antibody with azide - store at 2 to 8°C. Antibody without azide - store at -20 to -80°C. Antibody is stable for 24 months. Non-hazardous. No MSDS required.

Research Areas

Cardiovascular, Cytokine Signaling, Dendritic Cell Marker, Immunology, Signal Transduction
