

Recombinant Annexin A1 / (Hairy Cell Leukemia Marker) Antibody

Mouse Monoclonal Antibody [Clone CPTC-ANXA1-1]

Catalog No	Format	Size
301-MSM3-P0	Purified Ab with BSA and Azide at 200ug/ml	20 ug
301-MSM3-P1	Purified Ab with BSA and Azide at 200ug/ml	100 ug
301-MSM3-P1ABX	Purified Ab WITHOUT BSA or Azide at 1.0mg/ml	100 ug

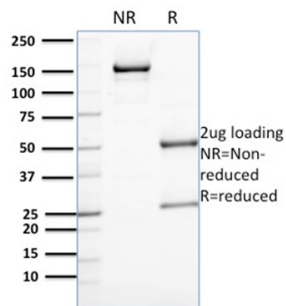
Applications	Tested Dillution	Note
--------------	------------------	------

Product Details

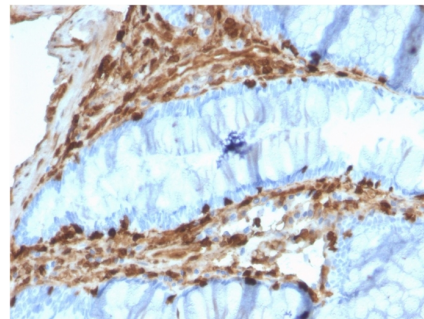
Clone	CPTC-ANXA1-1
Immunogen	Recombinant full-length human Annexin A1 protein
Host	Mouse
Clonality	Monoclonal
Isotype / Light Chain	IgG2a / Kappa
Mol. Weight of Antigen	38.71kDa
Cellular Localization	Apical cell membrane, Basolateral cell membrane, Cell membrane, Cell projection, Cilium, Cytoplasm, Cytoplasmic vesicle, Cytoplasmic vesicle membrane, Early endosome, Endosome membrane, Extracellular exosome, Extracellular space, Lateral cell membrane, Membrane, Nucleus, Phagocytic cup, Secreted, Secretory vesicle lumen
Species Reactivity	Hamster, Human, Mouse, Rabbit, Rat
Positive Control	A431 and K562 cell lysates, A549, human esophagus, Human Intestine, Lung, placenta and prostate tissues.

*Optimal dilution for a specific application should be determined.

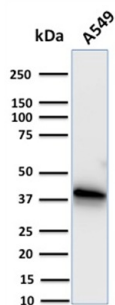
Product Images for Recombinant Annexin A1 / (Hairy Cell Leukemia Marker) Antibody



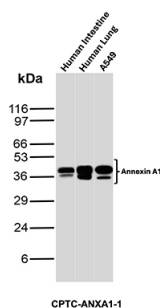
SDS-PAGE Analysis of Purified Annexin A1 Mouse Monoclonal Antibody (CPTC-ANXA1-1). Confirmation of Purity and Integrity of Antibody.



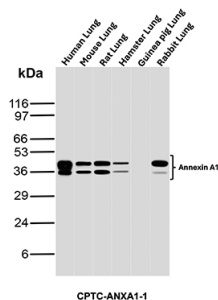
Formalin-fixed, paraffin-embedded human Colon Carcinoma stained with Annexin A1 Mouse Monoclonal Antibody (CPTC-ANXA1-1).



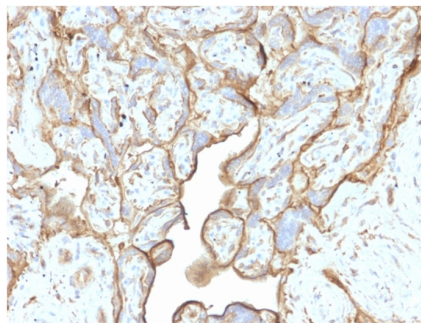
Western Blot Analysis of human A549 cell lysate using Annexin A1 Mouse Monoclonal Antibody (CPTC-ANXA1-1).



Western Blot Analysis of Human Intestine, Human Lung and A549 lysates using Annexin A1 Mouse Monoclonal Antibody (CPTC-ANXA1-1).



Western Blot Analysis of Human Lung, Mouse Lung, Rat Lung, Hamster Lung, Guinea pig Lung and Rabbit Lung tissue lysates using Annexin A1 Mouse Monoclonal Antibody (CPTC-ANXA1-1).



Formalin-fixed, paraffin-embedded human Placenta stained with Annexin A1 Mouse Monoclonal Antibody (CPTC-ANXA1-1).

Specificity & Comments

The ANXA1 gene belongs to the annexin family, and contains 4 annexin repeats. A pair of annexin repeats may form one binding site for calcium and a phospholipid. ANXA1 promotes membrane fusion and is involved in exocytosis. The gene for ANXA1 is upregulated in hairy cell leukemia (HCL), and its protein expression is specific for HCL. Detection of ANXA1 provides a simple, highly sensitive and specific assay for diagnosing HCL. Annexin A1 has also been found to be protective against DNA damage induced by heat in breast cancer cells, suggesting it is involved in tumor suppressive and protective activities, and also is associated with treatment resistance.

Supplied As

200ug/ml of Ab purified from Bioreactor Concentrate by Protein A. Prepared in 10mM PBS with 0.05% BSA & 0.05% azide. Also available WITHOUT BSA & azide at 1.0mg/ml.

Storage and Stability

Antibody with azide - store at 2 to 8 °C. Antibody without azide - store at -20 to -80 °C. Antibody is stable for 24 months. Non-hazardous. No MSDS required.

Limitations and Warranty

This antibody is available for research use only and is not approved for use in diagnosis. There are no warranties, expressed or implied, which extend beyond this description. Company is not liable for any personal injury or economic loss resulting from this product.