

## Recombinant Granzyme B (NK/T-Cell Lymphoma Marker) Antibody

Rabbit Monoclonal Antibody [Clone GZMB/6530R]

Catalog No	Format	Size
3002-RBM10-P0	Purified Ab with BSA and Azide at 200ug/ml	20 ug
3002-RBM10-P1	Purified Ab with BSA and Azide at 200ug/ml	100 ug
3002-RBM10-P1ABX	Purified Ab WITHOUT BSA and Azide at 1.0mg/ml	100 ug

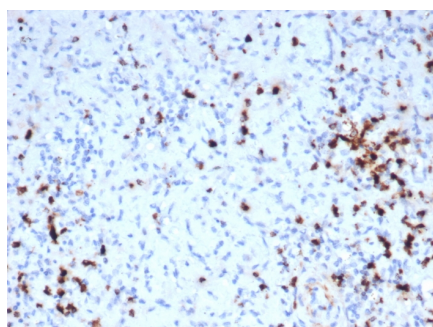
Applications	Tested Dillution	Note
Immunohistochemistry (IHC)	1-2ug/ml	30 min at RT. Staining of formalin-fixed tissues requires heating tissue sections in 10mM Tris with 1mM EDTA, pH 9.0, for 45 min at 95°C followed by cooling at RT for 20 minutes
Western Blot (WB)	2-4ug/ml	

### Product Details

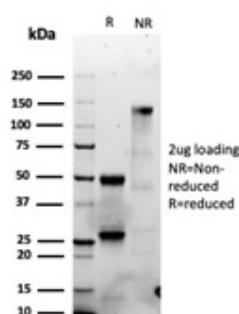
Clone	GZMB/6530R
Gene Name	GZMB
Immunogen	Recombinant fragment of human GZMB protein (around aa 73-187) (exact sequence is proprietary)
Host	Rabbit
Clonality	Monoclonal
Isotype / Light Chain	IgG / Kappa
Mol. Weight of Antigen	29-32kDa
Cellular Localization	Cytolytic granule, Secreted
Species Reactivity	Human
Positive Control	A431 cells. Human tonsil, spleen or Hodgkin s Lymphoma tissue (IHC). Human Kidney, Human Lung

*\*Optimal dilution for a specific application should be determined.*

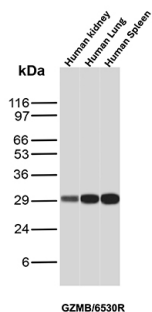
### Product Images for Recombinant Granzyme B (NK/T-Cell Lymphoma Marker) Antibody



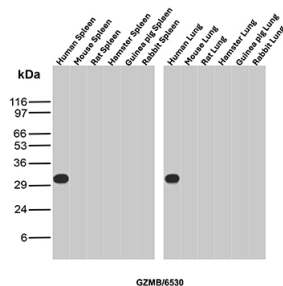
Formalin-fixed, paraffin-embedded human tonsil stained with Granzyme B Recombinant Rabbit Monoclonal Antibody (GZMB/6530R).



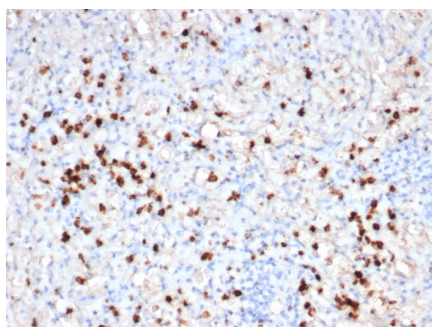
SDS-PAGE Analysis of Purified GZMB Recombinant Rabbit Monoclonal Antibody (GZMB/6530R). Confirmation of Integrity and Purity of Antibody.



Western Blot Analysis of Human Kidney, Human Lung and Human Spleen tissue lysates using Granzyme B Recombinant Rabbit Monoclonal Antibody (GZMB/6530R).



Western Blot Analysis of Spleen and Lung tissue lysates of different species using Granzyme B Recombinant Rabbit Monoclonal Antibody (GZMB/6530R).



Formalin-fixed, paraffin-embedded human spleen stained with Granzyme B Recombinant Rabbit Monoclonal Antibody (GZMB/6530R).

## Specificity & Comments

Granzyme B is a member of the granule serine protease family stored specifically in NK cells or cytotoxic T cells. Cytolytic T lymphocytes (CTL) and natural killer (NK) cells share the ability to recognize, bind, and lyse specific target cells. They are thought to protect their host by lysing cells bearing on their surface 'nonself' antigens, usually peptides or proteins resulting from infection by intracellular pathogens. Granzyme B is crucial for the rapid induction of target cell apoptosis by CTLs in the cell-mediated immune response. Granzyme B is useful as a marker in the identification of NK/T-cell lymphomas. High percentages of cytotoxic T-cells have been shown to be an unfavorable prognostic indicator in Hodgkin's Disease.

## Limitations and Warranty

This antibody is available for research use only and is not approved for use in diagnosis. There are no warranties, expressed or implied, which extend beyond this description. Company is not liable for any personal injury or economic loss resulting from this product.

## Supplied As

200ug/ml of Ab purified from Bioreactor Concentrate by Protein A/G. Prepared in 1mM PBS with 0.05% BSA & 0.05% azide. Also available WITHOUT BSA & azide at 1.0mg/ml.

## Storage and Stability

Antibody with azide - store at 2 to 8 °C. Antibody without azide - store at -20 to -80 °C. Antibody is stable for 24 months. Non-hazardous. No MSDS required.

## Research Areas

Apoptosis, Autophagy, Cardiovascular, Signal Transduction