

Glutathione S-Transferase Mu3 (GSTM3) Antibody

Mouse Monoclonal Antibody [Clone CPTC-GSTMu3-1]

Catalog No	Format	Size
2947-MSM1-P0	Purified Ab with BSA and Azide at 200ug/ml	20 ug
2947-MSM1-P1	Purified Ab with BSA and Azide at 200ug/ml	100 ug
2947-MSM1-P1ABX	Purified Ab WITHOUT BSA and Azide at 1.0mg/ml	100 ug

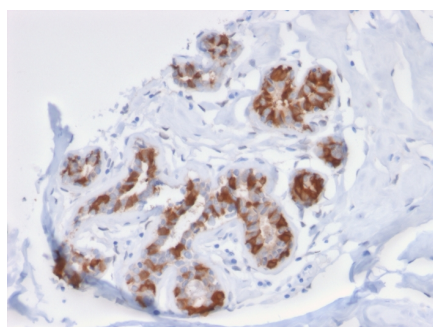
Applications	Tested Dillution	Note
Immunohistochemistry (IHC)	1-2ug/ml	30 min at RT. Staining of formalin-fixed tissues requires heating tissue sections in 10mM Tris with 1mM EDTA, pH 9.0, for 45 min at 95°C followed by cooling at RT for 20 minutes
Western Blot (WB)	2-4ug/ml	

Product Details

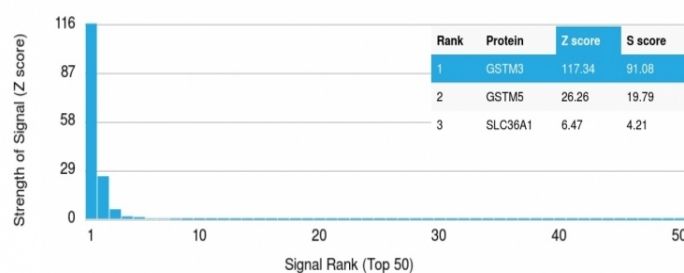
Clone	CPTC-GSTMu3-1
Gene Name	GSTM3
Immunogen	Recombinant full-length human GSTM3 protein
Host	Mouse
Clonality	Monoclonal
Isotype / Light Chain	IgG2a / Kappa
Mol. Weight of Antigen	26kDa
Cellular Localization	Cytoplasm
Species Reactivity	Human
Positive Control	HeLA, T-47D cell lysate. Human brain, testis or kidney.

*Optimal dilution for a specific application should be determined.

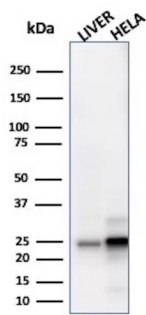
Product Images for Glutathione S-Transferase Mu3 (GSTM3) Antibody



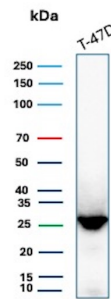
Formalin-fixed, paraffin-embedded human Breast Carcinoma stained with Purified GST Mu3 Mouse Monoclonal Antibody (CPTC- GSTMu3-1).



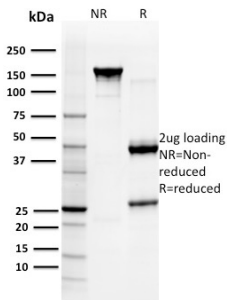
Analysis of Protein Array containing more than 19,000 full-length human proteins using Glutathione S-Transferase Mu3 (GSTM3) Mouse Monoclonal Antibody (CPTC-GSTMu3-1). Z- and S- Score: The Z-score represents the strength of a signal that a monoclonal antibody (Monoclonal Antibody) (in combination with a fluorescently-tagged anti-IgG secondary antibody) produces when binding to a particular protein on the HuProt™ array. Z-scores are described in units of standard deviations (SD's) above the mean value of all signals generated on that array. If targets on HuProt™ are arranged in descending order of the Z-score, the S-score is the difference (also in units of SD's) between the Z-score. S-score therefore represents the relative target specificity of a Monoclonal Antibody to its intended target. A Monoclonal Antibody is considered to be specific to its intended target, if the Monoclonal Antibody has an S-score of at least 2.5. For example, if a Monoclonal Antibody binds to protein X with a Z-score of 43 and to protein Y with a Z-score of 14, then the S-score for the binding of that Monoclonal Antibody to protein X is equal to 29.



Western blot analysis of (1) human liver tissue and (2) HeLa cell lysate using GST Mu3 Mouse Monoclonal Antibody (CPTC-GSTMu3-1).



Western Blot Analysis of T-47D lysate using GSTM3 Mouse Monoclonal Antibody (CPTC-GSTMu3-1).



SDS-PAGE Analysis Purified GST Mu3 Mouse Monoclonal Antibody (CPTC- GSTMu3-1). Confirmation of Purity and Integrity of Antibody.

Specificity & Comments

Supplied As

200ug/ml of Ab Purified from Bioreactor Concentrate by Protein A/G. Prepared in 10mM PBS with 0.05% BSA & 0.05% azide. Also available WITHOUT BSA & azide at 1.0mg/ml.

Storage and Stability

Antibody with azide - store at 2 to 8°C. Antibody without azide - store at -20 to -80°C. Antibody is stable for 24 months. Non-hazardous. No MSDS required.

Research Areas

Cardiovascular

Limitations and Warranty

This antibody is available for research use only and is not approved for use in diagnosis. There are no warranties, expressed or implied, which extend beyond this description. Company is not liable for any personal injury or economic loss resulting from this product.