

## PD-L1 / PDCD1LG1 / CD274 / B7-H1 (Cancer Immunotherapy Target) Antibody

Mouse Monoclonal Antibody [Clone PDL1/2744]

Catalog No	Format	Size
29126-MSM4-P0	Purified Ab with BSA and Azide at 200ug/ml	20 ug
29126-MSM4-P1	Purified Ab with BSA and Azide at 200ug/ml	100 ug
29126-MSM4-P1ABX	Purified Ab WITHOUT BSA and Azide at 1.0mg/ml	100 ug

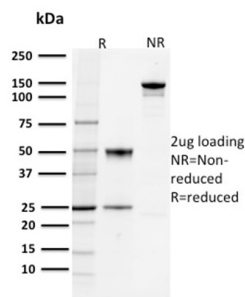
Applications	Tested Dillution	Note
Western Blot (WB)	2-4ug/ml	

### Product Details

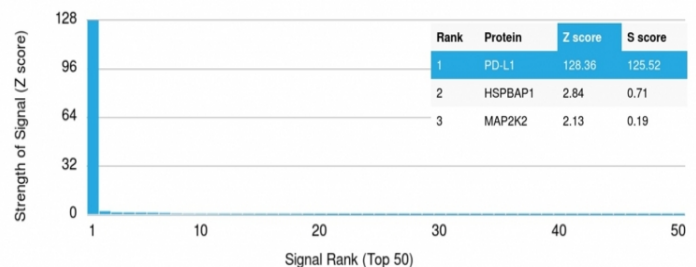
<b>Clone</b>	PDL1/2744
<b>Gene Name</b>	CD274
<b>Immunogen</b>	Recombinant fragment of human CD274 protein (around aa39-191) (exact sequence is proprietary)
<b>Host</b>	Mouse
<b>Clonality</b>	Monoclonal
<b>Isotype / Light Chain</b>	IgG1 / Kappa
<b>Mol. Weight of Antigen</b>	37-50kDa
<b>Cellular Localization</b>	Cell membrane, Early endosome membrane, Endomembrane system, Recycling endosome membrane
<b>Species Reactivity</b>	Human, Mouse
<b>Positive Control</b>	Cervical or Breast Carcinoma., HEK293 or HepG2 cells. Lung SqCC, Jurkat

\*Optimal dilution for a specific application should be determined.

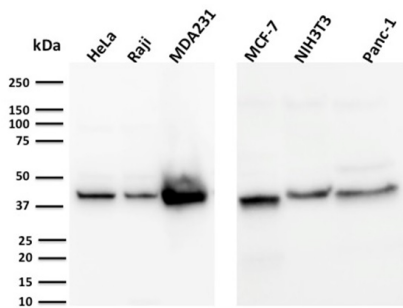
### Product Images for PD-L1 / PDCD1LG1 / CD274 / B7-H1 (Cancer Immunotherapy Target) Antibody



SDS-PAGE Analysis of Purified PD-L1 Mouse Monoclonal Antibody (PDL1/2744). Confirmation of Purity and Integrity of Antibody.



Analysis of Protein Array containing more than 19,000 full-length human proteins using PD-L1 Mouse Monoclonal Antibody (PDL1/2744). Z- and S- Score: The Z-score represents the strength of a signal that a monoclonal antibody (Monoclonal Antibody) (in combination with a fluorescently-tagged anti-IgG secondary antibody) produces when binding to a particular protein on the HuProt™ array. Z-scores are described in units of standard deviations (SD,  $\sigma$ s) above the mean value of all signals generated on that array. If targets on HuProt™ are arranged in descending order of the Z-score, the S-score is the difference (also in units of SD,  $\sigma$ s) between the Z-score. S-score therefore represents the relative target specificity of a Monoclonal Antibody to its intended target. A Monoclonal Antibody is considered to be specific to its intended target, if the Monoclonal Antibody has an S-score of at least 2.5. For example, if a Monoclonal Antibody binds to protein X with a Z-score of 43 and to protein Y with a Z-score of 14, then the S-score for the binding of that Monoclonal Antibody to protein X is equal to 29.



Western Blot Analysis of HeLa, Raji, MDA231, MCF-7, NIH3T3, Panc-1, cell lysates using PD-L2 Mouse Monoclonal Antibody (PDL1/2744).

### Specificity & Comments

Engagement of CD28 by B7-1 (CD80) or B7-2 (CD86) in the presence of antigen promotes T-cell proliferation, cytokine production, differentiation of effector T-cells and the induction of BCLX, a promoter of T-cell survival. Engagement of CTLA4 by B7-1 or B7-2, on the other hand, may inhibit proliferation and interleukin-2 (IL-2) production. PD-L1 is 290-amino acid type I transmembrane protein, which is 20% and 15% identical to B7-1 and B7-2, respectively, has immunoglobulin V-like and C-like domains and a 30-amino acid cytoplasmic tail. PD-L1 does not bind CD28, cytotoxic T-lymphocyte A4 or ICOS (inducible co-stimulator). IL-2, although produced in small amounts, is required for the effect of PD-L1 co-stimulation. PD-L2 protein contains a signal sequence, IgV- and IgC-like domains, a transmembrane region and a cytoplasmic region. The constitutive expression of PD-L1 and PD-L2 on parenchymal cells of heart, lung and kidney suggests that the PD-1-PD-L system could provide unique negative signaling to help prevent autoimmune diseases.

### Limitations and Warranty

This antibody is available for research use only and is not approved for use in diagnosis. There are no warranties, expressed or implied, which extend beyond this description. Company is not liable for any personal injury or economic loss resulting from this product.

### Supplied As

200ug/ml of Ab Purified from Bioreactor Concentrate by Protein A/G. Prepared in 10mM PBS with 0.05% BSA & 0.05% azide. Also available WITHOUT BSA & azide at 1.0mg/ml.

### Storage and Stability

Antibody with azide - store at 2 to 8°C. Antibody without azide - store at -20 to -80°C. Antibody is stable for 24 months. Non-hazardous. No MSDS required.

### Research Areas

Immunology, Mast Cell Marker, PD-1 blockade immunotherapy, Signal Transduction