

## Galectin-13 (GAL13) / Placental Protein 13 (PP13) Antibody

Mouse Monoclonal Antibody [Clone PP13/1162]

Catalog No	Format	Size
29124-MSM2-P0	Purified Ab with BSA and Azide at 200ug/ml	20 ug
29124-MSM2-P1	Purified Ab with BSA and Azide at 200ug/ml	100 ug
29124-MSM2-P1ABX	Purified Ab WITHOUT BSA and Azide at 1.0mg/ml	100 ug

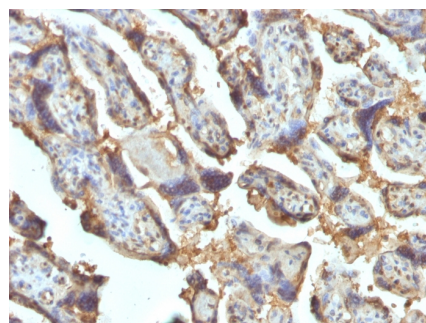
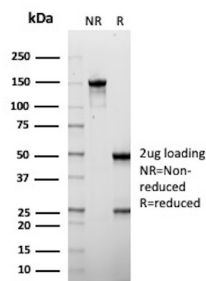
Applications	Tested Dillution	Note
Immunohistochemistry (IHC)	1-2ug/ml	30 min at RT. Staining of formalin-fixed tissues requires heating tissue sections in 10mM Tris with 1mM EDTA, pH 9.0, for 45 min at 95°C followed by cooling at RT for 20 minutes

### Product Details

Clone	PP13/1162
Gene Name	LGALS13
Immunogen	Recombinant human Galectin-13 protein fragment (aa23-134)
Host	Mouse
Clonality	Monoclonal
Isotype / Light Chain	IgG2b / Kappa
Mol. Weight of Antigen	16kDa (monomer); 32kDa (homodimer)
Cellular Localization	Cytoplasm, Nucleus matrix
Species Reactivity	Human
Positive Control	K-562 cells. Placenta or Spleen.

*\*Optimal dilution for a specific application should be determined.*

### Product Images for Galectin-13 (GAL13) / Placental Protein 13 (PP13) Antibody



SDS-PAGE Analysis of Purified Galactoside-binding soluble lectin 13 Mouse Monoclonal Antibody (PP13/1162). Confirmation of Purity and Integrity of Antibody.

Formalin-fixed, paraffin-embedded human Placenta stained with Galectin-13 / PP13 Monoclonal Antibody (PP13/1162).

### Specificity & Comments

It recognizes a 32kDa protein, which is identified as homodimer of galectin-13 (also known as PP13). Galectins are a family of soluble - galactoside-binding lectins that modulate cell-to-cell adhesion and cell-to-extracellular matrix (ECM) interactions and play a role in tumor progression, pre-mRNA splicing and apoptosis. One such member, galectin-13, is a 139 amino acid protein that contains one galectin domain. Possessing lysophospholipase activity, galectin-13 exists as a disulfide-linked homodimer. Galectin-13 is suggested to have a developmental role in the placenta and may display immunobiological activity in fetomaternal blood-spaces. Screening for galectin-13 in maternal serum during the first trimester of pregnancy may serve as a diagnostic marker to predict preterm pre-eclampsia.

### Limitations and Warranty

This antibody is available for research use only and is not approved for use in diagnosis. There are no warranties, expressed or implied, which extend beyond this description. Company is not liable for any personal injury or economic loss resulting from this product.

### Supplied As

200ug/ml of Ab Purified from Bioreactor Concentrate by Protein A/G. Prepared in 10mM PBS with 0.05% BSA & 0.05% azide. Also available WITHOUT BSA & azide at 1.0mg/ml.

### Storage and Stability

Antibody with azide - store at 2 to 8°C. Antibody without azide - store at -20 to -80°C. Antibody is stable for 24 months. Non-hazardous. No MSDS required.

### Research Areas

Cardiovascular, Nuclear Marker