

Galectin-13 (GAL13) / Placental Protein 13 (PP13) Antibody

Mouse Monoclonal Antibody [Clone PP13/1161]

| Catalog No | Format | Size |
|------------------|---|--------|
| 29124-MSM1-P0 | Purified Ab with BSA and Azide at 200ug/ml | 20 ug |
| 29124-MSM1-P1 | Purified Ab with BSA and Azide at 200ug/ml | 100 ug |
| 29124-MSM1-P1ABX | Purified Ab WITHOUT BSA and Azide at 1.0mg/ml | 100 ug |

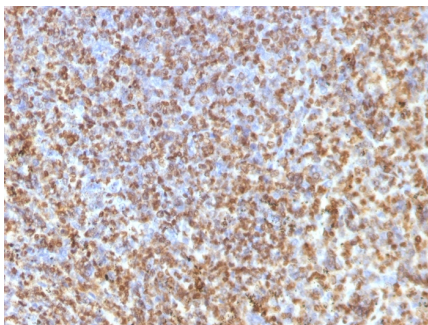
| Applications | Tested Dillution | Note |
|----------------------------|---------------------|---|
| Flow Cytometry (Flow) | 1-2ug/million cells | |
| Immunofluorescence (IF) | 1-3ug/ml | |
| Immunohistochemistry (IHC) | 1-2ug/ml | 30 min at RT. Staining of formalin-fixed tissues requires heating tissue sections in 10mM Tris with 1mM EDTA, pH 9.0, for 45 min at 95°C followed by cooling at RT for 20 minutes |
| Western Blot (WB) | 2-4ug/ml | |

Product Details

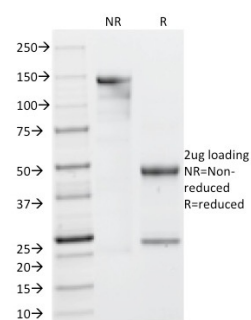
| | |
|-------------------------------|---|
| Clone | PP13/1161 |
| Gene Name | LGALS13 |
| Immunogen | Recombinant human Galectin-13 protein fragment (aa23-134) |
| Host | Mouse |
| Clonality | Monoclonal |
| Isotype / Light Chain | IgG2b / Kappa |
| Mol. Weight of Antigen | 16kDa (monomer); 32kDa (homodimer) |
| Cellular Localization | Cytoplasm, Nucleus matrix |
| Species Reactivity | Human |
| Positive Control | K-562 cells. Human Placenta or Spleen. |

*Optimal dilution for a specific application should be determined.

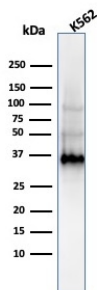
Product Images for Galectin-13 (GAL13) / Placental Protein 13 (PP13) Antibody



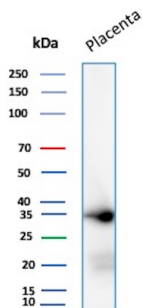
Formalin-fixed, paraffin-embedded human Spleen stained with Galectin-13 Monoclonal Antibody (PP13/1161).



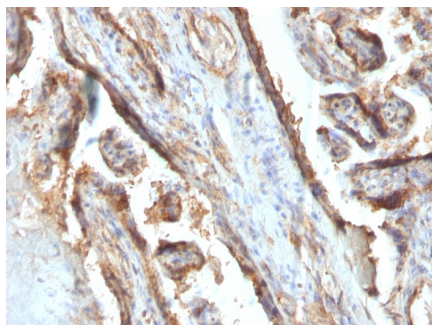
SDS-PAGE Analysis Purified Galectin-13 MAb (PP13/1161). Confirmation of Purity and Integrity of Antibody.



Western Blot of K562 Cell Lysate using Galeactin-13 MAb (PP13/1161).



Western Blot of Human Placenta tissue Lysate using Galeactin-13 Mouse Monoclonal Antibody (PP13/1161).



Formalin-fixed, paraffin-embedded human Placenta stained with Galectin-13 Monoclonal Antibody (PP13/1161).

Specificity & Comments

It recognizes a 32kDa protein, which is identified as homodimer of galectin-13 (also known as PP13). Galectins are a family of soluble - galactoside-binding lectins that modulate cell-to-cell adhesion and cell-to-extracellular matrix (ECM) interactions and play a role in tumor progression, pre-mRNA splicing and apoptosis. One such member, galectin-13, is a 139 amino acid protein that contains one galectin domain. Possessing lysophospholipase activity, galectin-13 exists as a disulfide-linked homodimer. Galectin-13 is suggested to have a developmental role in the placenta and may display immunobiological activity in feto-maternal blood-spaces. Screening for galectin-13 in maternal serum during the first trimester of pregnancy may serve as a diagnostic marker to predict preterm pre-eclampsia.

Limitations and Warranty

This antibody is available for research use only and is not approved for use in diagnosis. There are no warranties, expressed or implied, which extend beyond this description. Company is not liable for any personal injury or economic loss resulting from this product.

Supplied As

200ug/ml of Ab Purified from Bioreactor Concentrate by Protein A/G. Prepared in 10mM PBS with 0.05% BSA & 0.05% azide. Also available WITHOUT BSA & azide at 1.0mg/ml.

Storage and Stability

Antibody with azide - store at 2 to 8°C. Antibody without azide - store at -20 to -80°C. Antibody is stable for 24 months. Non-hazardous. No MSDS required.

Research Areas

Cardiovascular, Nuclear Marker