

CSPG4 / MCSP (Marker of Malignant Melanoma) Antibody

Mouse Monoclonal Antibody [Clone LHM 2]

Catalog No	Format	Size
1464-MSM17-P0	Purified Ab with BSA and Azide at 200ug/ml	20 ug
1464-MSM17-P1	Purified Ab with BSA and Azide at 200ug/ml	100 ug
1464-MSM17-P1ABX	Purified Ab WITHOUT BSA and Azide at 1.0mg/ml	100 ug

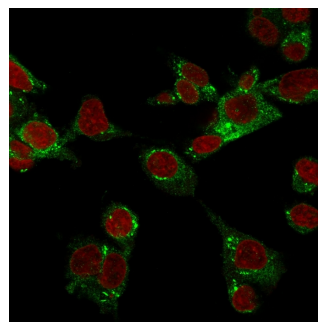
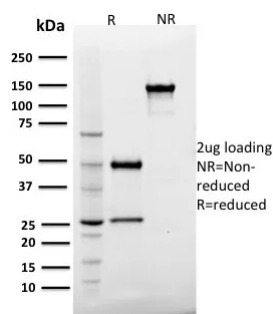
Applications	Tested Dillution	Note
Flow Cytometry (Flow)	1-2ug/million cells	
Immunofluorescence (IF)	1-3ug/ml	
Immunohistochemistry (IHC)	1-2ug/ml	30 min at RT. Staining of formalin-fixed tissues requires heating tissue sections in 10mM Tris with 1mM EDTA, pH 9.0, for 45 min at 95°C followed by cooling at RT for 20 minutes
Western Blot (WB)	2-4ug/ml	

Product Details

Clone	LHM 2
Gene Name	CSPG4
Immunogen	A 375P cells crude extract
Host	Mouse
Clonality	Monoclonal
Isotype / Light Chain	IgG1 / Kappa
Mol. Weight of Antigen	270-300kDa
Cellular Localization	Cell membrane, Cell projection, Cell surface
Species Reactivity	Human, Mouse, Rat
Positive Control	MCF7 or HepG2 cells. Human brain or malignant melanoma.

*Optimal dilution for a specific application should be determined.

Product Images for CSPG4 / MCSP (Marker of Malignant Melanoma) Antibody



SDS-PAGE Analysis Purified CSPG4 / NG2 Mouse Monoclonal Antibody (LHM 2). Confirmation of Purity and Integrity of Antibody.

Confocal immunofluorescence image of HepG2 cells stained with CSPG4 / MCSP Mouse Monoclonal Antibody (LHM 2) followed by goat anti-Mouse CF488 (green). RedDot is used to label the nuclei red.

Specificity & Comments

NG2 (also known as melanoma-associated chondroitin sulfate proteoglycan 4, MCSP, MCSPG, MSK16 and MEL-CSPG) stabilizes cell-substratum interactions during early events of melanoma cell spreading on endothelial basement membranes. NG2 may facilitate primary melanoma progression by enhancing the activation of key signaling pathways important for tumor invasion and growth. Threonine 2256 phosphorylation of rat NG2 (threonine 2252 phosphorylation of human NG2) leads to redistribution of NG2 on the surface of astrocytomas, polarization of the cell and a significant increase in cell motility. NG2 acts as a co-receptor for spreading and focal contact formation in association with $\alpha 4 \beta 1$ integrin in malignant melanoma cells. NG2 is present on blood vessels throughout the rat embryo. Micro-vessels within the rat CNS express NG2 on endothelial cells, and outside the CNS, NG2 is present on smooth muscle cells. NG2 is a novel marker for epidermal stem cells that contributes to their patterned distribution by promoting stem cell clustering.

Limitations and Warranty

This antibody is available for research use only and is not approved for use in diagnosis. There are no warranties, expressed or implied, which extend beyond this description. Company is not liable for any personal injury or economic loss resulting from this product.

Supplied As

200ug/ml of Ab Purified from Bioreactor Concentrate by Protein G. Prepared in 10mM PBS with 0.05% BSA & 0.05% azide. Also available WITHOUT BSA & azide at 1.0mg/ml.

Storage and Stability

Antibody with azide - store at 2 to 8°C. Antibody without azide - store at -20 to -80°C. Antibody is stable for 24 months. Non-hazardous. No MSDS required.

Research Areas

Melanoma, Neuroscience
