

## Blood Group Antigen A (CD173) Antibody

Mouse Monoclonal Antibody [Clone HE-10]

Catalog No	Format	Size
28-MSM8-P0	Purified Ab with BSA and Azide at 200ug/ml	20 ug
28-MSM8-P1	Purified Ab with BSA and Azide at 200ug/ml	100 ug
28-MSM8-P1BX	Purified Ab WITHOUT BSA at 1.0mg/ml	100 ug

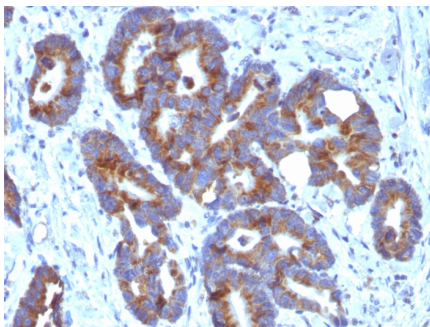
Applications	Tested Dillution	Note
Immunofluorescence (IF)	1-3ug/ml	
Immunohistochemistry (IHC)	1-2ug/ml	30 min at RT. Staining of formalin-fixed tissues requires heating tissue sections in 10mM Tris with 1mM EDTA, pH 9.0, for 45 min at 95°C followed by cooling at RT for 20 minutes

### Product Details

<b>Clone</b>	HE-10
<b>Gene Name</b>	ABO
<b>Immunogen</b>	Mixture of erythrocytes of blood group A and glyco protein fraction isolated from the saliva of secretors with blood group A
<b>Host</b>	Mouse
<b>Clonality</b>	Monoclonal
<b>Isotype / Light Chain</b>	IgM / Kappa
<b>Mol. Weight of Antigen</b>	Multiple
<b>Cellular Localization</b>	Golgi apparatus, Golgi stack membrane, Secreted
<b>Species Reactivity</b>	Human
<b>Positive Control</b>	KG1 cells. Human colorectal carcinoma tissues.

*\*Optimal dilution for a specific application should be determined.*

### Product Images for Blood Group Antigen A (CD173) Antibody



Formalin-fixed, paraffin-embedded human Colorectal Carcinoma stained with Blood Group Antigen A Monoclonal Antibody (HE-10)

### Specificity & Comments

This MAb preferably reacts with determinants of chain A and H type 3(Gal1-3GalNAc-R) and 4 (Gal1-3GalNAc-R), but not with type 1 and 2 chain structures. It is not reactive with immuno-dominant A trisaccharide. This MAb is applicable for tissue staining in tumor patients with blood groups A and AB. It shows a highly heterogeneous reactivity in human colon tumor tissue and adjacent mucosa. Blood-group antigens are generally defined as molecules formed by sequential addition of saccharides to the carbohydrate side chains of lipids and proteins detected on erythrocytes and certain epithelial cells. The A, B and H antigens are reported to undergo modulation during malignant cellular transformation. Blood group related antigens represent a group of carbohydrate determinants carried on both glycolipids and glycoproteins. They are usually mucin-type, and are detected on erythrocytes, certain epithelial cells, and in secretions of certain individuals. Sixteen genetically and biosynthetically distinct but inter-related specificities belong to this group of antigens, including A, B, H, Lewis A, Lewis B, Lewis X, Lewis Y, and precursor type 1 chain antigens.

---

### Limitations and Warranty

This antibody is available for research use only and is not approved for use in diagnosis. There are no warranties, expressed or implied, which extend beyond this description. Company is not liable for any personal injury or economic loss resulting from this product.

---

### Supplied As

200ug/ml of Ab Purified from Bioreactor Concentrate. Prepared in 10mM PBS with 0.05% BSA & 0.05% azide. Also available WITHOUT BSA & azide at 1.0mg/ml.

---

### Storage and Stability

Antibody with azide - store at 2 to 8°C. Antibody without azide - store at -20 to -80°C. Antibody is stable for 24 months. Non-hazardous. No MSDS required.

---

### Research Areas

Cardiovascular

---