

GnRH-Receptor / LH-RH Receptor Antibody

Mouse Monoclonal Antibody [Clone F1G4]

Catalog No	Format	Size
2798-MSM1-P0	Purified Ab with BSA and Azide at 200ug/ml	20 ug
2798-MSM1-P1	Purified Ab with BSA and Azide at 200ug/ml	100 ug
2798-MSM1-P1ABX	Purified Ab WITHOUT BSA and Azide at 1.0mg/ml	100 ug

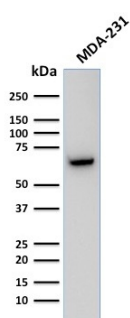
Applications	Tested Dillution	Note
Flow Cytometry (Flow)	1-2ug/million cells	
Immunofluorescence (IF)	1-3ug/ml	
Immunohistochemistry (IHC)	1-2ug/ml	30 min at RT. Staining of formalin-fixed tissues requires heating tissue sections in 10mM Tris with 1mM EDTA, pH 9.0, for 45 min at 95°C followed by cooling at RT for 20 minutes
Western Blot (WB)	2-4ug/ml	

Product Details

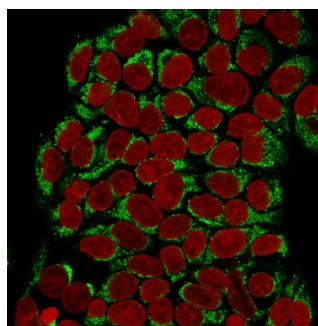
Clone	F1G4
Gene Name	GNRHR
Immunogen	A synthetic peptide aa 1-29 (MANSASPEQNHCSAINNSIPLMQGNLPY) from the N-terminal of human GnRH receptor.
Host	Mouse
Clonality	Monoclonal
Isotype / Light Chain	IgG1 / Kappa
Mol. Weight of Antigen	54-60kDa
Cellular Localization	Cell membrane
Species Reactivity	Human, Rat
Positive Control	MCF-7, MDA231, ovarian or breast cancers., T47D cells. Pituitary gland

*Optimal dilution for a specific application should be determined.

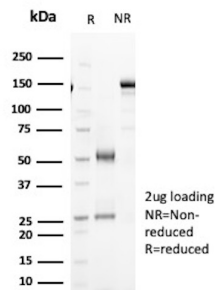
Product Images for GnRH-Receptor / LH-RH Receptor Antibody



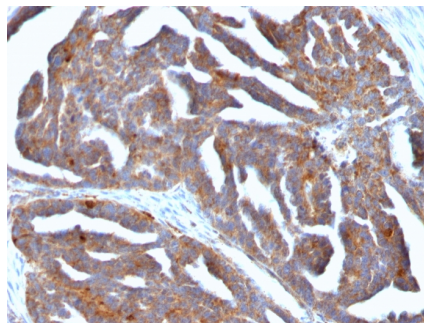
Western Blot Analysis of Human MDA-231 cell lysate using GnRH-Receptor Mouse Monoclonal Antibody (F1G4).



Immunofluorescence Analysis of Human MCF-7 cells labeling GnRH-R with GnRH-Receptor Mouse Monoclonal Antibody (F1G4) followed by Goat anti-mouse IgG-CF488 (Green). The nuclear counterstain is Reddot (Red).



SDS-PAGE Analysis of Purified Gonadotropin-releasing hormone receptor Mouse Monoclonal Antibody (F1G4). Confirmation of Purity and Integrity of Antibody.



Formalin-fixed, paraffin-embedded human Ovarian Tumor stained with GnRH-Receptor Mouse Monoclonal Antibody (F1G4).

Specificity & Comments

Recognizes an epitope on the extracellular domain of gonadotropin releasing hormone (GnRH) receptor or luteinizing hormone receptor (LHCGR). Lutropin (also designated luteinizing hormone) plays a role in spermatogenesis and ovulation by stimulating the testes and ovaries to produce steroids. Gonadotropin (also designated choriogonadotropin) production in the placenta maintains estrogen and progesterone levels during the first trimester of pregnancy. Ovaries and testes abundantly express luteinizing hormone/choriogonadotropin receptor. GnRH receptor contains seven hydrophobic transmembrane domains connected by hydrophilic extracellular and intracellular loops characteristic of G-protein coupled receptors. GnRH stimulates the gonadotrophs of the anterior pituitary to secrete luteinizing hormone (LH) as well as follicle-stimulating hormone (FSH). GnRH influences the protective effect of pregnancy and Gonadotropin against breast cancer. The expression of GnRH on breast carcinoma correlates in part to the degree of tumor differentiation. GnRH-positive breast tumors occur more frequently in tumors with greater cell differentiation in premenopausal women. GnRH is present in luteal and granulosa cells as well as in ovarian cell membrane preparations.

Limitations and Warranty

This antibody is available for research use only and is not approved for use in diagnosis. There are no warranties, expressed or implied, which extend beyond this description. Company is not liable for any personal injury or economic loss resulting from this product.

Supplied As

200ug/ml of Ab Purified from Bioreactor Concentrate by Protein A/G. Prepared in 10mM PBS with 0.05% BSA & 0.05% azide. Also available WITHOUT BSA at 1.0mg/ml.

Storage and Stability

Antibody with azide - store at 2 to 8°C. Antibody without azide - store at -20 to -80°C. Antibody is stable for 24 months. Non-hazardous. No MSDS required.

Research Areas

Signal Transduction