

Connexin 32 (Gap Junction Protein) Antibody

Mouse Monoclonal Antibody [Clone GJB1/1753]

Catalog No	Format	Size
2705-MSM3-P0	Purified Ab with BSA and Azide at 200ug/ml	20 ug
2705-MSM3-P1	Purified Ab with BSA and Azide at 200ug/ml	100 ug
2705-MSM3-P1ABX	Purified Ab WITHOUT BSA and Azide at 1.0mg/ml	100 ug

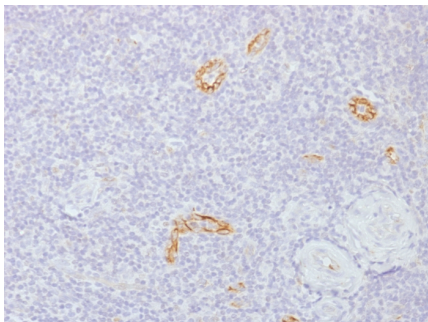
Applications	Tested Dillution	Note
Immunohistochemistry (IHC)	1-2ug/ml	30 min at RT. Staining of formalin-fixed tissues requires heating tissue sections in 10mM Tris with 1mM EDTA, pH 9.0, for 45 min at 95°C followed by cooling at RT for 20 minutes

Product Details

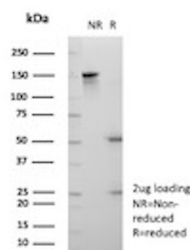
Clone	GJB1/1753
Gene Name	GJB1
Immunogen	Recombinant human GJB1 protein
Host	Mouse
Clonality	Monoclonal
Isotype / Light Chain	IgG
Mol. Weight of Antigen	27-32kDa
Cellular Localization	Cell junction, Cell membrane, Gap junction
Species Reactivity	Human, Mouse, Rat
Positive Control	Kidney, MCF-7 cells. Liver, Stomach or Tonsil.

*Optimal dilution for a specific application should be determined.

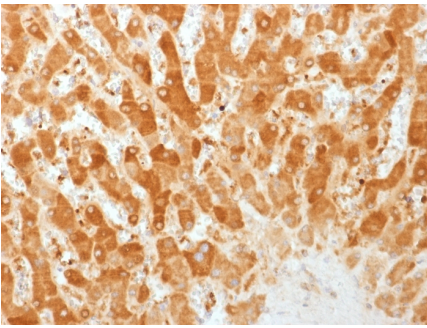
Product Images for Connexin 32 (Gap Junction Protein) Antibody



Formalin-fixed, paraffin-embedded human Tonsil stained with Connexin 32 Monoclonal Antibody (GJB1/1753)



SDS-PAGE Analysis of Purified Gap junction beta-1 protein Mouse Monoclonal Antibody (GJB1/1753). Confirmation of Purity and Integrity of Antibody.



Formalin-fixed, paraffin-embedded human Liver stained with Connexin 32 Monoclonal Antibody (GJB1/1753)

Specificity & Comments

This Ab recognizes a protein of 27-32kDa, identified as Connexin 32. The connexin family of proteins forms hexameric complexes called 'connexons' that facilitate movement of low molecular weight proteins between cells via gap junctions. Connexin proteins share a common topology of four transmembrane therefore, one connexin usually cannot fully substitute for another.

Supplied As

200ug/ml of Ab Purified from Bioreactor Concentrate by Protein G. Prepared in 10mM PBS with 0.05% BSA & 0.05% azide. Also available WITHOUT BSA & azide at 1.0mg/ml.

Storage and Stability

Antibody with azide - store at 2 to 8°C. Antibody without azide - store at -20 to -80°C. Antibody is stable for 24 months. Non-hazardous. No MSDS required.

Limitations and Warranty

This antibody is available for research use only and is not approved for use in diagnosis. There are no warranties, expressed or implied, which extend beyond this description. Company is not liable for any personal injury or economic loss resulting from this product.
