

Recombinant Ferritin, Light Chain (Node-Negative Breast Tumor Prognostic Marker) Antibody

Mouse Monoclonal Antibody [Clone rFTL/1388]

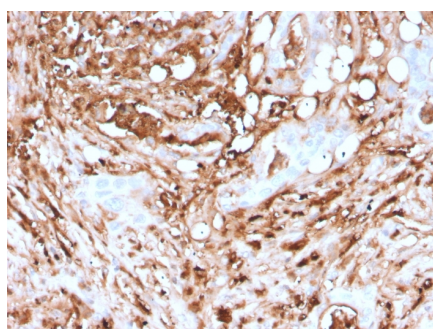
| Catalog No | Format | Size |
|-----------------|---|--------|
| 2512-MSM7-P0 | Purified Ab with BSA and Azide at 200ug/ml | 20 ug |
| 2512-MSM7-P1 | Purified Ab with BSA and Azide at 200ug/ml | 100 ug |
| 2512-MSM7-P1ABX | Purified Ab WITHOUT BSA and Azide at 1.0mg/ml | 100 ug |

| Applications | Tested Dillution | Note |
|----------------------------|------------------|---|
| Immunohistochemistry (IHC) | 1-2ug/ml | 30 min at RT. Staining of formalin-fixed tissues requires heating tissue sections in 10mM Tris with 1mM EDTA, pH 9.0, for 45 min at 95°C followed by cooling at RT for 20 minutes |
| Western Blot (WB) | 2-4ug/ml | |

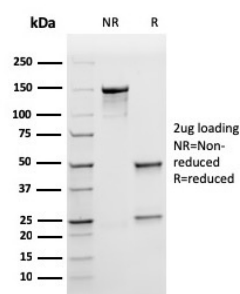
| Product Details | |
|------------------------|---|
| Clone | rFTL/1388 |
| Gene Name | FTL |
| Immunogen | Recombinant fragment (around aa 38-165) of human FTL protein (exact sequence is proprietary) |
| Host | Mouse |
| Clonality | Monoclonal |
| Isotype / Light Chain | IgG1 / Kappa |
| Mol. Weight of Antigen | 19-25kDa |
| Species Reactivity | Human |
| Positive Control | Cerebellum or Testis., HeLa, HePG2, HL-60 or 293T cells. Pancreas, Kidney, Liver, Brain, Spleen, Lung |

**Optimal dilution for a specific application should be determined.*

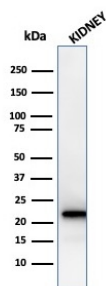
Product Images for Recombinant Ferritin, Light Chain (Node-Negative Breast Tumor Prognostic Marker) Antibody



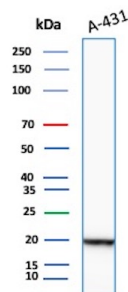
Formalin-fixed, paraffin-embedded human Pancreas stained with Ferritin, Light Chain Recombinant Mouse Monoclonal Antibody (rFTL/1388).



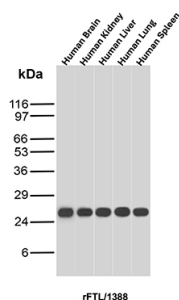
SDS-PAGE Analysis of Purified Ferritin LC Recombinant Mouse Monoclonal Antibody (rFTL/1388). Confirmation of Integrity and Purity of Antibody



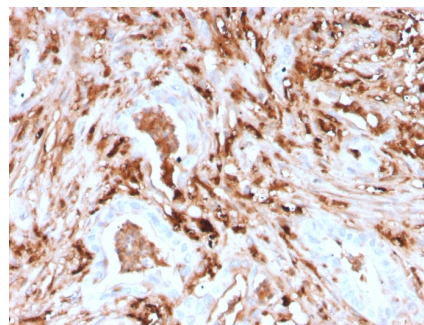
Western Blot Analysis of human Kidney tissue lysate using Ferritin LC Recombinant Mouse Monoclonal Antibody (rFTL/1388).



Western blot analysis of A-431 cell lysate using FTL Recombinant Mouse Monoclonal Antibody (rFTL/1388).



Western blot analysis of Brain, Kidney, Liver, Lung and Spleen tissue lysates of human using FTL Recombinant Mouse Monoclonal Antibody (rFTL/1388).



Formalin-fixed, paraffin-embedded human Pancreas stained with Ferritin, Light Chain Recombinant Mouse Monoclonal Antibody (rFTL/1388).

Specificity & Comments

Mammalian ferritins consist of 24 subunits made up of 2 types of polypeptide chains, ferritin heavy chain and ferritin light chain. Ferritin heavy chains catalyze the first step in iron storage, the oxidation of Fe (II), whereas ferritin light chains promote the nucleation of ferrihydrite, enabling storage of Fe (III). Light chain ferritin is involved in cataracts by at least two mechanisms, hereditary hyperferritinemia cataract syndrome, in which light chain ferritin is overexpressed, and oxidative stress, an important factor in the development of ageing-related cataracts.

Supplied As

200ug/ml of Ab Purified from Bioreactor Concentrate by Protein A/G. Prepared in 10mM PBS with 0.05% BSA & 0.05% azide. Also available WITHOUT BSA & azide at 1.0mg/ml.

Storage and Stability

Antibody with azide - store at 2 to 8°C. Antibody without azide - store at -20 to -80°C. Antibody is stable for 24 months. Non-hazardous. No MSDS required.

Research Areas

Cardiovascular, Immunology, Dendritic Cell Marker

Limitations and Warranty

This antibody is available for research use only and is not approved for use in diagnosis. There are no warranties, expressed or implied, which extend beyond this description. Company is not liable for any personal injury or economic loss resulting from this product.