

Alkaline Phosphatase (Placental) / PLAP (Germ Cell Tumor Marker) Antibody

Mouse Monoclonal Antibody [Clone ALPP/516]

Catalog No	Format	Size
250-MSM3-P0	Purified Ab with BSA and Azide at 200ug/ml	20 ug
250-MSM3-P1	Purified Ab with BSA and Azide at 200ug/ml	100 ug
250-MSM3-P1ABX	Purified Ab WITHOUT BSA and Azide at 1.0mg/ml	100 ug

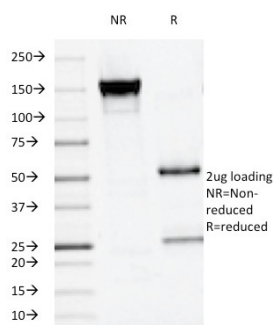
Applications	Tested Dillution	Note

Product Details

Clone	ALPP/516
Gene Name	ALPP
Immunogen	Recombinant full-length human ALPP protein
Host	Mouse
Clonality	Monoclonal
Isotype / Light Chain	IgG1 / Kappa
Mol. Weight of Antigen	70kDa
Cellular Localization	Cell membrane
Species Reactivity	Human
Positive Control	HepG2 cells. Placenta or seminoma.

*Optimal dilution for a specific application should be determined.

Product Images for Alkaline Phosphatase (Placental) / PLAP (Germ Cell Tumor Marker) Antibody



SDS-PAGE Analysis of Purified PLAP Mouse Monoclonal Antibody (ALPP/516).
Confirmation of Integrity and Purity of Antibody.

Specificity & Comments

PLAP is a tissue specific, trophoblast-derived, 70kDa, glycosyl-phosphatidylinositol (GPI)-anchored, dimeric, Zn²⁺ metallo-glycoprotein that catalyzes the hydrolysis of phosphomonoesters into an inorganic phosphate and an alcohol. It is present in the placenta and serum of pregnant women and in high frequency in gynecological and testicular cancers and in lower frequency in other tumors. The three tissue-specific AP's in humans, PLAP, germ cell AP (GCAP) and intestinal AP, are 90-98% homologous. Non-tissue specific AP is found in kidney, liver and bone. This MAb binds equally well to all common allelic variants (S, F, FS and I) of PLAP and to some variants of AP from normal human testis. This MAb can be used as tracer antibody in ELISA to detect PLAP in serum of S, F, FS and I phenotypes.

Limitations and Warranty

This antibody is available for research use only and is not approved for use in diagnosis. There are no warranties, expressed or implied, which extend beyond this description. Company is not liable for any personal injury or economic loss resulting from this product.

Supplied As

200ug/ml of Ab Purified from Bioreactor Concentrate by Protein A/G. Prepared in 10mM PBS with 0.05% BSA & 0.05% azide. Also available WITHOUT BSA & azide at 1.0mg/ml.

Storage and Stability

Antibody with azide - store at 2 to 8°C. Antibody without azide - store at -20 to -80°C. Antibody is stable for 24 months. Non-hazardous. No MSDS required.

Research Areas

Mesenchymal Stem Cell Differentiation, Stem Cell Differentiation