

Recombinant FSH-beta (Follicle Stimulating Hormone-beta) Antibody

Rabbit Monoclonal Antibody [Clone FSHb/2033R]

Catalog No	Format	Size
2488-RBM3-P0	Purified Ab with BSA and Azide at 200ug/ml	20 ug
2488-RBM3-P1	Purified Ab with BSA and Azide at 200ug/ml	100 ug
2488-RBM3-P1ABX	Purified Ab WITHOUT BSA and Azide at 1.0mg/ml	100 ug

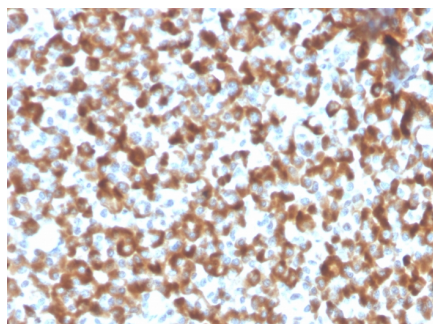
Applications	Tested Dillution	Note
Flow Cytometry (Flow)	1-2ug/million cells	
Immunofluorescence (IF)	1-3ug/ml	
Immunohistochemistry (IHC)	1-2ug/ml	30 min at RT. Staining of formalin-fixed tissues requires heating tissue sections in 10mM Tris with 1mM EDTA, pH 9.0, for 45 min at 95°C followed by cooling at RT for 20 minutes
Western Blot (WB)	2-4ug/ml	

Product Details

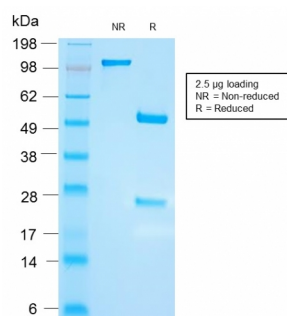
Clone	FSHb/2033R
Gene Name	FSHB
Immunogen	Recombinant hFSH beta sub-unit
Host	Rabbit
Clonality	Monoclonal
Isotype / Light Chain	IgG / Kappa
Mol. Weight of Antigen	22kDa
Cellular Localization	Secreted
Species Reactivity	Human
Positive Control	Anterior Pituitary

*Optimal dilution for a specific application should be determined.

Product Images for Recombinant FSH-beta (Follicle Stimulating Hormone-beta) Antibody



Formalin-fixed, paraffin-embedded human pituitary tissue stained with FSHbeta Recombinant Rabbit Monoclonal Antibody (FSHb/2033R).



SDS-PAGE Analysis of Purified FSH beta Recombinant Rabbit Monoclonal Antibody (FSHb/2033R). Confirmation of Integrity and Purity of the Antibody.

Specificity & Comments

This MAb reacts with a protein of 22kDa, identified as beta sub-unit of FSH. It does not cross react with the alpha sub-unit. Follicle stimulating hormone (FSH) is a hormone synthesized and secreted by gonadotrophs in the anterior pituitary gland. In the ovary, FSH stimulates the growth of immature Graafian follicles to maturation. As the follicle grows, it releases inhibin, which deactivates the FSH production. In men, FSH enhances the production of androgen-binding protein by the Sertoli cells of the testis and is critical for spermatogenesis. FSH and LH act synergistically in reproduction. FSH is a useful marker in the classification of pituitary tumors and the study of pituitary disease.

Limitations and Warranty

This antibody is available for research use only and is not approved for use in diagnosis. There are no warranties, expressed or implied, which extend beyond this description. Company is not liable for any personal injury or economic loss resulting from this product.

Supplied As

200ug/ml of Ab purified from Bioreactor Concentrate by Protein A/G. Prepared in 10mM PBS with 0.05% BSA & 0.05% azide. Also available WITHOUT BSA & azide at 1.0mg/ml.

Storage and Stability

Antibody with azide - store at 2 to 8 °C. Antibody without azide - store at -20 to -80 °C. Antibody is stable for 24 months. Non-hazardous. No MSDS required.

Research Areas

Signal Transduction
