

## FOLH1 / PSMA (Prostate Epithelial Marker) Antibody

Mouse Monoclonal Antibody [Clone FOLH1/3734]

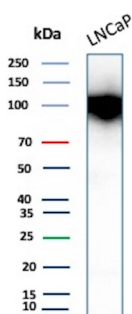
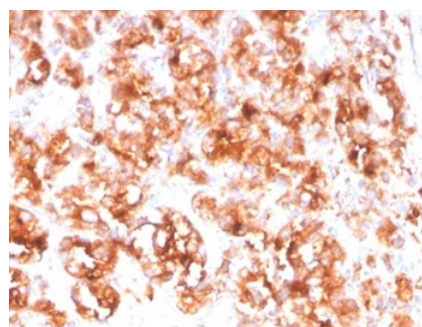
Catalog No	Format	Size
2346-MSM6-P0	Purified Ab with BSA and Azide at 200ug/ml	20 ug
2346-MSM6-P1	Purified Ab with BSA and Azide at 200ug/ml	100 ug
2346-MSM6-P1ABX	Purified Ab WITHOUT BSA and Azide at 1.0mg/ml	100 ug

Applications	Tested Dillution	Note
Immunohistochemistry (IHC)	1-2ug/ml	30 min at RT. Staining of formalin-fixed tissues requires heating tissue sections in 10mM Tris with 1mM EDTA, pH 9.0, for 45 min at 95°C followed by cooling at RT for 20 minutes
Western Blot (WB)	2-4ug/ml	

Product Details	
Clone	FOLH1/3734
Gene Name	FOLH1
Immunogen	A recombinant fragment (around aa 44-177) of human FOLH1 protein (exact sequence is proprietary)
Host	Mouse
Clonality	Monoclonal
Isotype / Light Chain	IgG1 / Kappa
Mol. Weight of Antigen	100kDa
Cellular Localization	Cell membrane, Cytoplasm
Species Reactivity	Cat, Cow, Dog, Horse, Human, Mouse
Positive Control	LNCap or HepG2 cells. Prostate Carcinoma. Human Brain.

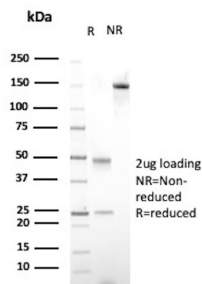
*\*Optimal dilution for a specific application should be determined.*

### Product Images for FOLH1 / PSMA (Prostate Epithelial Marker) Antibody

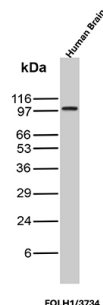


Formalin-fixed, paraffin-embedded human prostate carcinoma stained with FOLH1 (PSMA) Mouse Monoclonal Antibody (FOLH1/3734). HIER: Tris/EDTA, pH9.0, 45min. 2 °: HRP-polymer, 30min. DAB, 5min.

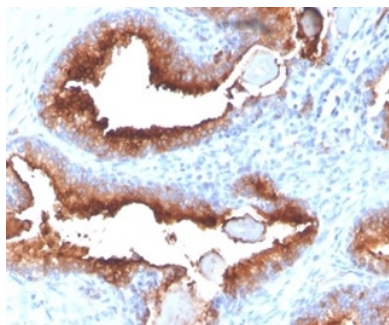
Western Blot Analysis of LNCap cell lysate using FOLH1 Mouse Monoclonal Antibody (FOLH1/3734)



SDS-PAGE Analysis of Purified Glutamate carboxypeptidase 2 Mouse Monoclonal Antibody (FOLH1/3734). Confirmation of Purity and Integrity of Antibody.



Western Blot Analysis of Human Brain tissue lysate using FOLH1 Mouse Monoclonal Antibody (FOLH1/3734)



Formalin-fixed, paraffin-embedded human prostate carcinoma stained with FOLH1 (PSMA) Mouse Monoclonal Antibody (FOLH1/3734). HIER: Tris/EDTA, pH9.0, 45min. 2 °: HRP-polymer, 30min. DAB, 5min.

### Specificity & Comments

Folate hydrolase 1 (FOLH1), also known as Prostate-specific membrane antigen (PSMA), is a type II transmembrane glycoprotein belonging to the M28 peptidase family. FOLH1 has two enzymatic activities, one as a prostate-specific integral membrane folate hydrolase and the other as a carboxypeptidase. In the prostate the protein is up-regulated in cancerous cells and is used as an effective diagnostic and prognostic indicator of prostate cancer.

### Supplied As

200ug/ml of Ab purified from Bioreactor Concentrate by Protein A/G. Prepared in 10mM PBS with 0.05% BSA & 0.05% azide. Also available WITHOUT BSA & azide at 1.0mg/ml.

### Storage and Stability

Antibody with azide - store at 2 to 8 °C. Antibody without azide - store at -20 to -80 °C. Antibody is stable for 24 months. Non-hazardous. No MSDS required.

### Research Areas

Cardiovascular

### Limitations and Warranty

This antibody is available for research use only and is not approved for use in diagnosis. There are no warranties, expressed or implied, which extend beyond this description. Company is not liable for any personal injury or economic loss resulting from this product.