

## Recombinant CELA3B / ELA3B (Pancreatic Function Marker) Antibody

Rabbit Monoclonal Antibody [Clone CELA3B/2809R]

Catalog No	Format	Size
23436-RBM12-P0	Purified Ab with BSA and Azide at 200ug/ml	20 ug
23436-RBM12-P1	Purified Ab with BSA and Azide at 200ug/ml	100 ug
23436-RBM12-P1ABX	Purified Ab WITHOUT BSA and Azide at 1.0mg/ml	100 ug

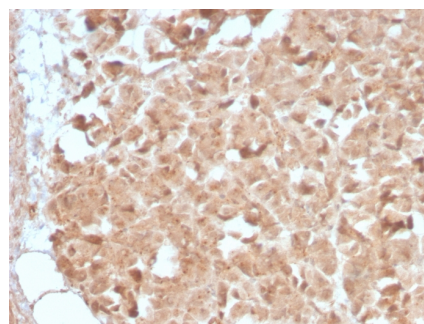
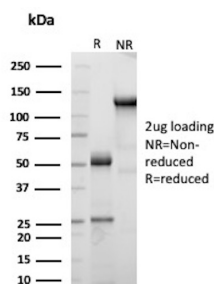
Applications	Tested Dillution	Note
Immunohistochemistry (IHC)	1-2ug/ml	30 min at RT. Staining of formalin-fixed tissues requires heating tissue sections in 10mM Tris with 1mM EDTA, pH 9.0, for 45 min at 95°C followed by cooling at RT for 20 minutes

### Product Details

Clone	CELA3B/2809R
Gene Name	CELA3B
Immunogen	Recombinant human CELA3B protein fragment (around aa 82-238) (exact sequence is proprietary)
Host	Rabbit
Clonality	Monoclonal
Isotype / Light Chain	IgG / Kappa
Mol. Weight of Antigen	17kDa
Species Reactivity	Human
Positive Control	Panc-28 or PANC1 cells. Pancreas.

\*Optimal dilution for a specific application should be determined.

### Product Images for Recombinant CELA3B / ELA3B (Pancreatic Function Marker) Antibody



SDS-PAGE Analysis of Purified Chymotrypsin-like elastase family member 3B Recombinant Rabbit Monoclonal Antibody (CELA3B/2809R). Confirmation of Purity and Integrity of Antibody.

Formalin-fixed, paraffin-embedded human Pancreas stained with CELA3B Rabbit Recombinant Monoclonal Antibody (CELA3B/2809R).

### Specificity & Comments

This MAb recognizes a protein of ~30kDa, identified as CELA3B (Chymotrypsin like elastase family member 3B). Elastases form a subfamily of serine proteases that hydrolyze many proteins in addition to elastin. Humans have six elastase genes which encode the structurally similar proteins elastase 1, 2, 2A, 2B, 3A, and 3B. Unlike other elastases, elastase 3B has little elastolytic activity. Like most of the human elastases, elastase 3B is secreted from the pancreas as a zymogen and, like other serine proteases such as trypsin, chymotrypsin and kallikrein; it has a digestive function in the intestine. Elastase 3B preferentially cleaves proteins after alanine residues. Elastase 3B may also function in the intestinal transport and metabolism of cholesterol. Both elastase 3A and elastase 3B have been referred to as protease E and as elastase 1, and excretion of this protein in fecal material is frequently used as a measure of pancreatic function.

---

### Limitations and Warranty

This antibody is available for research use only and is not approved for use in diagnosis. There are no warranties, expressed or implied, which extend beyond this description. Company is not liable for any personal injury or economic loss resulting from this product.

---

### Supplied As

200ug/ml of Ab Purified from Bioreactor Concentrate by Protein A/G. Prepared in 10mM PBS with 0.05% BSA & 0.05% azide. Also available WITHOUT BSA & azide at 1.0mg/ml.

---

### Storage and Stability

Antibody with azide - store at 2 to 8°C. Antibody without azide - store at -20 to -80°C. Antibody is stable for 24 months. Non-hazardous. No MSDS required.

---

### Research Areas

Cardiovascular

---