

CELA3B / ELA3B (Pancreatic Function Marker) Antibody

Mouse Monoclonal Antibody [Clone CELA3B/1218]

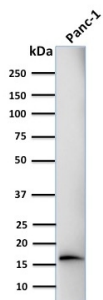
Catalog No	Format	Size
23436-MSM1-P0	Purified Ab with BSA and Azide at 200ug/ml	20 ug
23436-MSM1-P1	Purified Ab with BSA and Azide at 200ug/ml	100 ug
23436-MSM1-P1ABX	Purified Ab WITHOUT BSA and Azide at 1.0mg/ml	100 ug

Applications	Tested Dillution	Note
Western Blot (WB)	2-4ug/ml	

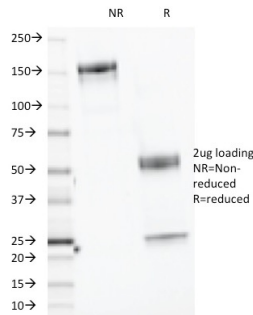
Product Details	
Clone	CELA3B/1218
Gene Name	CELA3B
Immunogen	Recombinant human CELA3B protein fragment (around aa 82-238) (exact sequence is proprietary)
Host	Mouse
Clonality	Monoclonal
Isotype / Light Chain	IgG1 / Kappa
Mol. Weight of Antigen	17kDa
Species Reactivity	Human
Positive Control	Panc-28 or PANC1 cells. Pancreas.

*Optimal dilution for a specific application should be determined.

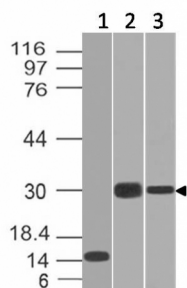
Product Images for CELA3B / ELA3B (Pancreatic Function Marker) Antibody



Western Blot Analysis of human PANC-1 cell lysate using CELA3B Monoclonal Antibody (CELA3B/1218)



SDS-PAGE Analysis of Purified CELA3B Monoclonal Antibody (CELA3B/1218). Confirmation of Purity and Integrity of Antibody.



Western Blot of Recombinant, Panc-28 and PANC1 cell lysates using CELA3B Monoclonal Antibody (CELA3B/1218).

Specificity & Comments

This MAb recognizes a protein of ~30kDa, identified as CELA3B (Chymotrypsin like elastase family member 3B). Elastases form a subfamily of serine proteases that hydrolyze many proteins in addition to elastin. Humans have six elastase genes which encode the structurally similar proteins elastase 1, 2, 2A, 2B, 3A, and 3B. Unlike other elastases, elastase 3B has little elastolytic activity. Like most of the human elastases, elastase 3B is secreted from the pancreas as a zymogen and, like other serine proteases such as trypsin, chymotrypsin and kallikrein; it has a digestive function in the intestine. Elastase 3B preferentially cleaves proteins after alanine residues. Elastase 3B may also function in the intestinal transport and metabolism of cholesterol. Both elastase 3A and elastase 3B have been referred to as protease E and as elastase 1, and excretion of this protein in fecal material is frequently used as a measure of pancreatic function in clinical assays.

Limitations and Warranty

This antibody is available for research use only and is not approved for use in diagnosis. There are no warranties, expressed or implied, which extend beyond this description. Company is not liable for any personal injury or economic loss resulting from this product.

Supplied As

200ug/ml of Ab Purified from Bioreactor Concentrate by Protein A/G. Prepared in 10mM PBS with 0.05% BSA & 0.05% azide. Also available WITHOUT BSA & azide at 1.0mg/ml.

Storage and Stability

Antibody with azide - store at 2 to 8°C. Antibody without azide - store at -20 to -80°C. Antibody is stable for 24 months. Non-hazardous. No MSDS required.

Research Areas

Cardiovascular
