

Fibronectin Antibody

Mouse Monoclonal Antibody [Clone SPM539]

Catalog No	Format	Size
2335-MSM1X-P0	Purified Ab with BSA and Azide at 200ug/ml	20 ug
2335-MSM1X-P1	Purified Ab with BSA and Azide at 200ug/ml	100 ug
2335-MSM1X-P1ABX	Purified Ab WITHOUT BSA and Azide at 1.0mg/ml	100 ug

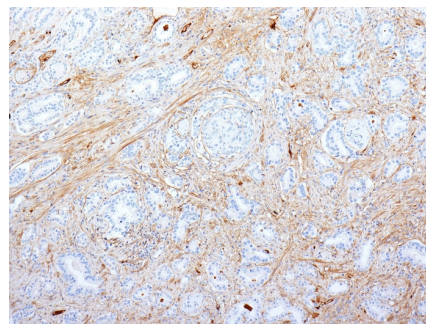
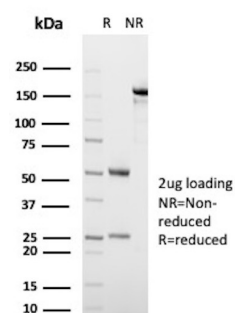
Applications	Tested Dillution	Note
Flow Cytometry (Flow)	1-2ug/million cells	
Immunofluorescence (IF)	1-3ug/ml	
Immunohistochemistry (IHC)	1-2ug/ml	30 min at RT. Staining of formalin-fixed tissues requires heating tissue sections in 10mM Tris with 1mM EDTA, pH 9.0, for 45 min at 95°C followed by cooling at RT for 20 minutes

Product Details

Clone	SPM539
Gene Name	Fn1
Immunogen	Human fibronectin Purified from serum by affinity chromatography on gelatin-sepharose
Host	Mouse
Clonality	Monoclonal
Isotype / Light Chain	IgG1 / Kappa
Mol. Weight of Antigen	220kDa (monomer); 440kDa (dimer)
Cellular Localization	Extracellular matrix, Extracellular space, Secreted
Species Reactivity	Human
Positive Control	SW156 cells. Kidney.

*Optimal dilution for a specific application should be determined.

Product Images for Fibronectin Antibody



SDS-PAGE Analysis of Purified Fibronectin Mouse Monoclonal Antibody (SPM539). Confirmation of Purity and Integrity of Antibody.

Formalin-fixed, paraffin-embedded human Pancreatic Adenocarcinoma stained with Fibronectin Monoclonal Antibody (SPM539).

Specificity & Comments

Fibronectin is a dimeric glycoprotein of 440kDa, which is present in cells, extracellular matrix, and blood. It possesses at least four binding sites for collagen, glycosaminoglycans, transglutaminase, and a cell surface receptor. Fibronectin is involved in cell adhesion, tissue organization, and wound healing. This MAb is directed against the peptide core and reacts with both the plasma and cellular forms of fibronectin. It blocks the fibronectin-mediated cell attachment not by disrupting the collagen-fibronectin interaction, but by interfering with the attachment of fibronectin to its receptor on the cell surface.

Limitations and Warranty

This antibody is available for research use only and is not approved for use in diagnosis. There are no warranties, expressed or implied, which extend beyond this description. Company is not liable for any personal injury or economic loss resulting from this product.

Supplied As

200ug/ml of Ab Purified from Bioreactor Concentrate by Protein A/G. Prepared in 10mM PBS with 0.05% BSA & 0.05% azide. Also available WITHOUT BSA & azide at 1.0mg/ml.

Storage and Stability

Antibody with azide - store at 2 to 8°C. Antibody without azide - store at -20 to -80°C. Antibody is stable for 24 months. Non-hazardous. No MSDS required.

Research Areas

Cardiovascular, Immunology, Articular Cartilage Extracellular Matrix, Cytokine Signaling, Infectious Disease, Lung Cancer, Mesenchymal Stem Cell Differentiation, Signal Transduction
