

VEGF-R1 / FLT-1 Antibody

Mouse Monoclonal Antibody [Clone FLT1/658]

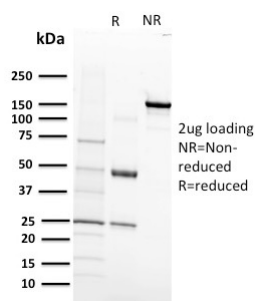
| Catalog No | Format | Size |
|-----------------|-----------------------------------|----------|
| 2321-MSM1-P0 | Purified Ab with BSA and Azide | 200ug/ml |
| 2321-MSM1-P1 | Purified Ab with BSA and Azide | 200ug/ml |
| 2321-MSM1-P1ABX | Purified Ab WITHOUT BSA and Azide | 1.0mg/ml |

| Applications | Tested Dillution |
|-------------------------|---------------------|
| Flow Cytometry (Flow) | 1-2ug/million cells |
| Immunofluorescence (IF) | 1-3ug/ml |

| Product Details | |
|------------------------|---|
| Clone | FLT1/658 |
| Gene Name | FLT1 |
| Immunogen | Recombinant human VEGF-R1 protein |
| Host | Mouse |
| Clonality | Monoclonal |
| Isotype / Light Chain | IgG1 / Kappa |
| Mol. Weight of Antigen | 150-180kDa |
| Cellular Localization | Cell membrane, Cytoplasm, Endosome, Secreted |
| Species Reactivity | Human |
| Positive Control | 293FT or A431 cells. Cerebellum or skin cancer. |

**Optimal dilution for a specific application should be determined.*

Product Images for VEGF-R1 / FLT-1 Antibody



SDS-PAGE Analysis of Purified VEGF-R1 Mouse Monoclonal Antibody (FLT1/658).
Confirmation of Integrity and Purity of Antibody.

Specificity & Comments

Three cell membrane receptor tyrosine kinases, Flt-1 (also designated VEGF-R1), Flk-1 (also designated VEGF-R2) and Flt-4, putatively involved in the growth of endothelial cells, are characterized by the presence of seven immunoglobulin-like sequences in their extracellular domain. These receptors exhibit high degrees of sequence relatedness to each other as well as lesser degrees of relatedness to the class III receptors including CSF-1/Fms, PDGR, SLFR/Kit and Flt-3/Flk-2. Two members of this receptor class, Flt-1 and Flk-1, have been shown to represent high affinity receptors for vascular endothelial growth factors (VEGFs). On the basis of structural similarity to Flt-1 and Flk-1, it has been speculated that Flt-4 might represent a third receptor for either VEGF or a VEGF-related ligand.

Research Areas

Cardiovascular, AKT Signaling, Angiogenesis, Endothelial Cell Marker, Signal Transduction

Known Applications & Suggested Dilutions

Flow Cytometry (1-2ug/million cells) | Immunofluorescence (1-2ug/ml) | Functional Studies (Order Ab without BSA & Azide) | Optimal dilution for a specific application should be determined.

Limitations and Warranty

This antibody is available for research use only and is not approved for use in diagnosis.

There are no warranties, expressed or implied, which extend beyond this description. Company is not liable for any personal injury or economic loss resulting from this product.

Supplied As

200ug/ml of Ab Purified from Bioreactor Concentrate by Protein A/G. Prepared in 10mM PBS with 0.05% BSA & 0.05% azide. Also available WITHOUT BSA & azide at 1.0mg/ml.

Storage and Stability

Antibody with azide - store at 2 to 8°C. Antibody without azide - store at -20 to -80°C. Antibody is stable for 24 months. Non-hazardous. No MSDS required.