

Recombinant Filaggrin (Keratinocyte Differentiation Marker) Antibody

Rabbit Monoclonal Antibody [Clone FLG/1957R]

Catalog No	Format	Size
2312-RBM7-P0	Purified Ab with BSA and Azide at 200ug/ml	20 ug
2312-RBM7-P1	Purified Ab with BSA and Azide at 200ug/ml	100 ug
2312-RBM7-P1ABX	Purified Ab WITHOUT BSA and Azide at 1.0mg/ml	100 ug

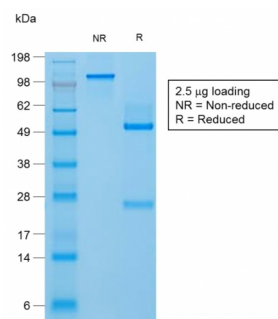
Applications	Tested Dillution	Note
Immunohistochemistry (IHC)	1-2ug/ml	30 min at RT. Staining of formalin-fixed tissues requires heating tissue sections in 10mM Tris with 1mM EDTA, pH 9.0, for 45 min at 95°C followed by cooling at RT for 20 minutes

Product Details

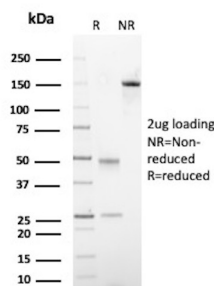
Clone	FLG/1957R
Gene Name	FLG
Immunogen	Recombinant human Filaggrin protein fragment (around aa 198-288) (exact sequence is proprietary)
Host	Rabbit
Clonality	Monoclonal
Isotype / Light Chain	IgG / Kappa
Mol. Weight of Antigen	26-45kDa (Processed); 350kDa (Profilaggrin)
Cellular Localization	Cytoplasmic granule
Species Reactivity	Human
Positive Control	U-251-MG cells. Skin.

**Optimal dilution for a specific application should be determined.*

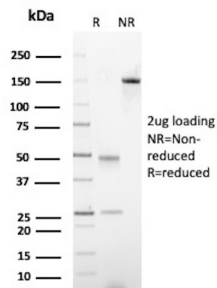
Product Images for Recombinant Filaggrin (Keratinocyte Differentiation Marker) Antibody



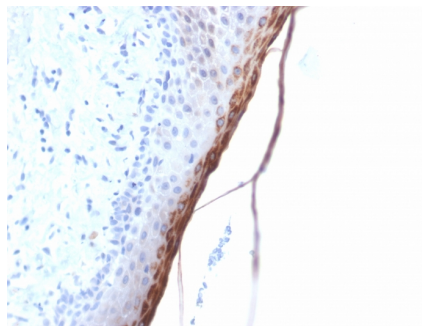
SDS-PAGE Analysis of Purified Filaggrin Rabbit Recombinant Monoclonal Antibody (FLG/1957R). Confirmation of Purity and Integrity of Antibody.



SDS-PAGE Analysis of Purified Filaggrin Recombinant Rabbit Monoclonal Antibody (FLG/1957R). Confirmation of Purity and Integrity of Antibody.



SDS-PAGE Analysis of Purified Filaggrin Recombinant Rabbit Monoclonal Antibody (FLG/1957R). Confirmation of Purity and Integrity of Antibody.



Formalin-fixed, paraffin-embedded human Skin stained with Filaggrin Rabbit Recombinant Monoclonal Antibody (FLG/1957R).

Specificity & Comments

Filaggrin is an intermediate filament-associated protein that aggregates keratin intermediate filaments in mammalian epidermis. It is initially synthesized as a polypeptide precursor, profilaggrin (consisting of multiple filaggrin units of 324 aa each), which is localized in keratohyalin granules, and is subsequently proteolytically processed into individual functional filaggrin molecules. Active filaggrin is present at a level of the epidermis where keratinocytes are in transition between the live nucleated granular layer and the anucleate cornified layer, suggesting that filaggrin aids in the terminal differentiation process by facilitating apoptotic machinery.

Limitations and Warranty

This antibody is available for research use only and is not approved for use in diagnosis. There are no warranties, expressed or implied, which extend beyond this description. Company is not liable for any personal injury or economic loss resulting from this product.

Supplied As

200ug/ml of Ab Purified from Bioreactor Concentrate by Protein A/G. Prepared in 10mM PBS with 0.05% BSA & 0.05% azide. Also available WITHOUT BSA & azide at 1.0mg/ml.

Storage and Stability

Antibody with azide - store at 2 to 8°C. Antibody without azide - store at -20 to -80°C. Antibody is stable for 24 months. Non-hazardous. No MSDS required.

Research Areas

Autophagy, Developmental Biology