

Recombinant Aldo-keto Reductase Family 1 Member B1 (Adrenal Marker) Antibody

Rabbit Monoclonal Antibody [Clone AKR1B1/7010R]

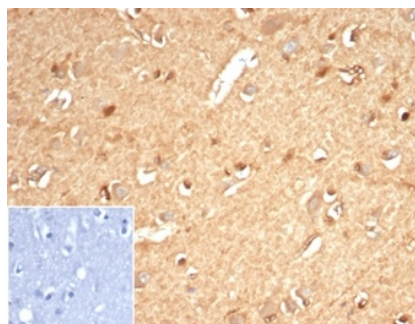
Catalog No	Format	Size
231-RBM4-P0	Purified Ab with BSA and Azide	200ug/ml
231-RBM4-P1	Purified Ab with BSA and Azide	200ug/ml
231-RBM4-P1ABX	Purified Ab WITHOUT BSA and Azide	1.0mg/ml.

Applications	Tested Dillution
Immunohistochemistry (IHC)	1-2ug/ml
Western Blot (WB)	2-4ug/ml

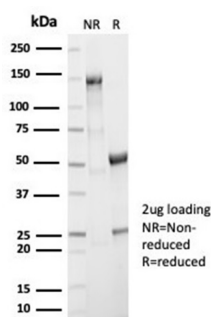
Product Details	
Clone	AKR1B1/7010R
Gene Name	AKR1B1
Immunogen	Recombinant human full-length AKR1B1 protein
Host	Rabbit
Clonality	Monoclonal
Isotype / Light Chain	IgG / Kappa
Mol. Weight of Antigen	37kDa
Cellular Localization	Cytoplasm
Species Reactivity	Human
Positive Control	Jurkat or Raji cells. Human kidney or colon carcinoma., MOLT4

**Optimal dilution for a specific application should be determined.*

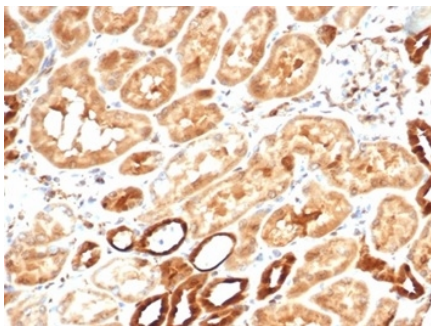
Product Images for Recombinant Aldo-keto Reductase Family 1 Member B1 (Adrenal Marker) Antibody



IHC analysis of formalin-fixed, paraffin-embedded human brain. Staining using AKR1B1/7010R at 2ug/ml in PBS for 30min RT. Inset: PBS instead of primary antibody; secondary only negative control.



SDS-PAGE Analysis of Purified AKR1B1 Rabbit Monoclonal Antibody (AKR1B1/7010R). Confirmation of Purity and Integrity of Antibody.



Formalin-fixed, paraffin-embedded human kidney stained with Aldose Reductase Recombinant Rabbit Monoclonal Antibody (AKR1B1/7009R). HIER: Tris/EDTA, pH9.0, 45min. 2°C: HRP-polymer, 30min. DAB, 5min.

Specificity & Comments

AKR1B1, also designated as aldose reductase, is a member of the aldo/keto reductase superfamily, which consists of more than 40 known enzymes and proteins. This protein catalyzes the reduction of a number of aldehydes, including the aldehyde form of glucose, and is thereby implicated in the development of diabetic complications by catalyzing the reduction of glucose to sorbitol. It has also been shown to have decreased expression in adrenocortical cancer, and possibly play a role in adrenal tumorigenesis. It has been suggested that AKR1B1 could be investigated as a marker of malignancy for adrenal tumor diagnosis.

Research Areas

Cardiovascular

Known Applications & Suggested Dilutions

Western Blot (1-2ug/ml) | ,Immunohistochemistry (Formalin-fixed) (1-2ug/ml for 30 minutes at RT),(Staining of formalin-fixed tissues requires heating tissue sections in 10mM Tris with 1mM EDTA, pH 9.0, for 45 min at 95 °C followed by cooling at RT for 20 minutes),Optimal dilution for a specific application should be determined.

Limitations and Warranty

This antibody is available for research use only and is not approved for use in diagnosis.

There are no warranties, expressed or implied, which extend beyond this description. Company is not liable for any personal injury or economic loss resulting from this product.

Supplied As

200ug/ml of Ab purified from Bioreactor Concentrate by Protein A/G. Prepared in 10mM PBS with 0.05% BSA & 0.05% azide. Also available WITHOUT BSA & azide at 1.0mg/ml.

Storage and Stability

Antibody with azide - store at 2 to 8 °C. Antibody without azide - store at -20 to -80 °C. Antibody is stable for 24 months. Non-hazardous. No MSDS required.
