

CD23 (Fc Epsilon RII) Antibody

Mouse Monoclonal Antibody [Clone FCER2/6892]

Catalog No	Format	Size
2208-MSM12-P0	Purified Ab with BSA and Azide at 200ug/ml	20 ug
2208-MSM12-P1	Purified Ab with BSA and Azide at 200ug/ml	100 ug
2208-MSM12-P1ABX	Purified Ab WITHOUT BSA and Azide at 1.0mg/ml	100 ug

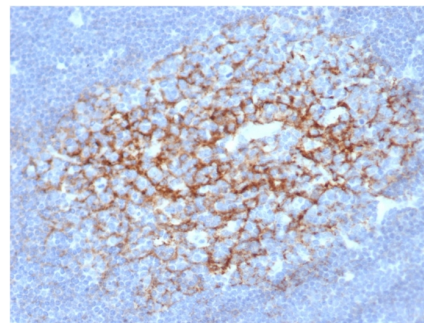
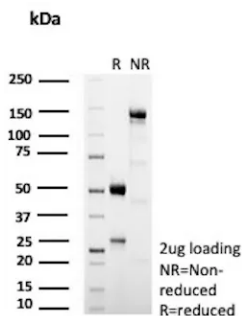
Applications	Tested Dillution	Note
Immunohistochemistry (IHC)	1-2ug/ml	30 min at RT. Staining of formalin-fixed tissues requires heating tissue sections in 10mM Tris with 1mM EDTA, pH 9.0, for 45 min at 95°C followed by cooling at RT for 20 minutes

Product Details

Clone	FCER2/6892
Gene Name	FCER2
Immunogen	Recombinant fragment (around aa 200-300) of human FCER2/CD23 protein (exact sequence is proprietary)
Host	Mouse
Clonality	Monoclonal
Isotype / Light Chain	IgG2b / Kappa
Mol. Weight of Antigen	37kDa (soluble form); 45kDa (membrane-bound form)
Cellular Localization	Cell membrane, Secreted
Species Reactivity	Human
Positive Control	Human lymph node or tonsil (IHC).

*Optimal dilution for a specific application should be determined.

Product Images for CD23 (Fc Epsilon RII) Antibody



SDS-PAGE Analysis of Purified Mouse Monoclonal Antibody (FCER2/6892). Confirmation of Purity and Integrity of Antibody.

IHC analysis of formalin-fixed, paraffin-embedded human lymph node. Membrane stained using FCER2/6892 at 2ug/ml in PBS for 30min RT. HIER: Tris/EDTA, pH9.0, 45min. 2 °: HRP-polymer, 30min. DAB, 5min.

Specificity & Comments

CD23 (FCE2) is a type II integral membrane glycoprotein that is expressed on mature B cells, monocytes, eosinophils, platelets and dendritic cells. CD23 is a low affinity IgE receptor that mediates IgE-dependent cytotoxicity and phagocytosis by macrophages and eosinophils. CD23 associates as an oligomer where cooperative binding of at least two lectin domains is required for high affinity IgE binding to CD23. It may play a role in antigen presentation by B cells by interacting with CD40. CD23 has been shown to be associated with the Fyn tyrosine kinase. The truncated molecule can be secreted, then function as a potent mitogenic growth factor. CD23 is expressed on a subpopulation of peripheral blood cells, B-lymphocytes and on EBV transformed B lymphoblastoid cell lines. CD23 is also detected in neoplastic cells from cases of B cell chronic lymphocytic leukemia and some cases on centroblastic/centrocytic lymphoma.

Limitations and Warranty

This antibody is available for research use only and is not approved for use in diagnosis. There are no warranties, expressed or implied, which extend beyond this description. Company is not liable for any personal injury or economic loss resulting from this product.

Supplied As

200ug/ml of Ab purified from Bioreactor Concentrate by Protein A/G. Prepared in 10mM PBS with 0.05% BSA & 0.05% azide. Also available WITHOUT BSA & azide at 1.0mg/ml.

Storage and Stability

Antibody with azide - store at 2 to 8 °C. Antibody without azide - store at -20 to -80 °C. Antibody is stable for 24 months. Non-hazardous. No MSDS required.

Research Areas

B Cell Markers, Complement System, Cytokine Signaling, Immunology, Mast Cell Marker, Signal Transduction
