

ALDH1A1 (Aldehyde Dehydrogenase 1A1) Antibody

Mouse Monoclonal Antibody [Clone ALDH1A1/1381]

Catalog No	Format	Size
216-MSM1-P0	Purified Ab with BSA and Azide at 200ug/ml	20 ug
216-MSM1-P1	Purified Ab with BSA and Azide at 200ug/ml	100 ug
216-MSM1-P1ABX	Purified Ab WITHOUT BSA and Azide at 1.0mg/ml	100 ug

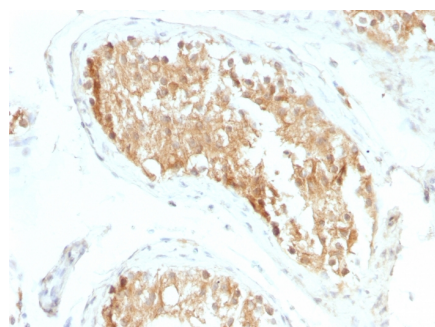
Applications	Tested Dillution	Note
Immunohistochemistry (IHC)	1-2ug/ml	30 min at RT. Staining of formalin-fixed tissues requires heating tissue sections in 10mM Tris with 1mM EDTA, pH 9.0, for 45 min at 95°C followed by cooling at RT for 20 minutes
Western Blot (WB)	2-4ug/ml	

Product Details

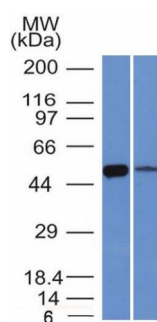
Clone	ALDH1A1/1381
Gene Name	ALDH1A1
Immunogen	Recombinant fragment (around aa 315-434) of human ALDH1A1 protein (exact sequence is proprietary).
Host	Mouse
Clonality	Monoclonal
Isotype / Light Chain	IgG1 / Kappa
Mol. Weight of Antigen	56kDa
Cellular Localization	Axon, Cell projection, Cytoplasm, Cytosol
Species Reactivity	Human, Rat
Positive Control	HepG2 or A549 cells. Human and Rat stomach, Colon or Testicular Carcinoma., K562, Liver, Lung, Brain

**Optimal dilution for a specific application should be determined.*

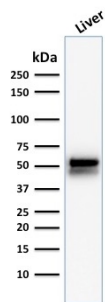
Product Images for ALDH1A1 (Aldehyde Dehydrogenase 1A1) Antibody



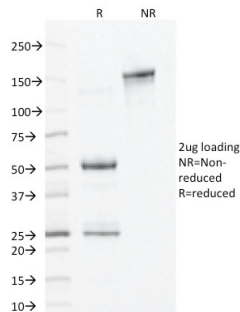
Formalin-fixed, paraffin-embedded human Testicular Carcinoma stained with ALDH1A1 Mouse Monoclonal Antibody (ALDH1A1/1381).



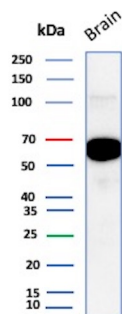
Western Blot of K562 and Lung lysate ALDH1A1 Mouse Monoclonal Antibody (ALDH1A1/1381).



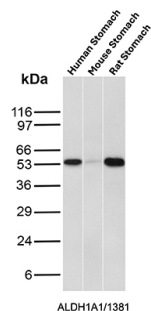
Western Blot Analysis of human Liver tissue lysate using ALDH1A1 Mouse Monoclonal Antibody (ALDH1A1/1381).



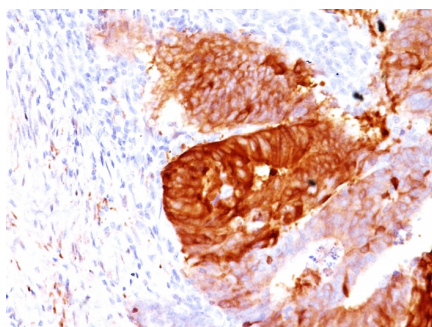
SDS-PAGE Analysis of Purified ALDH1A1 Mouse Monoclonal Antibody (ALDH1A1/1381). Confirmation of Integrity and Purity of Antibody.



Western Blot Analysis of Human Brain tissue lysate using ALDH1A1 Mouse Monoclonal Antibody (ALDH1A1/1381).



Western Blot Analysis of Human Stomach, Mouse Stomach and Rat Stomach tissue lysates using ALDH1A1 Mouse Monoclonal Antibody (ALDH1A1/1381).



Formalin-fixed, paraffin-embedded human Colon Carcinoma stained with ALDH1A1 Mouse Monoclonal Antibody (ALDH1A1/1381).

Specificity & Comments

ALDH1A1 belongs to the ALDH enzymes, a family of evolutionarily conserved enzymes comprised of 19 isoforms that are localized in the cytoplasm, mitochondria or nucleus. ALDH1A1 is predominantly expressed in the epithelium of testis, brain, eye, liver, kidney, as well as neural and hematopoietic stem cells. Reportedly, high ALDH1A1 expression is found in solitary fibrous tumor (SFT) and hemangiopericytoma (HPC), compared to meningiomas and synovial sarcomas. In combination with CD34, ALDH1A1 may be useful for the differentiation among SFT, HPC, meningioma, and synovial sarcoma.

Supplied As

200ug/ml of Ab Purified from Bioreactor Concentrate by Protein A/G. Prepared in 10mM PBS with 0.05% BSA & 0.05% azide. Also available WITHOUT BSA & azide at 1.0mg/ml.

Storage and Stability

Antibody with azide - store at 2 to 8°C. Antibody without azide - store at -20 to -80°C. Antibody is stable for 24 months. Non-hazardous. No MSDS required.

Research Areas

Signal Transduction

Limitations and Warranty

This antibody is available for research use only and is not approved for use in diagnosis. There are no warranties, expressed or implied, which extend beyond this description. Company is not liable for any personal injury or economic loss resulting from this product.