

Albumin (Transport Protein) Antibody

Mouse Monoclonal Antibody [Clone ALB/2356]

Catalog No	Format	Size
213-MSM6-P0	Purified Ab with BSA and Azide at 200ug/ml	20 ug
213-MSM6-P1	Purified Ab with BSA and Azide at 200ug/ml	100 ug
213-MSM6-P1ABX	Purified Ab WITHOUT BSA and Azide at 1.0mg/ml	100 ug

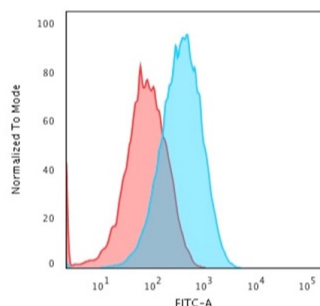
Applications	Tested Dillution	Note
Flow Cytometry (Flow)	1-2ug/million cells	
Immunofluorescence (IF)	1-3ug/ml	
Western Blot (WB)	2-4ug/ml	

Product Details

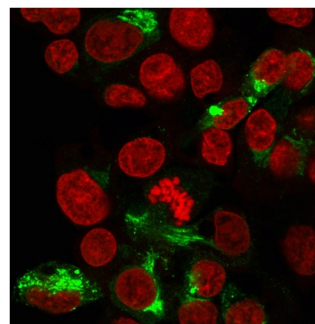
Clone	ALB/2356
Gene Name	ALB
Immunogen	Recombinant full-length human ALB protein
Host	Mouse
Clonality	Monoclonal
Isotype / Light Chain	IgG2a / Kappa
Mol. Weight of Antigen	66kDa
Cellular Localization	Secreted
Species Reactivity	Human
Positive Control	HePG2 cells. Human serum. Liver or Hepatocellular Carcinoma.

**Optimal dilution for a specific application should be determined.*

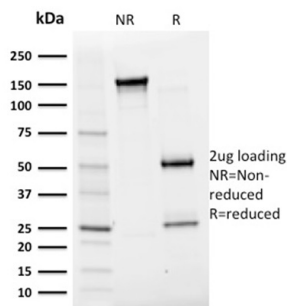
Product Images for Albumin (Transport Protein) Antibody



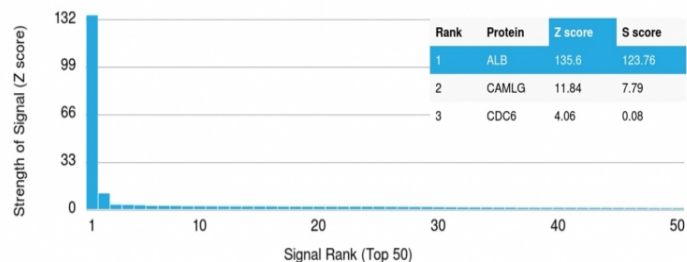
Flow Cytometric Analysis of paraformaldehyde-fixed HepG2 cells using Albumin Monospecific Mouse Monoclonal Antibody (ALB/2356) followed by goat anti-Mouse IgG-CF488 (Blue); Isotype Control (Red).



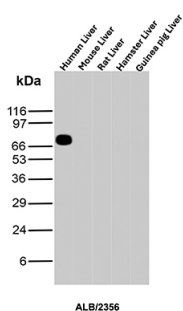
Immunofluorescent staining of paraformaldehyde-fixed HepG2 cells with Albumin Monospecific Mouse Monoclonal Antibody (ALB/2356) followed by goat anti-Mouse IgG-CF488 (Green). Nuclei are labelled with Reddot (Red).



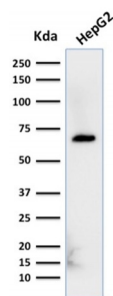
SDS-PAGE Analysis of Purified Albumin Monospecific Mouse Monoclonal Antibody (ALB/2356). Confirmation of Purity and Integrity of Antibody.



Analysis of Protein Array containing more than 19,000 full-length human proteins using Albumin Monospecific Mouse Monoclonal Antibody (ALB/2356). Z- and S- Score: The Z-score represents the strength of a signal that a monoclonal antibody (MAb) (in combination with a fluorescently-tagged anti-IgG secondary antibody) produces when binding to a particular protein on the HuProt™ array. Z-scores are described in units of standard deviations (SD, σ s) above the mean value of all signals generated on that array. If targets on HuProt™ are arranged in descending order of the Z-score, the S-score is the difference (also in units of SD, σ s) between the Z-score. S-score therefore represents the relative target specificity of a MAb to its intended target. A MAb is considered to be specific to its intended target, if the MAb has an S-score of at least 2.5. For example, if a MAb binds to protein X with a Z-score of 43 and to protein Y with a Z-score of 14, then the S-score for the binding of that MAb to protein X is equal to 29.



Western blot analysis of Human Liver, Mouse Liver, Rat Liver, Hamster Liver and Guinea pig Liver tissue lysates using Albumin Mouse Monoclonal Antibody (ALB/2356).



Western Blot Analysis of HepG2 cell lysate using Albumin Monospecific Mouse Monoclonal Antibody (ALB/2356).

Specificity & Comments

This MAb is Monospecific to albumin and shows no significant cross-reaction with other human proteins. Albumin is a soluble, monomeric protein, which comprises about one half of the blood serum protein. Albumin functions primarily as a carrier protein for steroids, fatty acids, and thyroid hormones and plays a role in stabilizing extracellular fluid volume. Albumin is synthesized in the liver as prealbumin, which has an N-terminal peptide that is removed before the nascent protein is released from the rough endoplasmic reticulum. The product, proalbumin, is in turn cleaved in the Golgi vesicles to produce the secreted form of albumin.

Supplied As

200ug/ml of Ab Purified from Bioreactor Concentrate by Protein A/G. Prepared in 10mM PBS with 0.05% BSA & 0.05% azide. Also available WITHOUT BSA & azide at 1.0mg/ml.

Storage and Stability

Antibody with azide - store at 2 to 8°C. Antibody without azide - store at -20 to -80°C. Antibody is stable for 24 months. Non-hazardous. No MSDS required.

Research Areas

Cardiovascular, Complement System, Stem Cell Differentiation

Limitations and Warranty

This antibody is available for research use only and is not approved for use in diagnosis. There are no warranties, expressed or implied, which extend beyond this description. Company is not liable for any personal injury or economic loss resulting from this product.