

Recombinant ALCAM (Activated Leukocyte Cell Adhesion Molecule) / CD166 Antibody

Mouse Monoclonal Antibody [Clone rMOG/07]

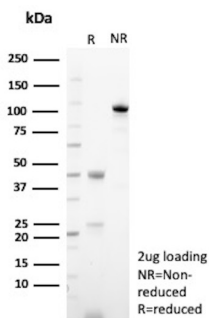
Catalog No	Format	Size
214-MSM3-P0	Purified Ab with BSA and Azide at 200ug/ml	20 ug
214-MSM3-P1	Purified Ab with BSA and Azide at 200ug/ml	100 ug
214-MSM3-P1ABX	Purified Ab WITHOUT BSA or Azide at 1.0mg/ml	100 ug

Applications	Tested Dillution	Note
Immunohistochemistry (IHC)	1-2ug/ml	30 min at RT. Staining of formalin-fixed tissues requires heating tissue sections in 10mM Tris with 1mM EDTA, pH 9.0, for 45 min at 95°C followed by cooling at RT for 20 minutes

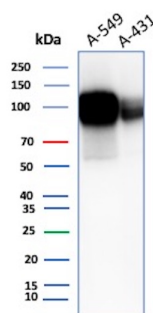
Product Details	
Clone	rMOG/07
Immunogen	Recombinant full-length human CD166 protein
Host	Mouse
Clonality	Monoclonal
Isotype / Light Chain	IgG2b / Kappa
Mol. Weight of Antigen	65.1kDa
Cellular Localization	Axon, Cell membrane, Cell projection, Dendrite, Secreted
Species Reactivity	Human
Positive Control	Human tonsil, spleen, colon or parathyroid gland.

*Optimal dilution for a specific application should be determined.

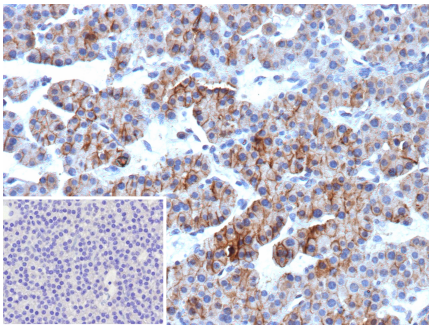
Product Images for Recombinant ALCAM (Activated Leukocyte Cell Adhesion Molecule) / CD166 Antibody



SDS-PAGE Analysis of Purified ALCAM / CD166 Recombinant Mouse Monoclonal Antibody (rMOG/07). Confirmation of Purity and Integrity of Antibody.



Western blot analyses of A-549 and A-431 cell lysates using CD166 Recombinant Mouse Monoclonal Antibody (rMOG/07).



Formalin-fixed, paraffin-embedded human parathyroid gland stained with ALCAM / CD166 Recombinant Mouse Monoclonal Antibody (rMOG/07). Inset: PBS instead of primary antibody; secondary only negative control.

Specificity & Comments

Activated leukocyte cell adhesion molecule (ALCAM), expressed on activated leukocytes, T cells, B cells and monocytes, is a member of the immunoglobulin superfamily (IgSF) and identified as a CD6 ligand. CD6 is a type I membrane protein in the scavenger receptor cysteine rich protein superfamily that acts in T cell adhesion and costimulation. ALCAM mediates thymocyte-thymic epithelial cell adhesion via homophilic (ALCAM-ALCAM) and heterophilic (ALCAM-CD6) interactions involving a previously undescribed protein-protein interaction between a member of the scavenger receptor cysteine rich protein superfamily and the immunoglobulin superfamily.

Limitations and Warranty

This antibody is available for research use only and is not approved for use in diagnosis. There are no warranties, expressed or implied, which extend beyond this description. Company is not liable for any personal injury or economic loss resulting from this product.

Supplied As

200ug/ml of Ab produced in a mammalian-based expression system. Prepared in 10mM PBS with 0.05% BSA & 0.05% azide. Also available WITHOUT BSA & azide at 1.0mg/ml.

Storage and Stability

Antibody with azide - store at 2 to 8 °C. Antibody without azide - store at -20 to -80 °C. Antibody is stable for 24 months. Non-hazardous. No MSDS required.