

## Recombinant Albumin (Transport Protein) Antibody

Mouse Monoclonal Antibody [Clone rALB/6414]

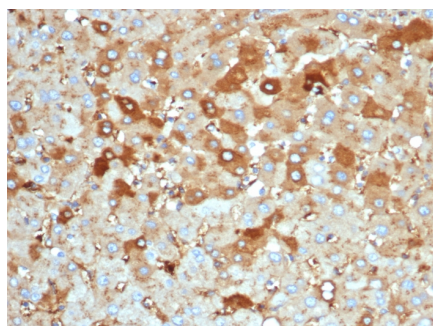
Catalog No	Format	Size
213-MSM14-P0	Purified Ab with BSA and Azide	200ug/ml
213-MSM14-P1	Purified Ab with BSA and Azide	200ug/ml
213-MSM14-P1ABX	Purified Ab WITHOUT BSA and Azide	1.0mg/ml

Applications	Tested Dillution
Immunofluorescence (IF)	1-3ug/ml
Immunohistochemistry (IHC)	1-2ug/ml
Western Blot (WB)	2-4ug/ml

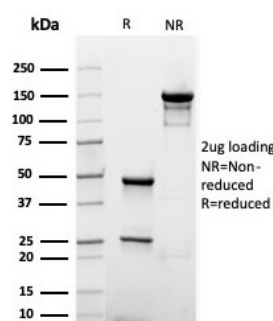
Product Details	
Clone	rALB/6414
Gene Name	ALB
Immunogen	Recombinant full-length human ALB protein
Host	Mouse
Clonality	Monoclonal
Isotype / Light Chain	IgG1 / Kappa
Mol. Weight of Antigen	66kDa
Cellular Localization	Secreted
Species Reactivity	Human
Positive Control	Human serum. Human liver or hepatocellular carcinoma.

*\*Optimal dilution for a specific application should be determined.*

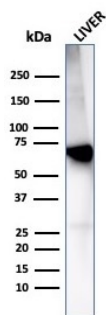
### Product Images for Recombinant Albumin (Transport Protein) Antibody



Formalin-fixed, paraffin-embedded human liver carcinoma in colon stained with Albumin Recombinant Mouse Monoclonal Antibody (rALB/6414).



SDS-PAGE Analysis of Purified Albumin Recombinant Mouse Monoclonal Antibody (rALB/6414). Confirmation of Purity and Integrity of Antibody.



Western blot analysis of human liver tissue lysate using Albumin Recombinant Mouse Monoclonal Antibody (rALB/6414).

### Specificity & Comments

This MAb is absolutely specific to albumin and does not show any significant cross-reaction with other human proteins. Albumin is a soluble, monomeric protein, which comprises about one half of the blood serum protein. Albumin functions primarily as a carrier protein for steroids, fatty acids, and thyroid hormones and plays a role in stabilizing extracellular fluid volume. Albumin is synthesized in the liver as prealbumin, which has an N-terminal peptide that is removed before the nascent protein is released from the rough endoplasmic reticulum. The product, proalbumin, is in turn cleaved in the Golgi vesicles to produce the secreted form of albumin.

### Research Areas

Cardiovascular, Complement System, Stem Cell Differentiation

### Known Applications & Suggested Dilutions

ELISA (For coating, order Ab without BSA) | ,Immunofluorescence (1-2ug/ml) | Western Blot (1-2ug/ml) | ,Immunohistochemistry (Formalin-fixed) (1-2ug/ml for 30 minutes at RT),(Staining of formalin-fixed tissues requires heating tissue sections in 10mM Tris with 1mM EDTA, pH 9.0, for 45 min at 95 &degC followed by cooling at RT for 20 minutes),Optimal dilution for a specific application should be determined.

### Limitations and Warranty

This antibody is available for research use only and is not approved for use in diagnosis.

There are no warranties, expressed or implied, which extend beyond this description. Company is not liable for any personal injury or economic loss resulting from this product.

### Supplied As

200ug/ml of Ab purified from Bioreactor Concentrate by Protein A/G. Prepared in 10mM PBS with 0.05% BSA & 0.05% azide. Also available WITHOUT BSA & azide at 1.0mg/ml.

### Storage and Stability

Antibody with azide - store at 2 to 8 °C. Antibody without azide - store at -20 to -80 °C. Antibody is stable for 24 months. Non-hazardous. No MSDS required.