

Recombinant Estrogen Receptor, alpha (Marker of Estrogen Dependence) Antibody

Rabbit Monoclonal Antibody [Clone ESR1/6811R]

Catalog No	Format	Size
2099-RBM41-P0	Purified Ab with BSA and Azide at 200ug/ml	20 ug
2099-RBM41-P1	Purified Ab with BSA and Azide at 200ug/ml	100 ug
2099-RBM41-P1ABX	Purified Ab WITHOUT BSA and Azide at 1.0mg/ml	100 ug

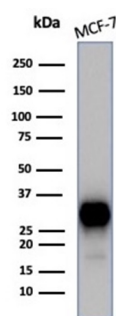
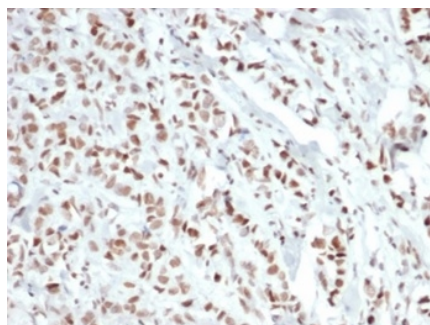
Applications	Tested Dillution	Note
Immunohistochemistry (IHC)	1-2ug/ml	30 min at RT. Staining of formalin-fixed tissues requires heating tissue sections in 10mM Tris with 1mM EDTA, pH 9.0, for 45 min at 95°C followed by cooling at RT for 20 minutes
Western Blot (WB)	2-4ug/ml	

Product Details

Clone	ESR1/6811R
Gene Name	ESR1
Immunogen	Recombinant fragment corresponding to C-terminus of human ER-?
Host	Rabbit
Clonality	Monoclonal
Isotype / Light Chain	IgG / Kappa
Mol. Weight of Antigen	~67kDa
Cellular Localization	Cell membrane, Cytoplasm, Golgi apparatus, Nucleus
Species Reactivity	Human
Positive Control	Human breast or endometrial carcinoma.

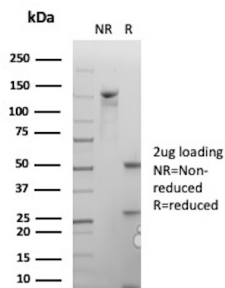
*Optimal dilution for a specific application should be determined.

Product Images for Recombinant Estrogen Receptor, alpha (Marker of Estrogen Dependence) Antibody

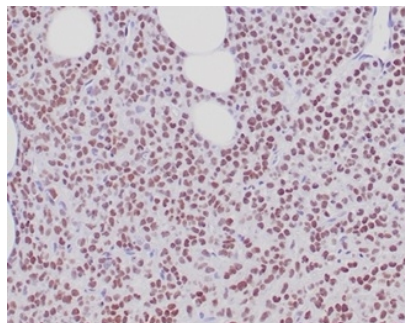


Formalin fixed paraffin embedded human breast carcinoma stained with ER, alpha Rabbit Recombinant Monoclonal Antibody (ESR1/6811R). HIER: Tris/EDTA, pH9.0, 45min. 2°C: HRP-polymer, 30min. DAB, 5min.

Western blot analysis of MCF-7 cell lysate using ER, alpha Rabbit Recombinant Monoclonal Antibody (ESR1/6811R).



SDS-PAGE Analysis of Purified ESR1 Recombinant Rabbit Monoclonal Antibody(ESR1/6811R). Confirmation of Purity and Integrity of Antibody.



Formalin fixed paraffin embedded human breast carcinoma stained with ER, alpha Rabbit Recombinant Monoclonal Antibody (ESR1/6811R). HIER: Tris/EDTA, pH9.0, 45min. 2°C: HRP-polymer, 30min. DAB, 5min.

Specificity & Comments

Recognizes a protein of 67kDa, which is identified as estrogen receptor (ER) alpha. The ER gene consists of more than 140kb of genomic DNA divided into 8 exons, being translated into a protein with six functionally discrete domains, labeled A through F. This antibody strongly stains the nucleus of epithelial cells in breast carcinomas. The ER is an important regulator of growth and differentiation in the mammary gland. Presence of ER in breast tumors indicates an increased likelihood of response to antiestrogen (e.g. tamoxifen) therapy.

Supplied As

200ug/ml of Ab purified by Protein A/G. Prepared in 10mM PBS with 0.05% BSA & 0.05% azide. Also available WITHOUT BSA & azide at 1.0mg/ml.

Storage and Stability

Antibody with azide - store at 2 to 8 °C. Antibody without azide - store at -20 to -80 °C. Antibody is stable for 24 months. Non-hazardous. No MSDS required.

Research Areas

Breast Cancer, Cardiovascular, Infectious Disease, Ovarian Cancer, Signal Transduction, Transcription Factors

Limitations and Warranty

This antibody is available for research use only and is not approved for use in diagnosis. There are no warranties, expressed or implied, which extend beyond this description. Company is not liable for any personal injury or economic loss resulting from this product.