

## Recombinant Estrogen Receptor, alpha (Marker of Estrogen Dependence) Antibody

Rabbit Monoclonal Antibody [Clone ESR1/2299R]

Catalog No	Format	Size
2099-RBM17-P0	Purified Ab with BSA and Azide at 200ug/ml	20 ug
2099-RBM17-P1	Purified Ab with BSA and Azide at 200ug/ml	100 ug
2099-RBM17-P1ABX	Purified Ab WITHOUT BSA and Azide at 1.0mg/ml	100 ug

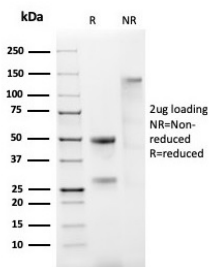
Applications	Tested Dillution	Note
Flow Cytometry (Flow)	1-2ug/million cells	
Immunohistochemistry (IHC)	1-2ug/ml	30 min at RT. Staining of formalin-fixed tissues requires heating tissue sections in 10mM Tris with 1mM EDTA, pH 9.0, for 45 min at 95°C followed by cooling at RT for 20 minutes
Western Blot (WB)	2-4ug/ml	

### Product Details

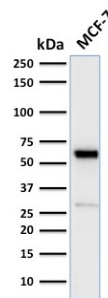
<b>Clone</b>	ESR1/2299R
<b>Gene Name</b>	ESR1
<b>Immunogen</b>	Recombinant full-length human Estrogen Receptor alpha protein
<b>Host</b>	Rabbit
<b>Clonality</b>	Monoclonal
<b>Isotype / Light Chain</b>	IgG / Kappa
<b>Mol. Weight of Antigen</b>	~67kDa
<b>Cellular Localization</b>	Cell membrane, Cytoplasm, Golgi apparatus, Nucleus
<b>Species Reactivity</b>	Human
<b>Positive Control</b>	MCF-7 cells. Human breast or endometrial carcinoma.

\*Optimal dilution for a specific application should be determined.

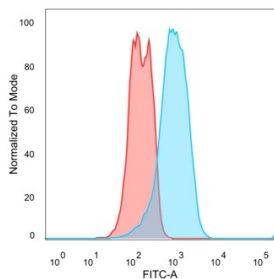
### Product Images for Recombinant Estrogen Receptor, alpha (Marker of Estrogen Dependence) Antibody



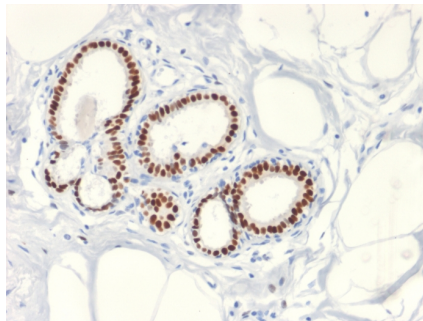
SDS-PAGE Analysis Purified ER, alpha Rabbit Recombinant Monoclonal Antibody (ESR1/2299R). Confirmation of Purity and Integrity of Antibody.



SDS-PAGE Analysis of Purified ER, alpha Rabbit Recombinant Monoclonal Antibody (ESR1/2299R). Confirmation of Purity and Integrity of Antibody.



Flow cytometric analysis of PFA-fixed MCF-7 cells. Estrogen Receptor, alpha Rabbit Recombinant MAb (ESR1/2299R) followed by goat anti-mouse IgG-CF488 (blue); isotype control (red).



Formalin fixed paraffin embedded human breast carcinoma stained with ER, alpha Rabbit Recombinant Monoclonal Antibody (ESR1/2299R).

### Specificity & Comments

This MAb is specific to ER alpha and shows minimal cross-reaction with other members of the family. ER is an important regulator of growth and differentiation in the mammary gland. Presence of ER in breast tumors indicates an increased likelihood of response to anti-estrogen (e.g. tamoxifen) therapy. This MAb is excellent for staining of formalin-fixed, paraffin-embedded breast carcinomas.

### Supplied As

200ug/ml of Ab purified by Protein A/G. Prepared in 10mM PBS with 0.05% BSA & 0.05% azide. Also available WITHOUT BSA & azide at 1.0mg/ml.

### Storage and Stability

Antibody with azide - store at 2 to 8 °C. Antibody without azide - store at -20 to -80 °C. Antibody is stable for 24 months. Non-hazardous. No MSDS required.

### Research Areas

Breast Cancer, Cardiovascular, Infectious Disease, Ovarian Cancer, Signal Transduction, Transcription Factors

### Limitations and Warranty

This antibody is available for research use only and is not approved for use in diagnosis. There are no warranties, expressed or implied, which extend beyond this description. Company is not liable for any personal injury or economic loss resulting from this product.