

Recombinant AKT1 (Prognostic Marker for Neuroendocrine Tumors) Antibody

Rabbit Monoclonal Antibody [Clone AKT1/3898R]

Catalog No	Format	Size
207-RBM6-P0	Purified Ab with BSA and Azide at 200ug/ml	20 ug
207-RBM6-P1	Purified Ab with BSA and Azide at 200ug/ml	100 ug
207-RBM6-P1ABX	Purified Ab WITHOUT BSA and Azide at 1.0mg/ml	100 ug

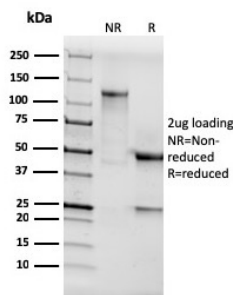
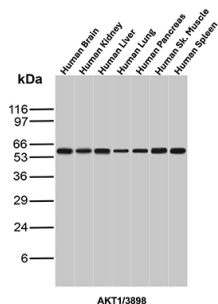
Applications	Tested Dillution	Note
Western Blot (WB)	2-4ug/ml	

Product Details

Clone	AKT1/3898R
Gene Name	AKT1
Immunogen	Recombinant fragment of human AKT1 protein (around aa 85-189) (exact sequence is proprietary)
Host	Rabbit
Clonality	Monoclonal
Isotype / Light Chain	IgG / Kappa
Mol. Weight of Antigen	62kDa
Cellular Localization	Cell membrane, Cytoplasm, Nucleus
Species Reactivity	Human
Positive Control	MCF-7 cells. PDGF-treated NIH/3T3 cells. HeLa. Human Brain, Human Kidney, Human Liver, Human Lung, Human Pancreas, Human Sk. Muscle or Human Spleen.

*Optimal dilution for a specific application should be determined.

Product Images for Recombinant AKT1 (Prognostic Marker for Neuroendocrine Tumors) Antibody



Western blot analysis of Human Brain, Human Kidney, Human Liver, Human Lung, Human Pancreas, Human Sk. Muscle and Human Spleen tissue lysates using AKT1 Recombinant Rabbit Monoclonal Antibody (AKT1/3898R).

SDS-PAGE Analysis of Purified AKT1 Recombinant Rabbit Monoclonal Antibody (AKT1/3898R). Confirmation of Integrity and Purity of Antibody.

Specificity & Comments

Recognizes a protein of 62kDa, which is identified as AKT1. The serine/threonine kinase Akt family contains several members, including Akt1 (also designated PKB or RacPK), Akt2 (also designated PKB tyrosine residues 740 and 751, which bind the subunit of the phosphatidylinositol 3-kinase (PI 3-kinase) complex. Activation of Akt1 by insulin or insulin-growth factor-1(IGF-1) results in phosphorylation of both Thr 308 and Ser 473. Akt proteins become phosphorylated and activated in insulin/IGF-1-stimulated cells by an upstream kinase(s), and the activation of Akt1 and Akt2 is inhibited by the PI kinase inhibitor wortmannin.

Limitations and Warranty

This antibody is available for research use only and is not approved for use in diagnosis. There are no warranties, expressed or implied, which extend beyond this description. Company is not liable for any personal injury or economic loss resulting from this product.

Supplied As

200ug/ml of Ab purified from Bioreactor Concentrate by Protein A/G. Prepared in 1mM PBS with 0.05% BSA & 0.05% azide. Also available WITHOUT BSA & azide at 1.0mg/ml.

Storage and Stability

Antibody with azide - store at 2 to 8°C. Antibody without azide - store at -20 to -80°C. Antibody is stable for 24 months. Non-hazardous. No MSDS required.

Research Areas

AKT Signaling, BBB VCAM-1 Signaling, Breast Cancer, Cardiovascular, Colon Cancer, Cytokine Signaling, Developmental Biology, Immunology, Infectious Disease, Lung Cancer, MAPK Signaling, Neuroinflammation, Nuclear Marker, Ovarian Cancer, Signal Transduction, Transcription Factors
