

HER-2 / c-erbB-2 / neu / CD340 Antibody

Mouse Monoclonal Antibody [Clone ERBB2/3257]

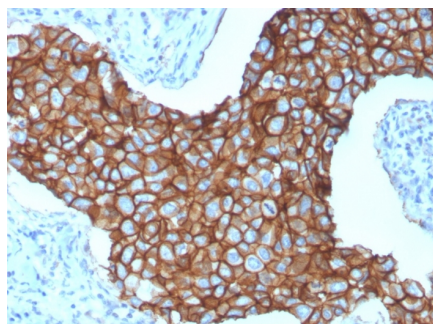
| Catalog No | Format | Size |
|------------------|-----------------------------------|----------|
| 2064-MSM27-P0 | Purified Ab with BSA and Azide | 200ug/ml |
| 2064-MSM27-P1 | Purified Ab with BSA and Azide | 200ug/ml |
| 2064-MSM27-P1ABX | Purified Ab WITHOUT BSA and Azide | 1.0mg/ml |

| Applications | Tested Dillution |
|----------------------------|---------------------|
| Flow Cytometry (Flow) | 1-2ug/million cells |
| Immunohistochemistry (IHC) | 1-2ug/ml |

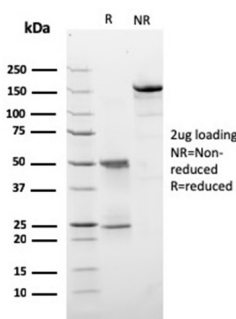
| Product Details | |
|------------------------|--|
| Clone | ERBB2/3257 |
| Gene Name | ERBB2 |
| Immunogen | Recombinant human HER-2 protein fragment (around aa 311-462) (exact sequence is proprietary) |
| Host | Mouse |
| Clonality | Monoclonal |
| Isotype / Light Chain | IgG2b / Kappa |
| Mol. Weight of Antigen | 185kDa |
| Cellular Localization | Cell membrane, Cytoplasm, Early endosome, Nucleus, Perinuclear region |
| Species Reactivity | Human |
| Positive Control | SKBR-3 cells. Human breast carcinoma tissue (IHC). |

**Optimal dilution for a specific application should be determined.*

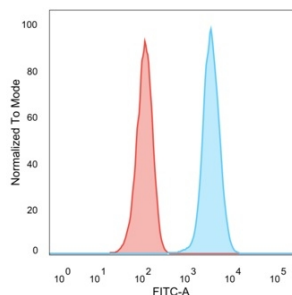
Product Images for HER-2 / c-erbB-2 / neu / CD340 Antibody



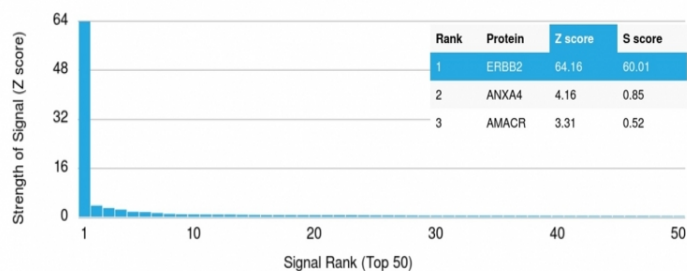
Formalin-fixed, paraffin-embedded human breast carcinoma stained with HER2 Mouse Monospecific Monoclonal Antibody (ERBB2/3257).



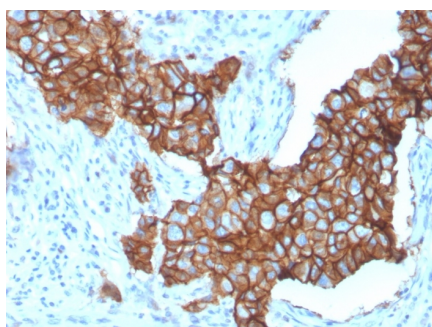
SDS-PAGE Analysis Purified HER-2 Monospecific Mouse Monoclonal Antibody (ERBB2/3257). Confirmation of Purity and Integrity of Antibody.



Flow cytometric analysis of PFA-fixed MCF-7 cells using HER-2 Recombinant Rabbit Monoclonal Antibody (ERBB2/3257) followed by goat anti-rabbit IgG-CF488 (red); isotype control (blue).



Analysis of Protein Array containing more than 19,000 full-length human proteins using HER-2 Monospecific Mouse Monoclonal Antibody (ERBB2/3257). Z- and S- Score: The Z-score represents the strength of a signal that a monoclonal antibody (MAb) (in combination with a fluorescently-tagged anti-IgG secondary antibody) produces when binding to a particular protein on the HuProt™ array. Z-scores are described in units of standard deviations (SD's) above the mean value of all signals generated on that array. If targets on HuProt™ are arranged in descending order of the Z-score, the S-score is the difference (also in units of SD's) between the Z-score. S-score therefore represents the relative target specificity of a MAb to its intended target. A MAb is considered to be specific to its intended target, if the MAb has an S-score of at least 2.5. For example, if a MAb binds to protein X with a Z-score of 43 and to protein Y with a Z-score of 14, then the S-score for the binding of that MAb to protein X is equal to 29.



Formalin-fixed, paraffin-embedded human breast carcinoma stained with HER-2 Monospecific Mouse Monoclonal Antibody (ERBB2/3257).

Specificity & Comments

Recognizes a protein of 185kDa, which is identified as c-erbB-2/HER-2/neu. Its epitope is localized in the extracellular domain. C-erbB-2/HER-2 is a member of the EGFR family. This MAb is specific and shows minimal cross-reaction with other members of the EGFR-family. Receptors of this family are located on the plasma membrane and consist of an extracellular ligand-binding domain that is connected to a large intracellular domain by a single transmembrane sequence. c-erbB-2/HER-2 protein is over-expressed in a variety of carcinomas especially those of breast and ovary.

Research Areas

Breast Cancer, Cardiovascular, Developmental Biology, AKT Signaling, Bladder Cancer, Infectious Disease, Signal Transduction, Transcription Factors

Known Applications & Suggested Dilutions

Flow Cytometry (1-2ug/million cells) | Immunohistochemistry (Formalin-fixed) (1-2ug/ml for 30 minutes at RT), (Staining of formalin-fixed tissues requires heating tissue sections in 10mM Tris with 1mM EDTA, pH 9.0, for 45 min at 95 °C followed by cooling at RT for 20 minutes), Optimal dilution for a specific application should be determined.

Limitations and Warranty

This antibody is available for research use only and is not approved for use in diagnosis.

There are no warranties, expressed or implied, which extend beyond this description. Company is not liable for any personal injury or economic loss resulting from this product.

Supplied As

200ug/ml of Ab purified from Bioreactor Concentrate by Protein A/G. Prepared in 10mM PBS with 0.05% BSA & 0.05% azide. Also available WITHOUT BSA & azide at 1.0mg/ml.

Storage and Stability

Antibody with azide - store at 2 to 8 °C. Antibody without azide - store at -20 to -80 °C. Antibody is stable for 24 months. Non-hazardous. No MSDS required.