

## NSE gamma (Neuron Specific Enolase, gamma) (Neuroendocrine Marker) Antibody

Mouse Monoclonal Antibody [Clone ENO2/1375]

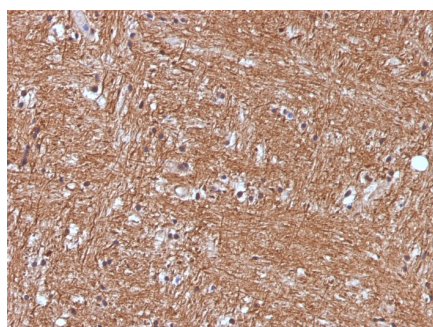
Catalog No	Format	Size
2026-MSM1-P0	Purified Ab with BSA and Azide at 200ug/ml	20 ug
2026-MSM1-P1	Purified Ab with BSA and Azide at 200ug/ml	100 ug
2026-MSM1-P1ABX	Purified Ab WITHOUT BSA and Azide at 1.0mg/ml	100 ug

Applications	Tested Dillution	Note
Immunohistochemistry (IHC)	1-2ug/ml	30 min at RT. Staining of formalin-fixed tissues requires heating tissue sections in 10mM Tris with 1mM EDTA, pH 9.0, for 45 min at 95°C followed by cooling at RT for 20 minutes
Western Blot (WB)	2-4ug/ml	

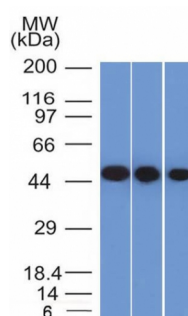
Product Details	
Clone	ENO2/1375
Gene Name	ENO2
Immunogen	A synthetic peptide of human NSE gamma (around aa416-433) (exact sequence is proprietary)
Host	Mouse
Clonality	Monoclonal
Isotype / Light Chain	IgG2b / Kappa
Mol. Weight of Antigen	~50kDa
Cellular Localization	Cell membrane, Cytoplasm
Species Reactivity	Human, Mouse, Rat
Positive Control	Cerebellum or Pheochromocytoma., HeLa or Y79 cells. Pancreas, HePG2, SH-SY-5Y

*\*Optimal dilution for a specific application should be determined.*

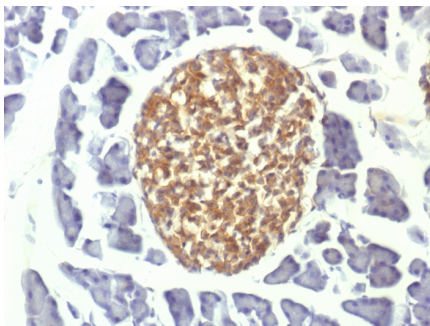
### Product Images for NSE gamma (Neuron Specific Enolase, gamma) (Neuroendocrine Marker) Antibody



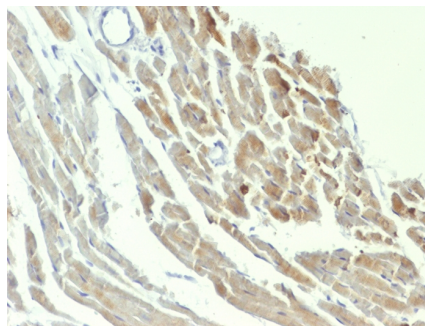
Formalin-fixed, paraffin-embedded human Cerebellum stained with NSEgamma Monoclonal Antibody (ENO2/1375).



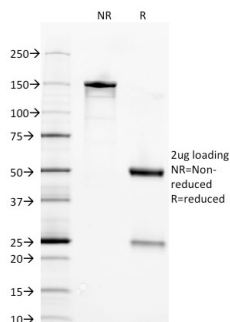
Western Blot of Y79, HeLa and HepG2 cell lysate using NSE, gamma Monoclonal Antibody (ENO2/1375).



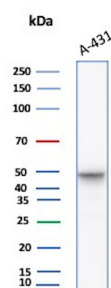
Formalin-fixed, paraffin-embedded Mouse Pancreas stained with NSE gamma Mouse Monoclonal Antibody (ENO2/1375).



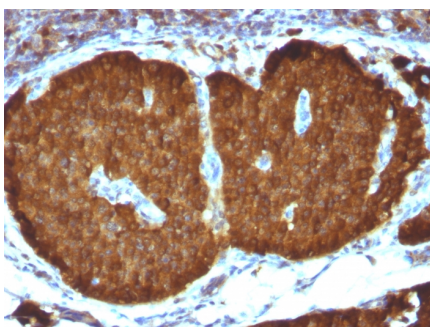
Formalin-fixed, paraffin-embedded Rat Heart stained with NSE gamma Mouse Monoclonal Antibody (ENO2/1375).



SDS-PAGE Analysis Purified NSE gamma Mouse Monoclonal Antibody (ENO2/1375). Confirmation of Integrity and Purity of Antibody.



Western Blot of A-431 cell lysate using NSE, gamma Monoclonal Antibody (ENO2/1375).



Formalin-fixed, paraffin-embedded human Pheochromocytoma stained with NSE gamma Monoclonal Antibody (ENO2/1375).

### Specificity & Comments

Recognizes a protein of about 50kDa, which is identified as gamma-enolase. Three isoenzymes of enolases are identified, alpha, beta and gamma. Alpha-isoform is expressed in most tissues, whereas beta-form is expressed predominantly in muscle tissue whereas gamma-enolase is found only in nervous tissue. These isoforms exist as both homodimers and heterodimers, and they play a role in converting phosphoglyceric acid to phosphoenolpyruvic acid in the glycolytic pathway. NSE-gamma is a useful marker to identify peripheral nerves and tumors of neuro-endocrine origins, such as pheochromocytomas. It is usually employed in combination with other markers such as Synaptophysin, Chromogranin A, and Neurofilament.

### Limitations and Warranty

This antibody is available for research use only and is not approved for use in diagnosis. There are no warranties, expressed or implied, which extend beyond this description. Company is not liable for any personal injury or economic loss resulting from this product.

### Supplied As

200ug/ml of Ab Purified from Bioreactor Concentrate by Protein A/G. Prepared in 10mM PBS with 0.05% BSA & 0.05% azide. Also available WITHOUT BSA & azide at 1.0mg/ml.

### Storage and Stability

Antibody with azide - store at 2 to 8°C. Antibody without azide - store at -20 to -80°C. Antibody is stable for 24 months. Non-hazardous. No MSDS required.

### Research Areas

Cardiovascular, Mast Cell Marker, Neuroscience