

## Endoglin / CD105 (Angiogenesis Marker) Antibody

Mouse Monoclonal Antibody [Clone ENG/1326]

Catalog No	Format	Size
2022-MSM1-P0	Purified Ab with BSA and Azide at 200ug/ml	20 ug
2022-MSM1-P1	Purified Ab with BSA and Azide at 200ug/ml	100 ug
2022-MSM1-P1ABX	Purified Ab WITHOUT BSA at 1.0mg/ml	100 ug

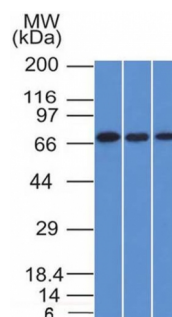
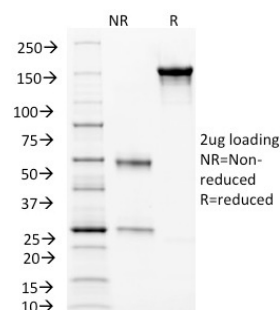
Applications	Tested Dillution	Note
Flow Cytometry (Flow)	1-2ug/million cells	
Immunofluorescence (IF)	1-3ug/ml	
Western Blot (WB)	2-4ug/ml	

### Product Details

<b>Clone</b>	ENG/1326
<b>Gene Name</b>	ENG
<b>Immunogen</b>	Recombinant human Endoglin protein fragment (aa74-251)
<b>Host</b>	Mouse
<b>Clonality</b>	Monoclonal
<b>Isotype / Light Chain</b>	IgG1 / Kappa
<b>Mol. Weight of Antigen</b>	84kDa
<b>Cellular Localization</b>	Cell membrane
<b>Species Reactivity</b>	Human
<b>Positive Control</b>	A431 and HL-60 cells., HeLa

*\*Optimal dilution for a specific application should be determined.*

### Product Images for Endoglin / CD105 (Angiogenesis Marker) Antibody



SDS-PAGE Analysis of Purified Endoglin / CD105 Monoclonal Antibody (ENG/1326). Confirmation of Integrity and Purity of Antibody

Western Blot of HeLa, A431 and HL-60 cell lysates with Endoglin / CD105 Monoclonal Antibody (ENG/1326).

### Specificity & Comments

CD105/Endoglin is a Type I membrane glycoprotein located on cell surfaces and is part of the TGF-beta receptor complex. This protein has been found on endothelial cells, activated macrophages, fibroblasts, and smooth-muscle cells. Endoglin has a role in the development of the cardiovascular system and in vascular remodeling. Its expression is regulated during heart development. CD105 is highly expressed in endothelial cells during tumor angiogenesis and inflammation, with weak or negative expression in vascular endothelium of normal tissues. Angiogenesis is a promising prognostic marker in a variety of tumors. Endoglin is a more specific and sensitive marker for tumor angiogenesis than CD31 or CD34, as it labels only newly-formed blood vessels and may serve as a prognostic marker for Prostate Adenocarcinoma, and cancers of the lung, stomach, breast, and brain.

---

### Limitations and Warranty

This antibody is available for research use only and is not approved for use in diagnosis. There are no warranties, expressed or implied, which extend beyond this description. Company is not liable for any personal injury or economic loss resulting from this product.

---

### Supplied As

200ug/ml of Ab purified from Bioreactor Concentrate by Protein A/G. Prepared in 10mM PBS with 0.05% BSA & 0.05% azide. Also available WITHOUT BSA & azide at 1.0mg/ml.

---

### Storage and Stability

Antibody with azide - store at 2 to 8°C. Antibody without azide - store at -20 to -80°C. Antibody is stable for 24 months. Non-hazardous. No MSDS required.

---

### Research Areas

Cardiovascular, Angiogenesis, Endothelial Cell Marker, Hematopoietic Stem Cells, Mesenchymal Stem Cell Differentiation

---