

## Recombinant EGFR (L858R Mutant Specific) Antibody

Rabbit Monoclonal Antibody [Clone GFR/4564R]

Catalog No	Format	Size
1956-RBM24-P0	Purified Ab with BSA and Azide at 200ug/ml	20 ug
1956-RBM24-P1	Purified Ab with BSA and Azide at 200ug/ml	100 ug
1956-RBM24-P1ABX	Purified Ab WITHOUT BSA and Azide at 1.0mg/ml	100 ug

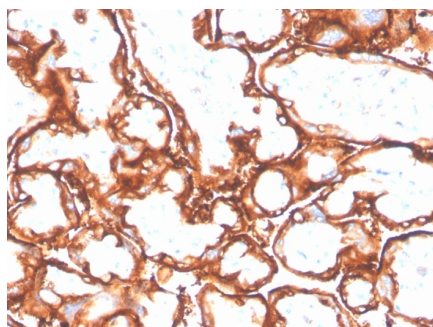
Applications	Tested Dillution	Note
Immunohistochemistry (IHC)	1-2ug/ml	30 min at RT. Staining of formalin-fixed tissues requires heating tissue sections in 10mM Tris with 1mM EDTA, pH 9.0, for 45 min at 95°C followed by cooling at RT for 20 minutes

### Product Details

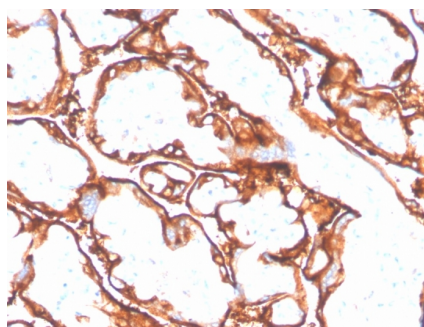
<b>Clone</b>	GFR/4564R
<b>Gene Name</b>	EGFR
<b>Immunogen</b>	synthetic peptide corresponding to EGFR residues within aa800-900 of EGF receptor (mutated L858R)
<b>Host</b>	Rabbit
<b>Clonality</b>	Monoclonal
<b>Isotype / Light Chain</b>	IgG / Kappa
<b>Mol. Weight of Antigen</b>	134kDa
<b>Cellular Localization</b>	Cell membrane, Endoplasmic reticulum membrane, Endosome, Endosome membrane, Golgi apparatus membrane, Nucleus, Nucleus membrane, Secreted
<b>Species Reactivity</b>	Human
<b>Positive Control</b>	A431 cells. Human placenta, Breast, colon or bladder carcinoma tissue.

\*Optimal dilution for a specific application should be determined.

### Product Images for Recombinant EGFR (L858R Mutant Specific) Antibody



Formalin-fixed, paraffin-embedded human placenta stained with EGFR (L858R) Recombinant Rabbit Monoclonal Antibody (GFR/4564R).



Formalin-fixed, paraffin-embedded human placenta stained with EGFR (L858R) Recombinant Rabbit Monoclonal Antibody (GFR/4564R).

### Specificity & Comments

Receptor tyrosine kinase binding ligands of the EGF family and activating several signaling cascades to convert extracellular cues into appropriate cellular responses. Known ligands include EGF, TGFA/TGF-alpha, amphiregulin, epigen/EPGN, BTC/betacellulin, epiregulin/EREG and HBEGF/heparin-binding EGF. Ligand binding triggers receptor homo- and/or heterodimerization and autophosphorylation on key cytoplasmic residues. The phosphorylated receptor recruits adapter proteins like GRB2 which in turn activates complex downstream signaling cascades. Activates at least 4 major downstream signaling cascades including the RAS-RAF-MEK-ERK, PI3 kinase-AKT, PLCgamma-PKC and STATs modules. May also activate the NF-kappa-B signaling cascade. Also directly phosphorylates other proteins like RGS16, activating its GTPase activity and probably coupling the EGF receptor signaling to the G protein-coupled receptor signaling. Also phosphorylates MUC1 and increases its interaction with SRC and CTNNB1/beta-catenin. Plays a role in enhancing learning and memory performance (By similarity). The antibody is specific expressed on EGFR(L858R) mutated lung cancer.

---

### Limitations and Warranty

This antibody is available for research use only and is not approved for use in diagnosis. There are no warranties, expressed or implied, which extend beyond this description. Company is not liable for any personal injury or economic loss resulting from this product.

---

### Supplied As

200ug/ml of Ab purified from Bioreactor Concentrate by Protein A/G. Prepared in 10mM PBS with 0.05% BSA & 0.05% azide. Also available WITHOUT BSA & azide at 1mg/ml.

---

### Storage and Stability

Antibody with azide - store at 2 to 8 °C. Antibody without azide - store at -20 to -80 °C. Antibody is stable for 24 months. Non-hazardous. No MSDS required.

---

### Research Areas

AKT Signaling, Bladder Cancer, Breast Cancer, Cardiovascular, Colon Cancer, Developmental Biology, Infectious Disease, MAPK Signaling, Signal Transduction, Transcription Factors

---