

## EGFR (Epidermal Growth Factor Receptor) Antibody

Mouse Monoclonal Antibody [Clone SPM341]

Catalog No	Format	Size
1956-MSM11X-P0	Purified Ab with BSA and Azide at 200ug/ml	20 ug
1956-MSM11X-P1	Purified Ab with BSA and Azide at 200ug/ml	100 ug
1956-MSM11X-P1ABX	Purified Ab WITHOUT BSA and Azide at 1.0mg/ml	100 ug

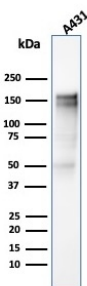
Applications	Tested Dillution	Note
Flow Cytometry (Flow)	1-2ug/million cells	
Immunofluorescence (IF)	1-3ug/ml	
Immunohistochemistry (IHC)	1-2ug/ml	30 min at RT. Staining of formalin-fixed tissues requires heating tissue sections in 10mM Tris with 1mM EDTA, pH 9.0, for 45 min at 95°C followed by cooling at RT for 20 minutes
Western Blot (WB)	2-4ug/ml	

### Product Details

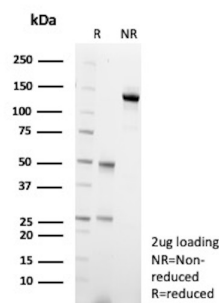
<b>Clone</b>	SPM341
<b>Gene Name</b>	EGFR
<b>Immunogen</b>	Recombinant fragment of human EGFR protein (around aa 344-492) (exact sequence is proprietary)
<b>Host</b>	Mouse
<b>Clonality</b>	Monoclonal
<b>Isotype / Light Chain</b>	IgG2b / Kappa
<b>Mol. Weight of Antigen</b>	~170kDa (wild type) and ~145kDa (VIII variant)
<b>Cellular Localization</b>	Cell membrane, Endoplasmic reticulum membrane, Endosome, Endosome membrane, Golgi apparatus membrane, Nucleus, Nucleus membrane, Secreted
<b>Species Reactivity</b>	Human
<b>Positive Control</b>	A431 cells. Placenta, Breast, Colon or Bladder cancer.

\*Optimal dilution for a specific application should be determined.

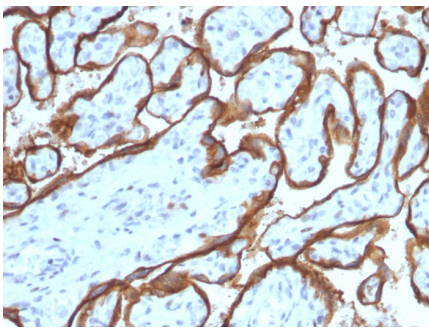
### Product Images for EGFR (Epidermal Growth Factor Receptor) Antibody



Western Blot Analysis of A431 cell lysate using EGFR Mouse Monoclonal Antibody (SPM341).



SDS-PAGE Analysis of Purified EGFR Mouse Monoclonal Antibody (SPM341). Confirmation of Purity and Integrity of Antibody.



Formalin-fixed, paraffin-embedded human Placenta stained with EGFR Mouse Monoclonal Antibody (SPM341).

---

### Specificity & Comments

This MAb recognizes a protein of 170kDa, identified as EGFR. EGFR is type I receptor tyrosine kinase with sequence homology to erbB-1, -2, -3 -4 or HER-1, -2, -3 -4. It binds to Epidermal Growth Factor (EGF), Transforming Growth Factor- $\alpha$  (TGF- $\alpha$ ), Heparin-binding EGF (HB-EGF), amphiregulin, betacellulin and epiregulin. EGFR is overexpressed in tumors of breast, brain, bladder, lung, gastric, head neck, esophagus, cervix, vulva, ovary, and endometrium. It is predominantly present in squamous cell carcinomas.

---

### Supplied As

200ug/ml of Ab Purified from Bioreactor Concentrate by Protein A/G. Prepared in 10mM PBS with 0.05% BSA & 0.05% azide. Also available WITHOUT BSA & azide at 1mg/ml.

---

### Storage and Stability

Antibody with azide - store at 2 to 8°C. Antibody without azide - store at -20 to -80°C. Antibody is stable for 24 months. Non-hazardous. No MSDS required.

---

### Research Areas

AKT Signaling, Bladder Cancer, Breast Cancer, Cardiovascular, Colon Cancer, Developmental Biology, Infectious Disease, MAPK Signaling, Signal Transduction, Transcription Factors

---

### Limitations and Warranty

This antibody is available for research use only and is not approved for use in diagnosis. There are no warranties, expressed or implied, which extend beyond this description. Company is not liable for any personal injury or economic loss resulting from this product.

---