

IgA Secretory Component / ECM1 Antibody

Mouse Monoclonal Antibody [Clone SPM217]

Catalog No	Format	Size
1893-MSM1X-P0	Purified Ab with BSA and Azide at 200ug/ml	20 ug
1893-MSM1X-P1	Purified Ab with BSA and Azide at 200ug/ml	100 ug
1893-MSM1X-P1ABX	Purified Ab WITHOUT BSA and Azide at 1.0mg/ml	100 ug

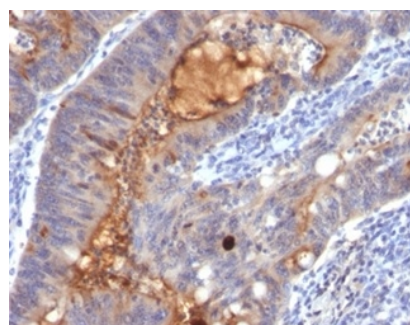
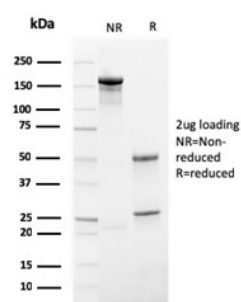
Applications	Tested Dillution	Note
Flow Cytometry (Flow)	1-2ug/million cells	
Immunofluorescence (IF)	1-3ug/ml	
Immunohistochemistry (IHC)	1-2ug/ml	30 min at RT. Staining of formalin-fixed tissues requires heating tissue sections in 10mM Tris with 1mM EDTA, pH 9.0, for 45 min at 95°C followed by cooling at RT for 20 minutes

Product Details

Clone	SPM217
Gene Name	ECM1
Immunogen	Secretory Component protein isolated from human colostrum
Host	Mouse
Clonality	Monoclonal
Isotype / Light Chain	IgG1 / Kappa
Mol. Weight of Antigen	~80kDa
Cellular Localization	Extracellular matrix, Extracellular space, Secreted
Species Reactivity	Human, Rat
Positive Control	Human stomach, Lung, or Breast tumor.

*Optimal dilution for a specific application should be determined.

Product Images for IgA Secretory Component / ECM1 Antibody



SDS-PAGE Analysis of Purified Secretory Component Mouse Monoclonal Antibody (SPM217). Confirmation of Purity and Integrity of Antibody.

Formalin-fixed, paraffin-embedded human colon carcinoma stained with Secretory Component Mouse Monoclonal Antibody (SPM217).

Specificity & Comments

This MAb reacts with a reduction-resistant epitope present in both free and SIgA bound Secretory Component. It does not react with the cell lines lacking secretory component. The antibody is useful for studying the distribution and level of both free and bound secretory component. Secretory component is differentially expressed in epithelium, and the antibody is a popular marker for identifying subpopulations of epithelial cells and epithelial differentiation. The Secretory component antibody is a useful research tool for studying mucosal immunity, inflammation, remodeling, differentiation and tumorigenesis, all processes associated with differential secretory component expression.

Limitations and Warranty

This antibody is available for research use only and is not approved for use in diagnosis. There are no warranties, expressed or implied, which extend beyond this description. Company is not liable for any personal injury or economic loss resulting from this product.

Supplied As

200ug/ml of Ab purified from Bioreactor Concentrate by Protein A/G. Prepared in 10mM PBS with 0.05% BSA & 0.05% azide. Also available WITHOUT BSA & azide at 1.0mg/ml.

Storage and Stability

Antibody with azide - store at 2 to 8 °C. Antibody without azide - store at -20 to -80 °C. Antibody is stable for 24 months. Non-hazardous. No MSDS required.

Research Areas

Cardiovascular
