

IDO2 / Indoleamine 2,3-dioxygenase 2 Antibody

Mouse Monoclonal Antibody [Clone IDO2/2640]

| Catalog No | Format | Size |
|-------------------|---|--------|
| 169355-MSM3-P0 | Purified Ab with BSA and Azide at 200ug/ml | 20 ug |
| 169355-MSM3-P1 | Purified Ab with BSA and Azide at 200ug/ml | 100 ug |
| 169355-MSM3-P1ABX | Purified Ab WITHOUT BSA and Azide at 1.0mg/ml | 100 ug |

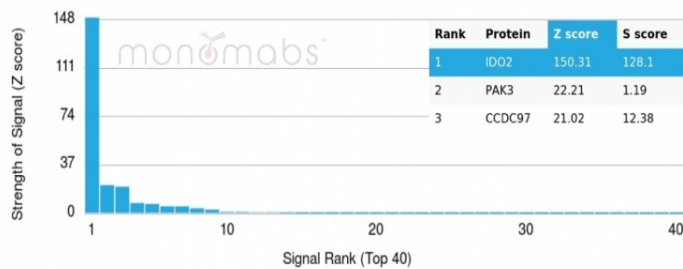
| Applications | Tested Dillution | Note |
|----------------------------|------------------|---|
| Immunohistochemistry (IHC) | 1-2ug/ml | 30 min at RT. Staining of formalin-fixed tissues requires heating tissue sections in 10mM Tris with 1mM EDTA, pH 9.0, for 45 min at 95°C followed by cooling at RT for 20 minutes |

Product Details

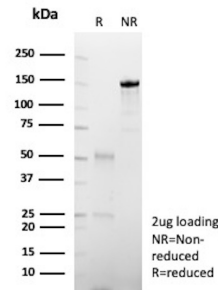
| | |
|------------------------|--|
| Clone | IDO2/2640 |
| Gene Name | IDO2 |
| Immunogen | Recombinant fragment (around aa 200-350) of human IDO2 protein (exact sequence is proprietary) |
| Host | Mouse |
| Clonality | Monoclonal |
| Isotype / Light Chain | IgG / Kappa |
| Mol. Weight of Antigen | 47kDa |
| Species Reactivity | Human |
| Positive Control | Human placenta or liver. |

*Optimal dilution for a specific application should be determined.

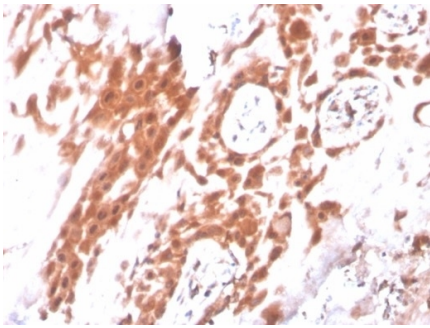
Product Images for IDO2 / Indoleamine 2,3-dioxygenase 2 Antibody



HIER: Tris/EDTA, pH9.0, 45min. 2°C: HRP-polymer, 30min. DAB, 5min.



SDS-PAGE Analysis of Purified Indoleamine 2,3-dioxygenase 2 Mouse Monoclonal Antibody (IDO2/2640). Confirmation of Purity and Integrity of Antibody.



IHC analysis of formalin-fixed, paraffin-embedded human placenta. Staining using IDO2/2640 at 2ug/ml in PBS for 30min RT.

Specificity & Comments

IDO2 is a presumptive immunomodulatory gene based on its close structural relationship to IDO1 and its expression in a variety of antigen-presenting cell types. Both IDO1 and IDO2 will catabolize tryptophan to kynurenine. Biochemical studies indicate that both enzymes are similarly robust in catabolic activity, although the in vitro conditions required for IDO2 to manifest the same level of activity differ somewhat from IDO1. However, whether IDO2 is active as a tryptophan catabolizing enzyme in human dendritic cells has been disputed. Further work is needed to conclusively determine that IDO1 and IDO2 are similar in their preference for substrates and reaction pathways to generate product. A non-redundant function for IDO2 relative to IDO1 is suggested by their rather distinct expression patterns and response to extracellular stimuli.

Limitations and Warranty

This antibody is available for research use only and is not approved for use in diagnosis. There are no warranties, expressed or implied, which extend beyond this description. Company is not liable for any personal injury or economic loss resulting from this product.

Supplied As

200ug/ml of Ab purified from Bioreactor Concentrate by Protein A/G. Prepared in 10mM PBS with 0.05% BSA & 0.05% azide. Also available WITHOUT BSA & azide at 1.0mg/ml.

Storage and Stability

Antibody with azide store at 2 to 8 °C. Antibody without azide store at -20 to -80 °C. Antibody is stable for 24 months. Non-hazardous. No MSDS required.
