

IDO2 / Indoleamine 2,3-dioxygenase 2 Antibody

Mouse Monoclonal Antibody [Clone IDO2/2638]

Catalog No	Format	Size
169355-MSM1-P0	Purified Ab with BSA and Azide at 200ug/ml	20 ug
169355-MSM1-P1	Purified Ab with BSA and Azide at 200ug/ml	100 ug
169355-MSM1-P1ABX	Purified Ab WITHOUT BSA and Azide at 1.0mg/ml	100 ug

Applications	Tested Dillution	Note
Immunohistochemistry (IHC)	1-2ug/ml	30 min at RT. Staining of formalin-fixed tissues requires heating tissue sections in 10mM Tris with 1mM EDTA, pH 9.0, for 45 min at 95°C followed by cooling at RT for 20 minutes
Western Blot (WB)	2-4ug/ml	

Product Details

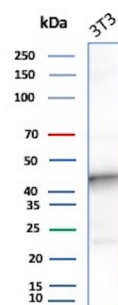
Clone	IDO2/2638
Gene Name	IDO2
Immunogen	Recombinant fragment (around aa 200-350) of human IDO2 protein (exact sequence is proprietary)
Host	Mouse
Clonality	Monoclonal
Isotype / Light Chain	IgG / Kappa
Mol. Weight of Antigen	47kDa
Species Reactivity	Human
Positive Control	Human placenta or liver. 3T3 cells

*Optimal dilution for a specific application should be determined.

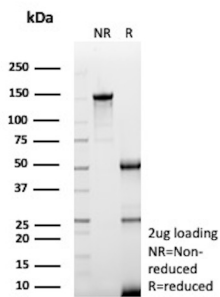
Product Images for IDO2 / Indoleamine 2,3-dioxygenase 2 Antibody



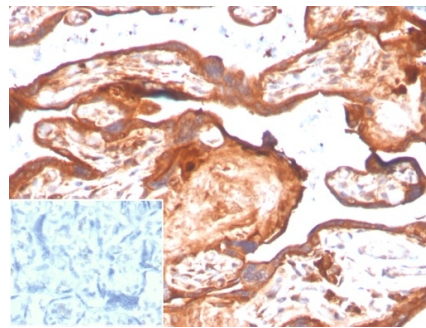
Inset: PBS instead of primary antibody; secondary only negative control.



Western Blot Analysis of 3T3 lysate using IDO2 Mouse Monoclonal Antibody (IDO2/2638).



SDS-PAGE Analysis of Purified Indoleamine 2,3-dioxygenase 2 Mouse Monoclonal Antibody (IDO2/2638). Confirmation of Purity and Integrity of Antibody.



IHC analysis of formalin-fixed, paraffin-embedded human placenta. Staining using IDO2/2638 at 2ug/ml in PBS for 30min RT.

Specificity & Comments

IDO2 is a presumptive immunomodulatory gene based on its close structural relationship to IDO1 and its expression in a variety of antigen-presenting cell types. Both IDO1 and IDO2 will catabolize tryptophan to kynurenine. Biochemical studies indicate that both enzymes are similarly robust in catabolic activity, although the in vitro conditions required for IDO2 to manifest the same level of activity differ somewhat from IDO1. However, whether IDO2 is active as a tryptophan catabolizing enzyme in human dendritic cells has been disputed. Further work is needed to conclusively determine that IDO1 and IDO2 are similar in their preference for substrates and reaction pathways to generate product. A non-redundant function for IDO2 relative to IDO1 is suggested by their rather distinct expression patterns and response to extracellular stimuli.

Limitations and Warranty

This antibody is available for research use only and is not approved for use in diagnosis. There are no warranties, expressed or implied, which extend beyond this description. Company is not liable for any personal injury or economic loss resulting from this product.

Supplied As

200ug/ml of Ab purified from Bioreactor Concentrate by Protein A/G. Prepared in 10mM PBS with 0.05% BSA & 0.05% azide. Also available WITHOUT BSA & azide at 1.0mg/ml.

Storage and Stability

Antibody with azide store at 2 to 8 °C. Antibody without azide store at -20 to -80 °C. Antibody is stable for 24 months. Non-hazardous. No MSDS required.