

## Angiotensin I Converting Enzyme (ACE) / CD143 Antibody

Mouse Monoclonal Antibody [Clone ACE/3764]

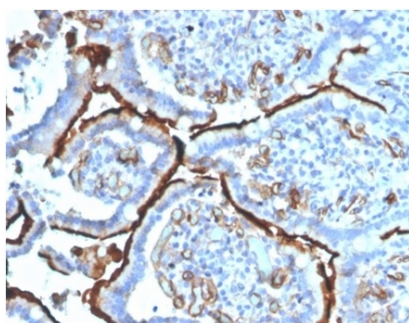
Catalog No	Format	Size
1636-MSM4-P0	Purified Ab with BSA and Azide	200ug/ml
1636-MSM4-P1	Purified Ab with BSA and Azide	200ug/ml
1636-MSM4-P1ABX	Purified Ab WITHOUT BSA and Azide	1.0mg/ml

Applications	Tested Dillution
Immunohistochemistry (IHC)	1-2ug/ml

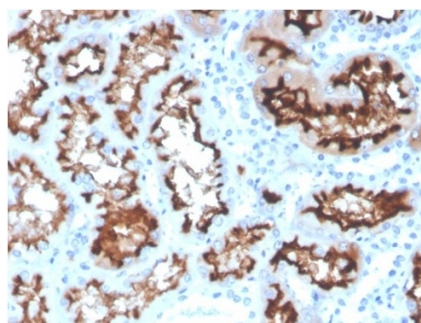
Product Details	
Clone	ACE/3764
Gene Name	ACE
Immunogen	Full-length recombinant human ACE/CD143 protein
Host	Mouse
Clonality	Monoclonal
Isotype / Light Chain	IgG1 / Kappa
Mol. Weight of Antigen	150kDa
Cellular Localization	Cell membrane, Cytoplasm, Secreted
Species Reactivity	Human
Positive Control	gastrointestinal system and prostate., Heart, Kidney, Ubiquitously expressed, with highest levels in lung

*\*Optimal dilution for a specific application should be determined.*

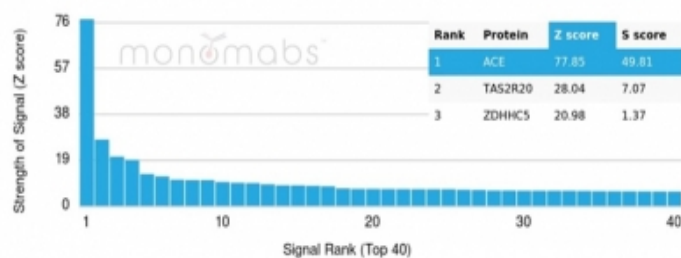
### Product Images for Angiotensin I Converting Enzyme (ACE) / CD143 Antibody



IHC analysis of formalin-fixed, paraffin-embedded human colon carcinoma. Staining using ACE/3764 at 2ug/ml in PBS for 30min RT. HIER: Tris/EDTA, pH9.0, 45min. 2 °: HRP-polymer, 30min. DAB, 5min.



IHC analysis of formalin-fixed, paraffin-embedded human colon carcinoma. Staining using ACE/3764 at 2ug/ml in PBS for 30min RT. HIER: Tris/EDTA, pH9.0, 45min. 2°C: HRP-polymer, 30min. DAB, 5min.



Analysis of Protein Array containing more than 19,000 full-length human proteins using ACE / CD143-Monospecific Mouse Monoclonal Antibody (ACE/3764). Z- and S- Score: The Z-score represents the strength of a signal that a monoclonal antibody (MAb) (in combination with a fluorescently-tagged anti-IgG secondary antibody) produces when binding to a particular protein on the HuProt™ array. Z-scores are described in units of standard deviations (SD's) above the mean value of all signals generated on that array. If targets on HuProt™ are arranged in descending order of the Z-score, the S-score is the difference (also in units of SD's) between the Z-score. S-score therefore represents the relative target specificity of a MAb to its intended target. A MAb is considered to be specific to its intended target, if the MAb has an S-score of at least 2.5. For example, if a MAb binds to protein X with a Z-score of 43 and to protein Y with a Z-score of 14, then the S-score for the binding of that MAb to protein X is equal to 29.

### Specificity & Comments

This gene encodes an enzyme involved in catalyzing the conversion of angiotensin I into a physiologically active peptide angiotensin II. Angiotensin II is a potent vasopressor and aldosterone-stimulating peptide that controls blood pressure and fluid-electrolyte balance. This enzyme plays a key role in the renin-angiotensin system. Many studies have associated the presence or absence of a 287 bp Alu repeat element in this gene with the levels of circulating enzyme or cardiovascular pathophysiologies. Two most abundant alternatively spliced variants of this gene encode two isozymes - the somatic form and the testicular form that are equally active. Multiple additional alternatively spliced variants have been identified but their full length nature has not been determined.

### Research Areas

Cardiovascular, Endothelial Cell Marker

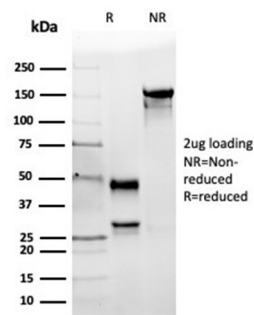
### Known Applications & Suggested Dilutions

ELISA (For coating, order antibody without BSA) | Immunohistochemistry (Formalin-fixed) (1-2ug/ml for 30 minutes at RT), (Staining of formalin-fixed tissues requires heating tissue sections in 10mM Tris with 1mM EDTA, pH 9.0, for 45 min at 95 °C followed by cooling at RT for 20 minutes), Optimal dilution for a specific application should be determined.

### Limitations and Warranty

This antibody is available for research use only and is not approved for use in diagnosis.

There are no warranties, expressed or implied, which extend beyond this description. Company is not liable for any personal injury or economic loss resulting from this product.



SDS-PAGE Analysis of Purified ACE / CD143 Mouse Monoclonal Antibody (ACE/3764). Confirmation of Integrity and Purity of Antibody.

### Supplied As

200ug/ml of Ab purified from Bioreactor Concentrate by Protein A/G. Prepared in 10mM PBS with 0.05% BSA & 0.05% azide. Also available WITHOUT BSA & azide at 1.0mg/ml.

### Storage and Stability

Antibody with azide - store at 2 to 8 °C. Antibody without azide - store at -20 to -80 °C. Antibody is stable for 24 months. Non-hazardous. No MSDS required.