

## Cytochrome P450 1A1/1A2 Antibody

Mouse Monoclonal Antibody [Clone MC1]

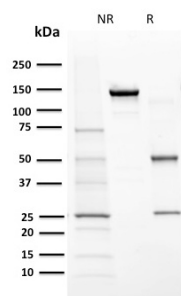
Catalog No	Format	Size
1543-MSM1-P0	Purified Ab with BSA and Azide at 200ug/ml	20 ug
1543-MSM1-P1	Purified Ab with BSA and Azide at 200ug/ml	100 ug
1543-MSM1-P1ABX	Purified Ab WITHOUT BSA and Azide at 1.0mg/ml	100 ug

Applications	Tested Dillution	Note
Immunofluorescence (IF)	1-3ug/ml	
Immunohistochemistry (IHC)	1-2ug/ml	30 min at RT. Staining of formalin-fixed tissues requires heating tissue sections in 10mM Tris with 1mM EDTA, pH 9.0, for 45 min at 95°C followed by cooling at RT for 20 minutes
Western Blot (WB)	2-4ug/ml	

Product Details	
Clone	MC1
Gene Name	CYP1A1
Immunogen	3-methylcholanthrene induced rat cytochrome P450 protein.
Host	Mouse
Clonality	Monoclonal
Isotype / Light Chain	IgG1 / Kappa
Mol. Weight of Antigen	58kDa
Cellular Localization	Cytoplasm, Endoplasmic reticulum membrane, Microsome membrane, Mitochondrion inner membrane
Species Reactivity	Human, Mouse, Primate, Rat
Positive Control	HeLa cells. Liver or Cardiac muscle.

\*Optimal dilution for a specific application should be determined.

### Product Images for Cytochrome P450 1A1/1A2 Antibody



SDS-PAGE Analysis of Purified Cytochrome P450 1A1/1A2 Mouse Monoclonal Antibody (MC1). Confirmation of Purity and Integrity of Antibody.

### Specificity & Comments

Cytochrome P450 oxidase (commonly abbreviated CYP) is a generic term for a large number of related, but distinct, oxidative enzymes important in vertebrate physiology. The cytochrome P450 mixed-function monooxygenase system is probably the most important element of Phase I metabolism in mammals. P450s are membrane-bound, either in the inner membrane of mitochondria or in the endoplasmic reticulum of cells where they metabolize thousands of endogenous and exogenous compounds. In the liver, these substrates include toxins, drugs, and other unneeded and potentially harmful molecules. Humans have 18 families of cytochrome P450 genes and 43 subfamilies; the CYP1 family is involved in drug metabolism and includes 3 subfamilies, 3 genes and 1 pseudogene.

### Supplied As

200ug/ml of Ab Purified from Bioreactor Concentrate by Protein A/G. Prepared in 10mM PBS with 0.05% BSA & 0.05% azide. Also available WITHOUT BSA & azide at 1.0mg/ml.

### Storage and Stability

Antibody with azide - store at 2 to 8°C. Antibody without azide - store at -20 to -80°C. Antibody is stable for 24 months. Non-hazardous. No MSDS required.

### Limitations and Warranty

This antibody is available for research use only and is not approved for use in diagnosis. There are no warranties, expressed or implied, which extend beyond this description. Company is not liable for any personal injury or economic loss resulting from this product.

---