

Catenin, beta (p120) Antibody

Mouse Monoclonal Antibody [Clone 6F9]

Catalog No	Format	Size
1499-MSM5-P0	Purified Ab with BSA and Azide at 200ug/ml	20 ug
1499-MSM5-P1	Purified Ab with BSA and Azide at 200ug/ml	100 ug
1499-MSM5-P1ABX	Purified Ab WITHOUT BSA at 1.0mg/ml	100 ug

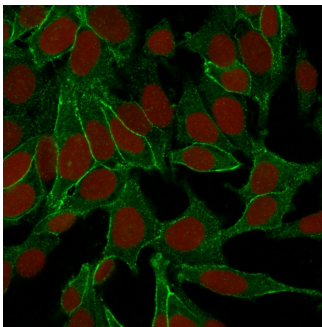
Applications	Tested Dillution	Note
Flow Cytometry (Flow)	1-2ug/million cells	
Immunofluorescence (IF)	1-3ug/ml	
Immunohistochemistry (IHC)	1-2ug/ml	30 min at RT. Staining of formalin-fixed tissues requires heating tissue sections in 10mM Tris with 1mM EDTA, pH 9.0, for 45 min at 95°C followed by cooling at RT for 20 minutes
Western Blot (WB)	2-4ug/ml	

Product Details

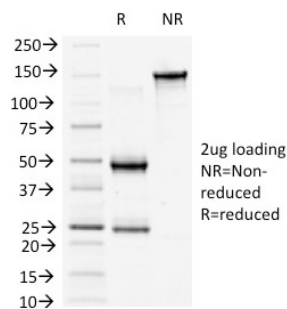
Clone	6F9
Gene Name	CTNNB1
Immunogen	Recombinant chicken β -catenin
Host	Mouse
Clonality	Monoclonal
Isotype / Light Chain	IgG1 / Kappa
Mol. Weight of Antigen	92kDa
Cellular Localization	Adherens junction, Cell junction, Cell membrane, Centrosome, Cilium basal body, Cytoplasm, Cytoskeleton, Microtubule organizing center, Nucleus, Spindle pole, Synapse
Species Reactivity	Chicken, Cow, Dog, Human
Positive Control	HeLa or MCF-7 cells. Breast carcinoma.

*Optimal dilution for a specific application should be determined.

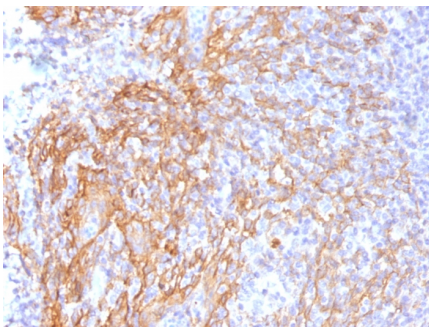
Product Images for Catenin, beta (p120) Antibody



Confocal immunofluorescence image of HeLa cells using Beta-Catenin (p120) Monoclonal Antibody (6F9). Green (CF488) and Reddot is used to label the nuclei.



SDS-PAGE Analysis of Purified Beta-Catenin (p120) Monoclonal Antibody (6F9). Confirmation of Purity and Integrity of Antibody.



Formalin-fixed, paraffin-embedded human Tonsil stained with Beta-Catenin (p120) Monoclonal Antibody (6F9).

Specificity & Comments

This MAb recognizes a protein of 92kDa, which is identified as beta-catenin. It shows no cross-reaction with gamma-catenin (also known as plakoglobin). The catenins, alpha, beta and gamma bind to the highly conserved, intracellular cytoplasmic tail of E-cadherin. Together, the catenin/cadherin complexes play an important role mediating cellular adhesion. Alpha-catenin was initially described as an E-cadherin-associated protein, and has been shown to associate with other members of the cadherin family, such as N-cadherin and P-cadherin. Beta-catenin associates with the cytoplasmic portion of E-cadherin, which is necessary for the function of E-cadherin as an adhesion molecule. Beta-catenin has also been found in complexes with the tumor suppressor protein APC.

Limitations and Warranty

This antibody is available for research use only and is not approved for use in diagnosis. There are no warranties, expressed or implied, which extend beyond this description. Company is not liable for any personal injury or economic loss resulting from this product.

Supplied As

200ug/ml of Ab Purified from Bioreactor Concentrate by Protein A/G. Prepared in 10mM PBS with 0.05% BSA & 0.05% azide. Also available WITHOUT BSA & azide at 1.0mg/ml.

Storage and Stability

Antibody with azide - store at 2 to 8°C. Antibody without azide - store at -20 to -80°C. Antibody is stable for 24 months. Non-hazardous. No MSDS required.

Research Areas

Apoptosis, Autophagy, Basal Cell Marker, BBB VCAM-1 Signaling, Breast Cancer, Cancer, Cardiovascular, Colon Cancer, Developmental Biology, Immunology, Infectious Disease, Signal Transduction, Transcription Factors