

Catenin, beta (p120) Antibody

Mouse Monoclonal Antibody [Clone 15B8]

Catalog No	Format	Size
1499-MSM3-P0	Purified Ab with BSA and Azide at 200ug/ml	20 ug
1499-MSM3-P1	Purified Ab with BSA and Azide at 200ug/ml	100 ug
1499-MSM3-P1ABX	Purified Ab WITHOUT BSA at 1.0mg/ml	100 ug

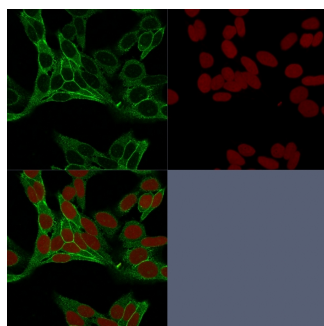
Applications	Tested Dillution	Note
Flow Cytometry (Flow)	1-2ug/million cells	
Immunofluorescence (IF)	1-3ug/ml	
Immunohistochemistry (IHC)	1-2ug/ml	30 min at RT. Staining of formalin-fixed tissues requires heating tissue sections in 10mM Tris with 1mM EDTA, pH 9.0, for 45 min at 95°C followed by cooling at RT for 20 minutes
Western Blot (WB)	2-4ug/ml	

Product Details

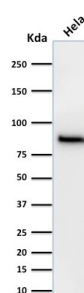
Clone	15B8
Gene Name	CTNNB1
Immunogen	Recombinant chicken γ -catenin
Host	Mouse
Clonality	Monoclonal
Isotype / Light Chain	IgG1 / Kappa
Mol. Weight of Antigen	92kDa
Cellular Localization	Adherens junction, Cell junction, Cell membrane, Centrosome, Cilium basal body, Cytoplasm, Cytoskeleton, Microtubule organizing center, Nucleus, Spindle pole, Synapse
Species Reactivity	Chicken, Cow, Dog, Human, Mouse, Rat
Positive Control	NIH/3T3, HeLa or MCF-7 cells. Human Brain, Breast carcinoma.

*Optimal dilution for a specific application should be determined.

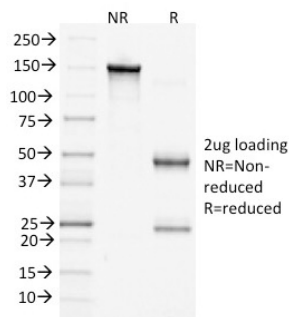
Product Images for Catenin, beta (p120) Antibody



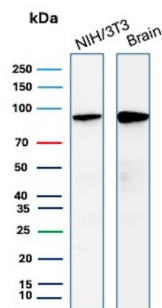
Confocal immunofluorescence image of HeLa cells using Beta-Catenin Mouse Monoclonal Antibody (15B8) labeled is Green (CF488) and Reddot is used to label the nuclei Red.



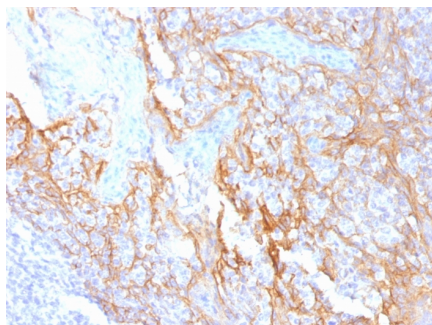
Western Blot Analysis of HeLa cell lysate using Beta-Catenin Mouse Monoclonal Antibody (15B8).



SDS-PAGE Analysis of Purified Beta-Catenin Mouse Monoclonal Antibody (15B8). Confirmation of Purity and Integrity of Antibody.



Western Blot Analysis of NIH/3T3 and human brain lysates using CTNNB1 Mouse Monoclonal Antibody (15B8).



Formalin-fixed, paraffin-embedded human Tonsil stained with Beta-Catenin Mouse Monoclonal Antibody (15B8).

Specificity & Comments

Beta-catenin associates with the cytoplasmic portion of E-cadherin, which is necessary for the function of E-cadherin as an adhesion molecule. In normal tissues, beta-catenin is localized to the membrane of epithelial cells, consistent with its role in the cell adhesion complex. In breast ductal neoplasia, beta-catenin is usually localized in cellular membranes. However, in lobular neoplasia, a marked redistribution of beta-catenin throughout the cytoplasm results in a diffuse cytoplasmic pattern. Immuno-staining of beta-catenin and E-cadherin helps in the accurate identification of ductal and lobular neoplasms, including a distinction between low-grade ductal carcinoma in situ (DCIS) and lobular carcinoma. Additionally, some rectal and gastric adenocarcinomas demonstrate diffuse cytoplasmic beta-catenin staining and a lack of membranous staining, mimicking the staining pattern observed with lobular breast carcinomas.

Limitations and Warranty

This antibody is available for research use only and is not approved for use in diagnosis. There are no warranties, expressed or implied, which extend beyond this description. Company is not liable for any personal injury or economic loss resulting from this product.

Supplied As

200ug/ml of Ab Purified from Bioreactor Concentrate by Protein A/G. Prepared in 10mM PBS with 0.05% BSA & 0.05% azide. Also available WITHOUT BSA & azide at 1.0mg/ml.

Storage and Stability

Antibody with azide - store at 2 to 8°C. Antibody without azide - store at -20 to -80°C. Antibody is stable for 24 months. Non-hazardous. No MSDS required.

Research Areas

Apoptosis, Autophagy, Basal Cell Marker, BBB VCAM-1 Signaling, Breast Cancer, Cancer, Cardiovascular, Colon Cancer, Developmental Biology, Immunology, Infectious Disease, Signal Transduction, Transcription Factors