

Catenin, alpha-1 (CTNNA1) Antibody

Mouse Monoclonal Antibody [Clone 1G5]

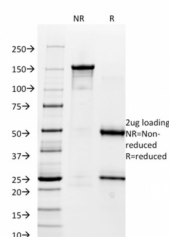
Catalog No	Format	Size
1495-MSM1-P0	Purified Ab with BSA and Azide	200ug/ml
1495-MSM1-P1	Purified Ab with BSA and Azide	200ug/ml
1495-MSM1-P1ABX	Purified Ab WITHOUT BSA and Azide	1.0mg/ml

Applications	Tested Dillution
Flow Cytometry (Flow)	1-2ug/million cells
Immunofluorescence (IF)	1-3ug/ml
Western Blot (WB)	2-4ug/ml

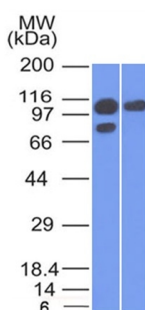
Product Details	
Clone	1G5
Gene Name	CTNNA1
Immunogen	Human alpha catenin fusion protein
Host	Mouse
Clonality	Monoclonal
Isotype / Light Chain	IgG1 / Kappa
Mol. Weight of Antigen	102kDa
Cellular Localization	Adherens junction, Cell junction, Cell membrane, Cytoplasm, Cytoskeleton
Species Reactivity	Human
Positive Control	A431 or MCF-7 cells., HeLa

*Optimal dilution for a specific application should be determined.

Product Images for Catenin, alpha-1 (CTNNA1) Antibody



1364



SDS-PAGE Analysis of Purified Catenin, alpha-1 Mouse Monoclonal Antibody (1G5).

Western Blot of A431 and MCF-7 cell lysate using Catenin, alpha-1 Mouse Monoclonal Antibody (1G5).

Specificity & Comments

Recognizes a protein of 102kDa, identified as Catenin, alpha-1. Catenins comprise a large family of Ca²⁺-dependent, homotypic cell-cell adhesion molecules that play important roles in development, epithelial cell polarity and tumor progression. Alpha-catenin is a key regulator of actin dynamics in cell-cell adhesion. During cell-cell adhesion, -catenin and links the cadherins to actin associated with the cytoskeleton. Alpha-catenin also regulates the beta-catenin signaling in various cells. It displays the tumor suppressor activity and is found to be down regulated in some forms of breast cancer.'

Research Areas

Autophagy, BBB VCAM-1 Signaling, Cardiovascular, Developmental Biology, Ovarian Cancer, Signal Transduction

Known Applications & Suggested Dilutions

Flow Cytometry (1-2ug/million cells) | Immunofluorescence (1-2ug/ml) | Western Blot (1-2ug/ml) | Optimal dilution for a specific application should be determined.

Limitations and Warranty

This antibody is available for research use only and is not approved for use in diagnosis.

There are no warranties, expressed or implied, which extend beyond this description. Company is not liable for any personal injury or economic loss resulting from this product.

Supplied As

200ug/ml of Ab Purified from Bioreactor Concentrate by Protein A/G. Prepared in 10mM PBS with 0.05% BSA & 0.05% azide. Also available WITHOUT BSA & azide at 1.0mg/ml.

Storage and Stability

Antibody with azide - store at 2 to 8°C. Antibody without azide - store at -20 to -80°C. Antibody is stable for 24 months. Non-hazardous. No MSDS required.
