

CTLA4 / CD152 (Negative Regulator of T-Cells) Antibody

Mouse Monoclonal Antibody [Clone L4P2F5.F10]

Catalog No	Format	Size
1493-MSM1-P0	Purified Ab with BSA and Azide at 200ug/ml	20 ug
1493-MSM1-P1	Purified Ab with BSA and Azide at 200ug/ml	100 ug
1493-MSM1-P1ABX	Purified Ab WITHOUT BSA and Azide at 1.0mg/ml	100 ug

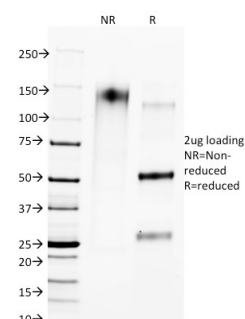
Applications	Tested Dillution	Note
Flow Cytometry (Flow)	1-2ug/million cells	
Immunofluorescence (IF)	1-3ug/ml	
Western Blot (WB)	2-4ug/ml	

Product Details

Clone	L4P2F5.F10
Gene Name	CTLA-4
Immunogen	A synthetic peptide from CTLA4 (exact sequence is proprietary)
Host	Mouse
Clonality	Monoclonal
Isotype / Light Chain	IgG1 / Kappa
Mol. Weight of Antigen	30-43kDa
Cellular Localization	Cell membrane
Species Reactivity	Cat, Cow, Mouse, Rat
Positive Control	Jurkat or Raji cells. Lymph node or tonsil.

**Optimal dilution for a specific application should be determined.*

Product Images for CTLA4 / CD152 (Negative Regulator of T-Cells) Antibody



SDS-PAGE Analysis of Purified CTLA4 Mouse Monoclonal Antibody (L4P2F5.F10).
Confirmation of Purity and Integrity of Antibody.

Specificity & Comments

CTLA4 (CD152) is a cell surface receptor that behaves as a negative regulator of the proliferation and the effector function of T cells. It contains a V domain, a transmembrane domain, and a cytoplasmic tail. Alternate transcriptional splice variants, encoding different isoforms, have been characterized. The membrane-bound isoform functions as a homodimer interconnected by a disulfide bond, while the soluble isoform functions as a monomer. Mutations in this gene have been associated with insulin-dependent diabetes mellitus, Graves disease, Hashimoto thyroiditis, celiac disease, systemic lupus erythematosus, thyroid-associated orbitopathy, and other autoimmune diseases. The novel finding that CTLA-4 molecule is expressed and functional on human tumor cells opens up the possibility of antitumor therapeutic intervention based on targeting this molecule.

Supplied As

200ug/ml of Ab purified from Bioreactor Concentrate by Protein A/G. Prepared in 10mM PBS with 0.05% BSA & 0.05% azide. Also available WITHOUT BSA & azide at 1.0mg/ml.

Storage and Stability

Antibody with azide - store at 2 to 8 °C. Antibody without azide - store at -20 to -80 °C. Antibody is stable for 24 months. Non-hazardous. No MSDS required.

Research Areas

Cardiovascular, Immunology, CTLA-4 blockade immunotherapy, Transcription Factors

Limitations and Warranty

This antibody is available for research use only and is not approved for use in diagnosis. There are no warranties, expressed or implied, which extend beyond this description. Company is not liable for any personal injury or economic loss resulting from this product.
