

## Cystatin B (Marker of Epithelial Ovarian Cancer Progression) Antibody

Mouse Monoclonal Antibody [Clone CPTC-CSTB-3]

Catalog No	Format	Size
1476-MSM1-P0	Purified Ab with BSA and Azide at 200ug/ml	20 ug
1476-MSM1-P1	Purified Ab with BSA and Azide at 200ug/ml	100 ug
1476-MSM1-P1ABX	Purified Ab WITHOUT BSA and Azide at 1.0mg/ml	100 ug

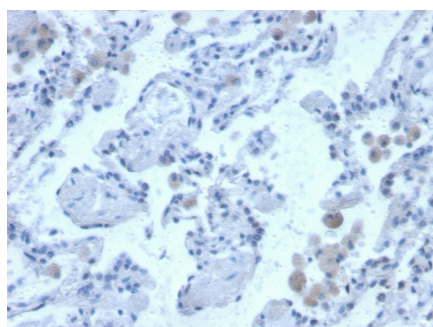
Applications	Tested Dillution	Note
Immunohistochemistry (IHC)	1-2ug/ml	30 min at RT. Staining of formalin-fixed tissues requires heating tissue sections in 10mM Tris with 1mM EDTA, pH 9.0, for 45 min at 95°C followed by cooling at RT for 20 minutes
Western Blot (WB)	2-4ug/ml	

### Product Details

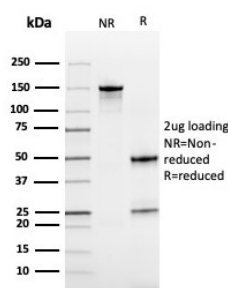
<b>Clone</b>	CPTC-CSTB-3
<b>Gene Name</b>	CSTB
<b>Immunogen</b>	Recombinant full-length human Cystatin B protein
<b>Host</b>	Mouse
<b>Clonality</b>	Monoclonal
<b>Isotype / Light Chain</b>	IgG1 / Kappa
<b>Mol. Weight of Antigen</b>	12kDa
<b>Cellular Localization</b>	Cytoplasm, Nucleus
<b>Species Reactivity</b>	Human
<b>Positive Control</b>	HEK293T or U-87 MG cells. Human tonsil.

\*Optimal dilution for a specific application should be determined.

### Product Images for Cystatin B (Marker of Epithelial Ovarian Cancer Progression) Antibody



Formalin-fixed, paraffin-embedded human lung stained with Cystatin B Mouse Monoclonal Antibody (CPTC-CSTB-3).



SDS-PAGE Analysis of Purified Cystatin B Mouse Monoclonal Antibody (CPTC-CSTB-3). Confirmation of Purity and Integrity of Antibody.

### Specificity & Comments

Cystatin A (also designated STF1, STFA, stefin A or cystatin AS) and cystatin B (also designated PME, CST6, STFB, CPI-B, stefin B and liver thiol proteinase inhibitor) are thiol protease inhibitors that form complexes with papain and the cathepsins B, H, and L. cystatin A, a cytoplasmic protein, is one of the precursor proteins of the cornified cell envelope in keratinocytes and plays a role in epidermal development and maintenance. cystatin B protects against intracellular proteases leaking out of lysosomes and is primarily expressed in heart, liver and kidney.

### Supplied As

200ug/ml of Ab purified from Bioreactor Concentrate by Protein A/G. Prepared in 10mM PBS with 0.05% BSA & 0.05% azide. Also available WITHOUT BSA & azide at 1.0mg/ml.

### Storage and Stability

Antibody with azide - store at 2 to 8°C. Antibody without azide - store at -20 to -80°C. Antibody is stable for 24 months. Non-hazardous. No MSDS required.

### Research Areas

Cardiovascular, Immunology

## Limitations and Warranty

This antibody is available for research use only and is not approved for use in diagnosis. There are no warranties, expressed or implied, which extend beyond this description. Company is not liable for any personal injury or economic loss resulting from this product.

---