

## ATF2 Antibody

Mouse Monoclonal Antibody [Clone PCR-P-ATF2-1B4]

Catalog No	Format	Size
1386-MSM2-P0	Purified Ab with BSA and Azide at 200ug/ml	20 ug
1386-MSM2-P1	Purified Ab with BSA and Azide at 200ug/ml	100 ug
1386-MSM2-P1ABX	Purified Ab WITHOUT BSA and Azide at 1.0mg/ml	100 ug

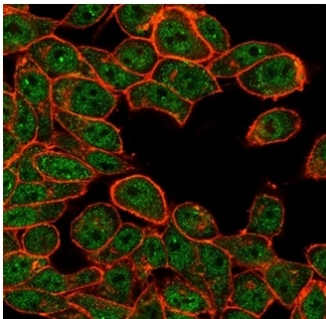
Applications	Tested Dillution	Note
Flow Cytometry (Flow)	1-2ug/million cells	
Immunofluorescence (IF)	1-3ug/ml	
Western Blot (WB)	2-4ug/ml	

### Product Details

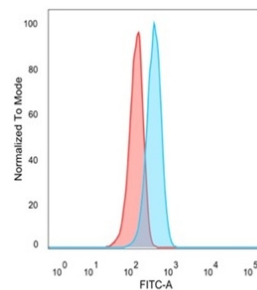
<b>Clone</b>	PCR-P-ATF2-1B4
<b>Gene Name</b>	ATF2
<b>Immunogen</b>	Recombinant full-length human ATF2 protein
<b>Host</b>	Mouse
<b>Clonality</b>	Monoclonal
<b>Isotype / Light Chain</b>	IgG2b
<b>Mol. Weight of Antigen</b>	54.5kDa
<b>Cellular Localization</b>	Cytoplasm, Mitochondrion outer membrane, Nucleus
<b>Species Reactivity</b>	Human
<b>Positive Control</b>	HeLa or U87 cells.

\*Optimal dilution for a specific application should be determined.

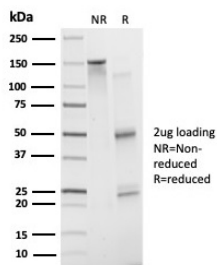
### Product Images for ATF2 Antibody



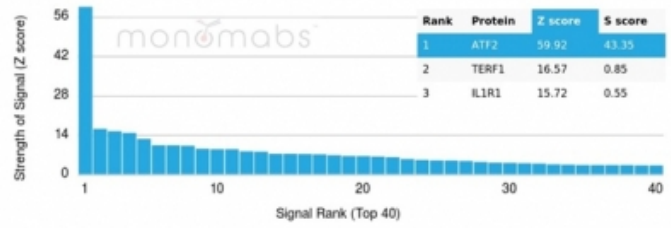
Immunofluorescence Analysis of HeLa cells stained using ATF2 Mouse Monoclonal Antibody (PCR-P-ATF2-1B4) followed by goat anti-mouse IgG-CF488 (green). CF640A phalloidin (red).



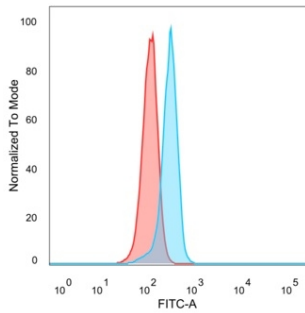
Immunofluorescence Analysis of HeLa cells stained using ATF2 Mouse Monoclonal Antibody (PCR-P-ATF2-1B4) followed by goat anti-mouse IgG-CF488 (green). CF640A phalloidin (red).



SDS-PAGE Analysis. Purified ATF2 Mouse Monoclonal Antibody (PCRP-ATF2-1B4). Confirmation of Integrity and Purity of Antibody.



Flow Cytometric Analysis of PFA-fixed U87cells. ATF2 Mouse Monoclonal Antibody (PCRP-ATF2-1B4) followed bygoat anti-mouse IgG-CF488 (blue); unstained cells (red).



Flow Cytometric Analysis of PFA-fixed HeLacells. ATF2 Mouse Monoclonal Antibody (PCRP-ATF2-1B4) followed bygoat anti-mouse IgG-CF488 (blue); unstained cells (red).

### Specificity & Comments

This gene encodes a transcription factor that is a member of the leucine zipper family of DNA binding proteins. The encoded protein has been identified as a moonlighting protein based on its ability to perform mechanistically distinct functions This protein binds to the cAMP-responsive element (CRE), an octameric palindrome. It forms a homodimer or a heterodimer with c-Jun and stimulates CRE-dependent transcription. This protein is also a histone acetyltransferase (HAT) that specifically acetylates histones H2B and H4 in vitro; thus it may represent a class of sequence-specific factors that activate transcription by direct effects on chromatin components. The encoded protein may also be involved in cell's DNA damage response independent of its role in transcriptional regulation. Several alternatively spliced transcript variants have been found for this gene.

### Limitations and Warranty

This antibody is available for research use only and is not approved for use in diagnosis. There are no warranties, expressed or implied, which extend beyond this description. Company is not liable for any personal injury or economic loss resulting from this product.

### Supplied As

200ug/ml of Ab purified from Bioreactor Concentrate by Protein A/G. Prepared in 10mM PBS with 0.05% BSA & 0.05% azide. Also available WITHOUT BSA & azide at 1.0mg/ml.

### Storage and Stability

Antibody with azide - store at 2 to 8 °C. Antibody without azide - store at -20 to -80 °C. Antibody is stable for 24 months. Non-hazardous. No MSDS required.

### Research Areas

Cardiovascular, Cytokine Signaling, Immunology, MAPK Signaling, Nuclear Marker, Signal Transduction, Stem Cell Differentiation, Transcription Factors