

## Recombinant CD35 / CR1 (Follicular Dendritic Cell Marker) Antibody

Rabbit Monoclonal Antibody [Clone CR1/7016R]

Catalog No	Format	Size
1378-RBM17-P0	Purified Ab with BSA and Azide at 200ug/ml	20 ug
1378-RBM17-P1	Purified Ab with BSA and Azide at 200ug/ml	100 ug
1378-RBM17-P1ABX	Purified Ab WITHOUT BSA and Azide at 1.0mg/ml	100 ug

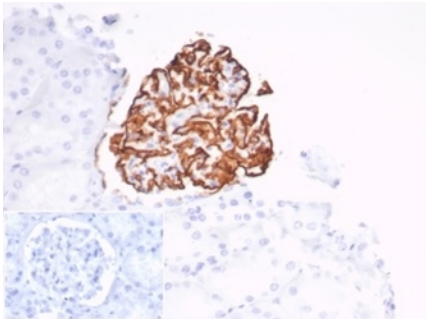
Applications	Tested Dillution	Note
Immunohistochemistry (IHC)	1-2ug/ml	30 min at RT. Staining of formalin-fixed tissues requires heating tissue sections in 10mM Tris with 1mM EDTA, pH 9.0, for 45 min at 95°C followed by cooling at RT for 20 minutes

### Product Details

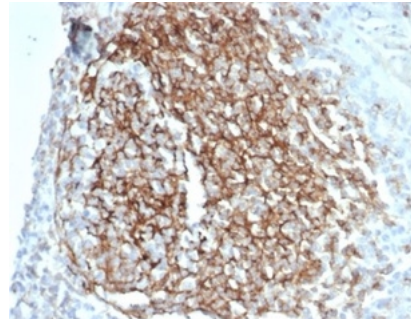
<b>Clone</b>	CR1/7016R
<b>Gene Name</b>	CR1
<b>Immunogen</b>	Recombinant full-length human CR1 protein
<b>Host</b>	Rabbit
<b>Clonality</b>	Monoclonal
<b>Isotype / Light Chain</b>	IgG / Kappa
<b>Mol. Weight of Antigen</b>	224kDa
<b>Cellular Localization</b>	Membrane
<b>Species Reactivity</b>	Human
<b>Positive Control</b>	Follicular dendritic cells (FDC) in tonsil.

\*Optimal dilution for a specific application should be determined.

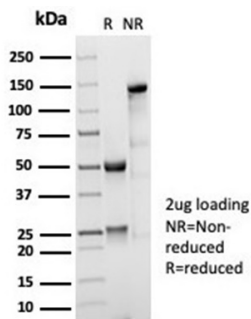
### Product Images for Recombinant CD35 / CR1 (Follicular Dendritic Cell Marker) Antibody



Formalin-fixed, paraffin-embedded human kidney stained with CD35 Recombinant Rabbit Monoclonal Antibody (CD35/7016R) at 2ug/ml. Inset: PBS instead of primary antibody; secondary only negative control.



Formalin-fixed, paraffin-embedded human kidney stained with CD35 Recombinant Rabbit Monoclonal Antibody (CD35/7016R) at 2ug/ml. HIER: Tris/EDTA, pH9.0, 45min. 2°C: HRP-polymer, 30min. DAB, 5min.



SDS-PAGE Analysis of Purified CD35 Recombinant Rabbit Monoclonal Antibody (CD35/7016R). Confirmation of Purity and Integrity of Antibody.

### Specificity & Comments

CD35, complement receptor 1, is a cell membrane-bound, monomeric glycoprotein on numerous cell types including erythrocytes, leukocytes, glomerular podocytes, and follicular dendritic cells. The primary function of CD35 is to serve as the cellular receptor for C3b and C4b, the most important components of the complement system leading to clearance of foreign macromolecules. CD35 antigen is found on erythrocytes, B cells, a subset of T cells, monocytes, as well as eosinophils, and neutrophils. Anti-CD35 is considered a mature B-cell marker which labels follicular dendritic reticulum cells and tumors derived from such cells such as follicular dendritic cell tumor/sarcoma.

### Limitations and Warranty

This antibody is available for research use only and is not approved for use in diagnosis. There are no warranties, expressed or implied, which extend beyond this description. Company is not liable for any personal injury or economic loss resulting from this product.

### Supplied As

200ug/ml of Ab purified from Bioreactor Concentrate by Protein A/G. Prepared in 10mM PBS with 0.05% BSA & 0.05% azide. Also available WITHOUT BSA & azide at 1.0mg/ml.

### Storage and Stability

Antibody with azide - store at 2 to 8 °C. Antibody without azide - store at -20 to -80 °C. Antibody is stable for 24 months. Non-hazardous. No MSDS required.

### Research Areas

Complement System, Immunology, Transcription Factors