

## CD35 / CR1 (Follicular Dendritic Cell Marker) Antibody

Mouse Monoclonal Antibody [Clone CR1/802]

Catalog No	Format	Size
1378-MSM2-P0	Purified Ab with BSA and Azide at 200ug/ml	20 ug
1378-MSM2-P1	Purified Ab with BSA and Azide at 200ug/ml	100 ug
1378-MSM2-P1ABX	Purified Ab WITHOUT BSA and Azide at 1.0mg/ml	100 ug

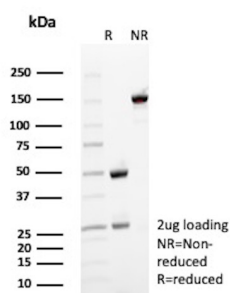
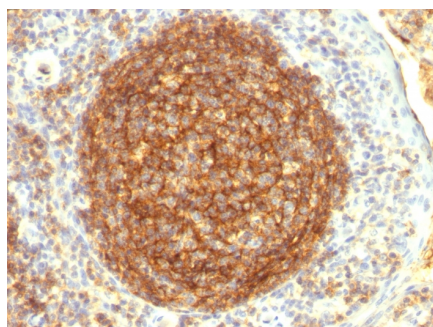
Applications	Tested Dillution	Note
Flow Cytometry (Flow)	1-2ug/million cells	
Immunofluorescence (IF)	1-3ug/ml	
Immunohistochemistry (IHC)	1-2ug/ml	30 min at RT. Staining of formalin-fixed tissues requires heating tissue sections in 10mM Tris with 1mM EDTA, pH 9.0, for 45 min at 95°C followed by cooling at RT for 20 minutes

### Product Details

Clone	CR1/802
Gene Name	CR1
Immunogen	Recombinant full-length human CR1 protein
Host	Mouse
Clonality	Monoclonal
Isotype / Light Chain	IgG1 / Kappa
Mol. Weight of Antigen	210-220kDa
Cellular Localization	Membrane
Species Reactivity	Baboon, Human, Monkey
Positive Control	Follicular dendritic cells (FDC) in tonsil.

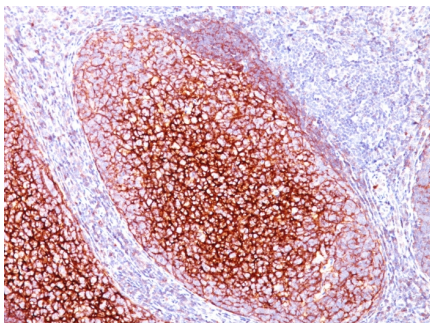
*\*Optimal dilution for a specific application should be determined.*

### Product Images for CD35 / CR1 (Follicular Dendritic Cell Marker) Antibody



Formalin-fixed, paraffin-embedded human Tonsil stained with CD35 Mouse Monoclonal Antibody (CR1/802).

SDS-PAGE Analysis of Purified CD35 Mouse Monoclonal Antibody (CR1/802). Confirmation of Purity and Integrity of Antibody.



Formalin-fixed, paraffin-embedded human Tonsil stained with CD35 Mouse Monoclonal Antibody (CR1/802).

---

### Specificity & Comments

Recognizes a protein of 210-220kDa, which is identified as the complement receptor 1 (CR1)/CD35. This MAb does not block CR1 activity. It is highly specific to CR1 and shows no cross-reaction with CR2. The primary function of CR1 is to serve as the cellular receptor for C3b and C4b, the most important components of the complement system leading to clearance of foreign macromolecules. The Knops blood group system is a system of antigens located on this protein. Follicular dendritic cells (FDC) are restricted to the B-cell regions of secondary lymphoid follicles. They are CD21+/CD35+/CD1a-. This MAb labels follicular dendritic cells and follicular dendritic cell sarcoma.

---

### Limitations and Warranty

This antibody is available for research use only and is not approved for use in diagnosis. There are no warranties, expressed or implied, which extend beyond this description. Company is not liable for any personal injury or economic loss resulting from this product.

---

### Supplied As

200ug/ml of Ab Purified from Bioreactor Concentrate by Protein A/G. Prepared in 10mM PBS with 0.05% BSA & 0.05% azide. Also available WITHOUT BSA & azide at 1.0mg/ml.

---

### Storage and Stability

Antibody with azide - store at 2 to 8°C. Antibody without azide - store at -20 to -80°C. Antibody is stable for 24 months. Non-hazardous. No MSDS required.

---

### Research Areas

Immunology, Complement System, Transcription Factors

---