

Collagen VII Antibody

Mouse Monoclonal Antibody [Clone LH7.2]

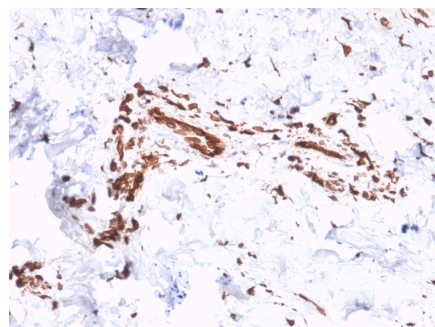
Catalog No	Format	Size
1294-MSM1-P0	Purified Ab with BSA and Azide	200ug/ml
1294-MSM1-P1	Purified Ab with BSA and Azide	200ug/ml
1294-MSM1-P1ABX	Purified Ab WITHOUT BSA and Azide	1.0mg/ml

Applications	Tested Dillution
Flow Cytometry (Flow)	1-2ug/million cells
Immunofluorescence (IF)	1-3ug/ml
Immunohistochemistry (IHC)	1-2ug/ml
Western Blot (WB)	2-4ug/ml

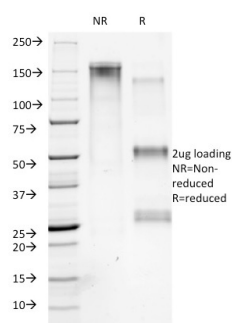
Product Details	
Clone	LH7.2
Gene Name	COL7A1
Immunogen	Recombinant full-length human Collagen VII protein
Host	Mouse
Clonality	Monoclonal
Isotype / Light Chain	IgG1 / Kappa
Mol. Weight of Antigen	290kDa
Cellular Localization	Basement membrane, Extracellular matrix, Extracellular space, Secreted
Species Reactivity	Cow, Goat, Guinea Pig, Horse, Human, Sheep
Positive Control	cells. Human lymphocytes. Human lymph node or tonsil., HeLa

**Optimal dilution for a specific application should be determined.*

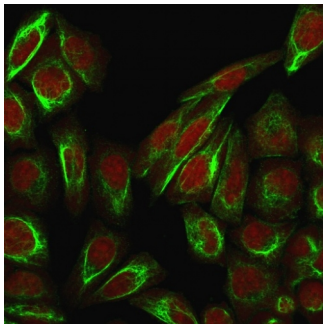
Product Images for Collagen VII Antibody



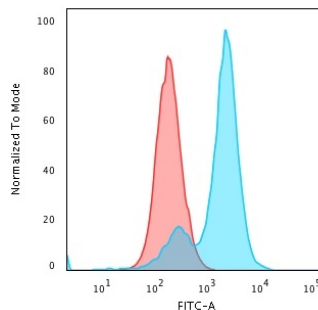
Formalin-fixed, paraffin-embedded human Skin stained with Collagen VII Mouse Monoclonal Antibody (LH7.2).



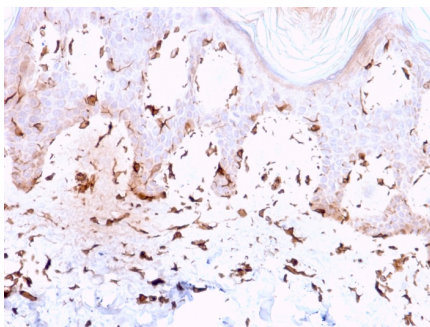
SDS-PAGE Analysis of Purified Collagen VII Mouse Monoclonal Antibody (LH7.2). Confirmation of Purity and Integrity of Antibody.



Immunofluorescence Analysis of PFA-fixed HeLa cells labeling Collagen VII using Collagen VII Mouse Monoclonal Antibody (LH7.2) followed by goat anti-mouse IgG-CF488 (Green). The nuclear counterstain is RedDot.



Flow Cytometric Analysis of PFA-fixed HeLa cells using Collagen VII Mouse Monoclonal Antibody (LH7.2) followed by goat anti-mouse IgG-CF488 (Blue); Isotype Control (Red).



Formalin-fixed, paraffin-embedded human Skin stained with Collagen VII Mouse Monoclonal Antibody (LH7.2).

Specificity & Comments

Recognizes an epitope located on collagenase digested Type VII collagen (150kDa), i.e. the non-helical carboxyl terminal region of the dimer. Binding is localized at the inferior border of the lamina densa as demonstrated by immunoelectron microscopy. Type VII is also found in the retina, where its function is unknown. It interacts with Laminin 5 and Fibronectin. Collagen VII is a stratified squamous epithelial basement membrane protein that forms anchoring fibrils which may contribute to epithelial basement membrane organization and adherence by interacting with extracellular matrix (ECM) proteins such as type IV collagen.

Research Areas

Cardiovascular

Known Applications & Suggested Dilutions

ELISA (For coating, order antibody without BSA) | Western Blot (1-2ug/ml) | Flow Cytometry (1-2ug/million cells) | Immunofluorescence (1-2ug/ml) | Immunohistochemistry (Formalin-fixed) (1-2ug/ml for 30 minutes at RT) (Staining of formalin-fixed tissues requires heating tissue sections in 10mM Tris with 1mM EDTA, pH 9.0, for 45 min at 95°C followed by cooling at RT for 20 minutes) | Optimal dilution for a specific application should be determined.

Limitations and Warranty

This antibody is available for research use only and is not approved for use in diagnosis.

There are no warranties, expressed or implied, which extend beyond this description. Company is not liable for any personal injury or economic loss resulting from this product.

Supplied As

200ug/ml of Ab Purified from Bioreactor Concentrate by Protein A/G. Prepared in 10mM PBS with 0.05% BSA & 0.05% azide. Also available WITHOUT BSA & azide at 1.0mg/ml.

Storage and Stability

Antibody with azide - store at 2 to 8°C. Antibody without azide - store at -20 to -80°C. Antibody is stable for 24 months. Non-hazardous. No MSDS required.