

## Recombinant Adipophilin / Perilipin-2 (Marker of Lipid Accumulation) Antibody

Rabbit Monoclonal Antibody [Clone ADFP/2755R]

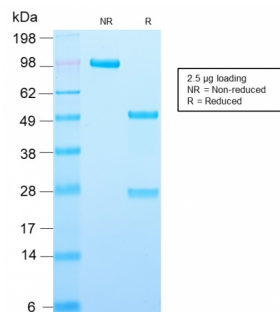
Catalog No	Format	Size
123-RBM5-P0	Purified Ab with BSA and Azide	200ug/ml
123-RBM5-P1	Purified Ab with BSA and Azide	200ug/ml
123-RBM5-P1ABX	Purified Ab WITHOUT BSA and Azide	1.0mg/ml

Applications	Tested Dillution
Immunohistochemistry (IHC)	1-2ug/ml
Western Blot (WB)	2-4ug/ml

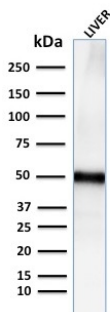
Product Details	
Clone	ADFP/2755R
Gene Name	PLIN2
Immunogen	Recombinant fragment (around aa 249-376) of human Adipophilin (ADFP) protein (exact sequence is proprietary)
Host	Rabbit
Clonality	Monoclonal
Isotype / Light Chain	IgG / Kappa
Mol. Weight of Antigen	48kDa
Cellular Localization	Lipid droplet, Membrane
Species Reactivity	Human
Positive Control	Adrenal gland or Cerebellum., HepG2 or JAR cells. Liver

\*Optimal dilution for a specific application should be determined.

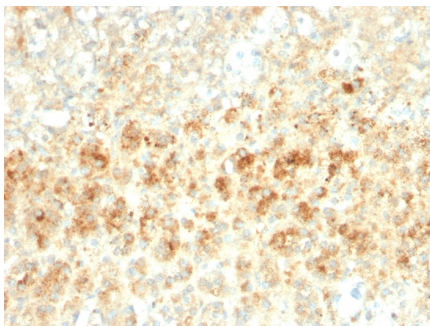
### Product Images for Recombinant Adipophilin / Perilipin-2 (Marker of Lipid Accumulation) Antibody



SDS-PAGE Analysis of Purified Adipophilin Recombinant Rabbit Monoclonal Antibody (ADFP/2755R). Confirmation of Integrity and Purity of Antibody.



Western Blot Analysis for human Liver tissue lysate using Adipophilin Recombinant Rabbit Monoclonal Antibody (ADFP/2755R).



Formalin-fixed, paraffin-embedded human Adrenal Gland stained with Adipophilin Recombinant Rabbit Monoclonal Antibody (ADFP/2755R).

### Specificity & Comments

Recognizes a protein of 48kDa, which is identified as Adipophilin. It belongs to the perilipin family, members of which coat intracellular lipid storage droplets. This protein is associated with the lipid globule surface membrane material, and maybe involved in development and maintenance of adipose tissue. However, it is not restricted to adipocytes as previously thought, but is found in a wide range of cultured cell lines, including fibroblasts, endothelial and epithelial cells, and tissues, such as lactating mammary gland, adrenal cortex, Sertoli and Leydig cells, and hepatocytes in alcoholic liver cirrhosis, suggesting that it may serve as a marker of lipid accumulation in diverse cell types and diseases.

### Research Areas

Cardiovascular

### Known Applications & Suggested Dilutions

ELISA (For coating, order Ab without BSA) | Western Blot (1-2ug/ml) | Immunohistochemistry (Formalin-fixed) (1-2ug/ml for 30 minutes at RT) (Staining of formalin-fixed tissues requires heating tissue sections in 10mM Tris with 1mM EDTA, pH 9.0, for 45 min at 95&degC followed by cooling at RT for 20 minutes) | Optimal dilution for a specific application should be determined.

### Limitations and Warranty

This antibody is available for research use only and is not approved for use in diagnosis.

There are no warranties, expressed or implied, which extend beyond this description. Company is not liable for any personal injury or economic loss resulting from this product.

### Supplied As

200ug/ml of Ab Purified from Bioreactor Concentrate by Protein A/G. Prepared in 10mM PBS with 0.05% BSA & 0.05% azide. Also available WITHOUT BSA & azide at 1.0mg/ml.

### Storage and Stability

Antibody with azide - store at 2 to 8°C. Antibody without azide - store at -20 to -80°C. Antibody is stable for 24 months. Non-hazardous. No MSDS required.